

POLYCLONAL ANTIBODY

For research use only. Not for clinical diagnosis.

Catalog No. SU-IZ-P02

Anti human IL-32

BACKGROUND

Anti-IL-32 antibody is a rabbit polyclonal antibody which obtained from the immunization with purified, E. coli-derived, recombinant human IL-32. This antibody can be used for the detection of IL-32 by immunoblotting and flow cytometry.

| | |
|---------------------|--|
| Product type | Primary antibodies |
| Host | Rabbit |
| Source | Serum |
| Form | Liquid. Serum with 0.05% NaN ₃ as a preservative. |
| Volume | 100 μ l |
| Specificity | IL-32 |
| Antigen | Recombinant human IL-32 (correspond to exons 7 to 8) expressed by E. coli. |

Application notes

WB,FC

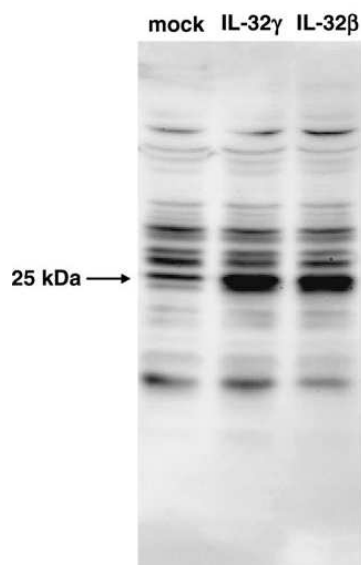
Recommended dilutions

Western blotting, 1/100 to 1/1,000

FC, 1/100 to 1/1,000

Optimal dilutions/concentrations should be determined by the end user.

Staining Pattern



Cell lysates were prepared from mock- or IL-32- or IL-32 β -transfected HEK293T cells, and then western blot analysis was performed using anti-IL-32 serum.



COSMO BIO Co., LTD.
Inspiration for Life Science

| | |
|-------------------------|---|
| Cross reactivity | Human |
| Storage | Store below -20°C (below -70°C for prolonged storage). Aliquot to avoid cycles of freeze/thaw. |
| References | 1) Goda, C et al., Int. Immunol. 18:233-240, 2006 |

For research use only. Not for clinical diagnosis.



COSMO BIO Co., LTD.
Inspiration for Life Science

TOYO 2CHOME, KOTO-KU, TOKYO, 135-0016, JAPAN

URL: <http://www.cosmobio.co.jp>

e-mail: export@cosmobio.co.jp

[Outside Japan] Phone : +81-3-5632-9617

[国内連絡先] Phone : +81-3-5632-9610

FAX : +81-3-5632-9618

FAX : +81-3-5632-9619