



POLYCLONAL ANTIBODY

For research use only. Not for clinical diagnosis.

Catalog No. SK-T01-003

Anti-hASH1

Product type	Primary antibodies
Host	Rabbit
Source	Serum
Form	Liquid
Volume	100 µl
Concentration	
Specificity	This Ab reacts with mouse ASH1 (MASH-1). This Ab does not react with other bHLH family proteins such as hash-2, E47, Hes-1, Hes-5, Id-3, neurogenin-1, neurogenin-2 and neurogenin-3.
Antigen	Recombinant human ASH1 (full length)
Isotype	IgG

Application notes WB, IHC, IP
Recommended use

Recommended dilutions

Western blotting: 1/5,000 to 1/8000

Predicted molecular weight: 28 kDa

Immunohistochemistry: 1/5,000 to 1/10,000

Immunoprecipitation: 1 µl

Optimal dilutions/concentrations should be determined by the end user.

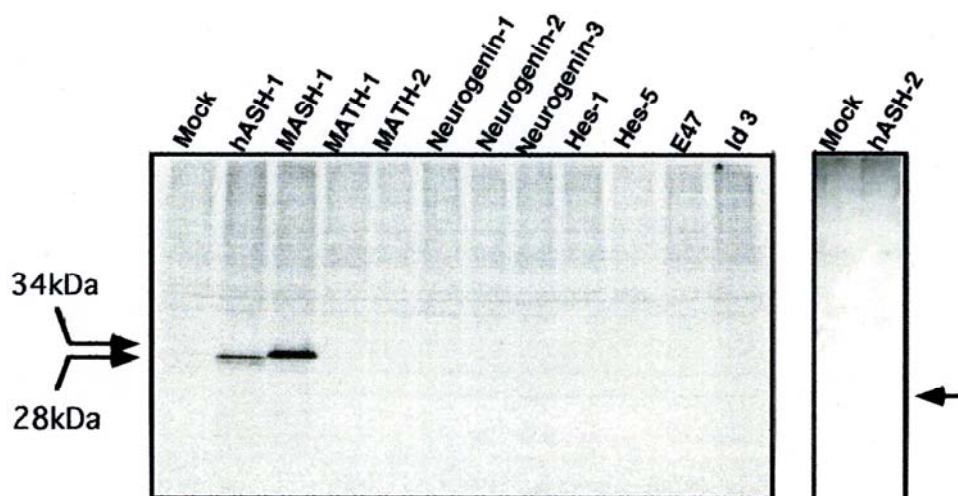
Staining Pattern

Cross reactivity Human, Mouse

Storage Store below -20°C (below -70°C for prolonged storage).

Aliquot to avoid cycles of freeze/thaw.

References 1) Yoshida et al. (2001) Proprotein convertase PACE4 is down-regulated by the basic helix-loop-helix transcription factor hash-1 and MASH-1. Biochem. J. 360, 683-689



For research use only. Not for clinical diagnosis.



COSMO BIO Co., LTD.

Inspiration for Life Science

TOYO 2CHOME, KOTO-KU, TOKYO, 135-0016, JAPAN

URL: <http://www.cosmobio.co.jp>

e-mail: export@cosmobio.co.jp

[Outside Japan] Phone : +81-3-5632-9617

[国内連絡先] Phone : +81-3-5632-9610

FAX : +81-3-5632-9618

FAX : +81-3-5632-9619