



MONOCLONAL ANTIBODY

For research use only, Not for diagnostic use.

Catalog No. SHI-EXO-M04

Anti CD91 (LRP1) [Clone : B3-3E11]

BACKGROUND

Low-density lipoprotein (LDL) receptor-related protein-(LRP1, CD91)¹ as a high-affinity endocytic receptor for myelin-associated glycoprotein (MAG)², that binds ligands and exhibits signaling properties³, and known to play roles in areas as diverse as lipoprotein metabolism, degradation of proteases, activation of lysosomal enzymes and cellular entry of bacterial toxins and viruses⁴.

Cargo transport by members of the LDL receptor family appears to be intimately coupled to the regulation of cellular physiology⁵. CD91 (LRP1) has been shown to be potential exosomal marker of NSCLC (Non-Small Cell Lung Cancer)⁶, its expression is associated with improved lung cancer outcomes⁷, and its agonists promote regeneration after spinal cord injury⁸.

Product type	Primary antibody
Immunogen	Human CD91 extracellular region -FLAG-rabbit Fc
Raised in	Mouse
Myeloma	-
Clone number	B3-3E11
Isotype	IgG1 κ
Source	Culture supernatant
Purification	Affinity purified by Protein G
Buffer	Phosphate buffered saline, 0.1%NaN ₃
Concentration	1 mg/mL
Volume	100 μ L
Label	Unlabeled
Specificity	Human CD91
Cross reactivity	Human. Other species are not tested.
Storage	Store below - 40°C Aliquot to avoid cycles of freeze/thaw.

Application notes	• Western blotting: 1/500 (2 μ g/mL, non-reductive condition)
Recommended dilutions	• Immunoprecipitation: 1/200 (10 μ g/mL) * Experiment example : SJRH30 cell line

Other applications have not been tested.
Optimal dilutions/concentrations should be determined by the end user.

References	1) Herz J, et al., <i>EMBO J.</i> 1988 Dec 20;7(13):4119-27. PMID: 3266596 . 2) Stiles TL, et al., <i>J Cell Sci.</i> 2013 Jan 1;126(Pt 1):209-20. PMID: 23132925 . 3) Etique N, et al., <i>Biomed Res Int.</i> 2013;152163. PMID: 23936774 4) Lillis AP, et al., <i>J Thromb Haemost.</i> 2005 Aug;3(8):1884-93. PMID: 16102056 5) Strickland DK, et al., <i>Trends Endocrinol Metab.</i> 2002 Mar;13(2):66-74. PMID: 11854021 6) Huang SH, et al., <i>Cancer Invest.</i> 2013;31: 330–335. PMID: 23614656 7) Meng H, et al., <i>Clin Cancer Res.</i> 2011 Apr 15;17(8):2426-33. PMID: 21325077 8) Yoon C, et al., <i>J Biol Chem.</i> 2013 Sep 13;288(37):26557-68. PMID: 23867460
-------------------	---

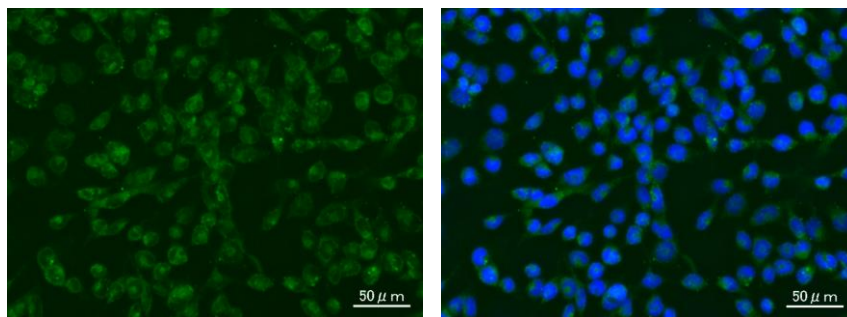
ANTIBODY CHARACTERIZATION



Sample:
 SJRH30 cell lysate
 Primary antibody:
 anti-CD91 (B3-3E11) (2 ug/mL)
 Secondary antibody:
 Anti-IgG (H+L), Mouse (Goat) - HRP (1:2000)
 * SouthernBiotech, Cat.No.1031-05

Lane 1: non-reductive condition
 Lane 2: reduced condition

Fig.1 Western blot analysis of CD91 in SJRH30 cell lysate with anti-CD91 (B3-3E11) antibody



Sample:
 SJRH30 cell line
 Primary antibody:
 anti-CD91 (B3-3E11) (10 ug/mL)
 Secondary antibody:
 Anti-Mouse IgG-Alexa Fluor 488 (8 ug/mL)
 Nuclear staining:
 Hoechst 33342 (Green: antibody, Blue: stained nucleus)

Fig.2 Immunostaining of SJRH30 cell line

RELATED PRODUCTS:

Product Name	Application	Quantity	Maker	Cat#
Anti CD9 (12A12) Monoclonal Antibody	WB / IP / ELISA	100 uL	CAC	SHI-EXO-M01
Anti CD63 (8A12) Monoclonal Antibody	WB / IP	100 uL	CAC	SHI-EXO-M02
Anti CD81 (12C4) Monoclonal Antibody	WB / IP	100 uL	CAC	SHI-EXO-M03
Anti EpCAM (BT-11C5) Monoclonal Antibody	WB / IHC	100 uL	CAC	SHI-EXO-M05

For research use only, Not for diagnostic use.