



MONOCLONAL ANTIBODY

For research use only, Not for diagnostic use.

Catalog No. KYU-TM-M001

Anti Catechin

BACKGROUND

Catechins are one type of polyphenol included in green tea, known to show multimodal effects such as antioxidant, anticancer, anti-allergic, antibacterial and abdominal fat reducing effects. Our antibody reacts with epigallocatechin (EGC), epicatechin galleate (ECg), epigallocatechin galleate (EGCg), galocatechin (GC), catechin galleate (Cg) and galocatechin galleate (GCg).

It especially reacts well with galocatechin galleate (GCg) and epigallocatechin galleate (EGCg).

Product type	Primary Antibodies
Immunogen	3-Succinyl Epicatechin (EC) conjugated KLH
Rased in	Mouse (BALB/c)
Myeloma	-
Clone number	b-1058
Isotype	IgG2a
Source	Ascite
Purification	Ion exchange chromatography
Buffer	Phosphate buffered saline (PBS) *NOTE:PBS doesn't contain preservative. Preservative is added based on the research purpose
Concentration	1 mg / mL
Volume	100 µL
Label	Unlabeled
Specificity	ECg, Cg, GCg, EGCg, GC and EGC Minimal cross reactivity with catechin and epicatechin
Storage	below -20 degrees
Other	-

Application notes	direct ELISA 1 / 10,000 (0.1 µg / mL)
Recommended dilutions	SPR 57 µg / mL Other applications have not been tested. Optimal dilutions/concentrations should be determined by the end user.

References 1.Miyamoto T., et al. Development of novel monoclonal antibodies directed against catechins for investigation of antibacterial mechanism of catechins. *Journal of Microbiological Methods*, Volume 137, June 2017, Pages 6–13. [PubMed ID] [28347725](#)

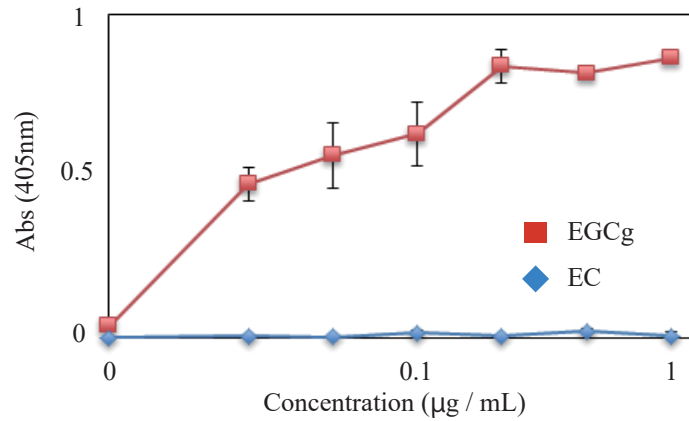
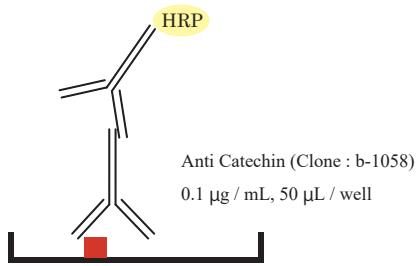


Fig.1 Direct ELISA data of EGCg and EC with Anti Catechin monoclonal Antibody (Clone : b-1058)

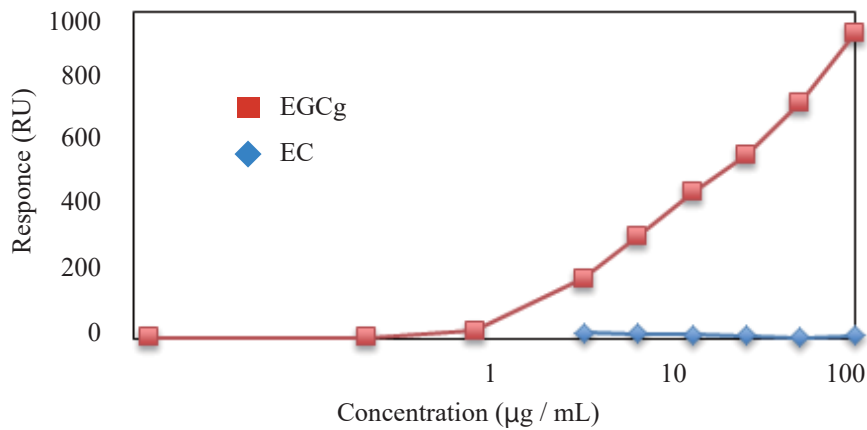


Fig.2 Evaluation of EGCg/EC-Catechin monoclonal antibody (Clone : b-1058) interaction was performed by BIAcoreX. The b-1058 was diluted in 10 mM acetate buffer, pH 5.0 and bind on CM5 sensor chip. Binding of EGCg/EC was determined a range of concentration (0.012 to 100 µg/mL) in 0.1 M phosphate buffer, pH 6.0 containing HBS-EP buffer (0.01 M HEPES pH 7.4, 0.15 M NaCl, 3 mM EDTA, 0.005% v/v Surfactant P20) with a flowrate of 10 µL/min at 25°C.

For research use only, Not for diagnostic use.



COSMO BIO Co., LTD.

【JAPAN】
 TOYO EKIMAE BLDG. 2-20, TOYO 2-CHOME,
 KOTO-KU. TOKYO 135-0016, JAPAN
 Phone: +81-3-5632-9610
 FAX: +81-3-5632-9619
 URL: <https://www.cosmobio.co.jp/>



COSMO BIO USA

【Outside Japan】
 2792 Loker Ave West, Suite 101
 Carlsbad, CA 92010, USA
 email: info@cosmobioussa.com
 Phone/FAX: (+1) 760-431-4600
 URL: www.cosmobioussa.com