



MONOCLONAL ANTIBODY

For research use only, Not for diagnostic use.

Catalog No. KUP-TM-M05

Anti DDB1 [Clone : 43233-3-1]

BACKGROUND

DDB1 was originally identified as a large subunit of damaged DNA-binding protein (DDB), which plays a role in DNA repair. DDB1 also functions as an adaptor molecule of Cul4/DDB1 ubiquitin E3 ligase and participates in various cellular processes.

Product type	Primary antibody
Immunogen	Synthetic peptide derived from C-terminal region of human DDB1
Raised in	Mouse
Myeloma	Mouse P3X63-Ag8.653
Clone number	43233-3-1
Isotype	IgG1 κ
Source	Culture supernatant
Purification	Partially purified from culture supernatant by 50% ammonium sulfate
Buffer	-
Concentration	-
Volume	100 μ l
Label	Unlabeled
Specificity	Human DDB1 (a.a. 1112-1126)
Cross reactivity	Human, Hamster, Chicken
Storage	Store below 4°C (below -20°C for prolonged storage). Aliquot to avoid cycles of freeze/thaw..

Application notes	• Western blotting: 1/1,000
Recommended dilutions	• Immunofluorescence: 1/100 • Immunoprecipitation

Other applications have not been tested.
Optimal dilutions/concentrations should be determined by the end user.

References	1) Wakasugi M, Matsuura K, Nagasawa A, Fu D, Shimizu H, Yamamoto K, Takeda S, Matsunaga T., DDB1 gene disruption causes a severe growth defect and apoptosis in chicken DT40 cells. Biochem Biophys Res Commun. 2007 Dec 28;364(4):771-7. PMID: 17976535
-------------------	--

ANTIBODY CHARACTERIZATION

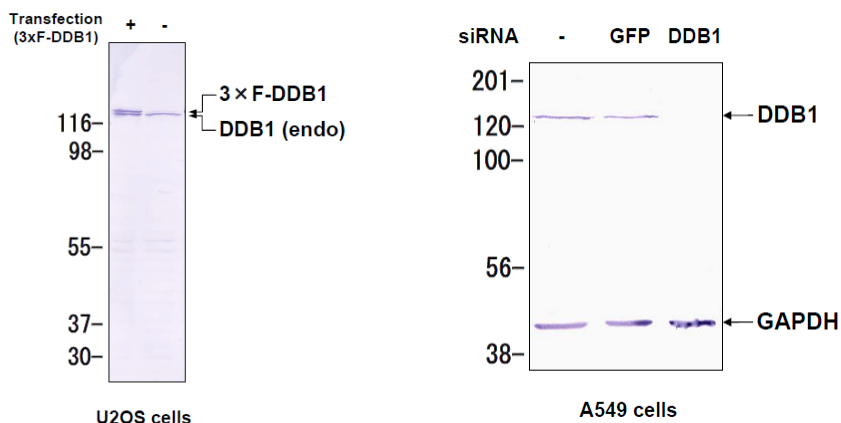


Fig.1 Western blot analysis of DDB1 expression in U2OS cells and A549 cells.

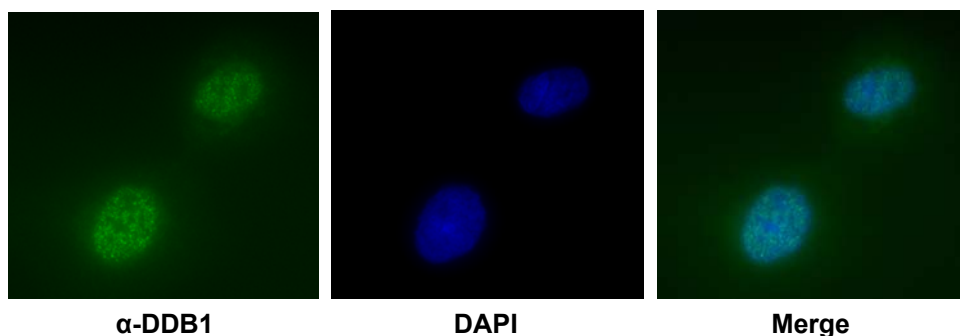


Fig.2 Immunofluorescence of U2OS cells with DDB1 mAb [Clone : 43233-3-1]

RELATED PRODUCT:

Product Name	Maker	Cat#
Anti cyclobutane pyrimidine dimers (CPDs) Monoclonal Antibody (Clone:TDM-2)	CAC	NM-DND-001
Anti (6-4) photoproducts (6-4PPs) Monoclonal Antibody (Clone:64M-2)	CAC	NM-DND-002
Anti Dewar photoproducts (DewarPPs) Monoclonal Antibody (Clone:DEM-1)	CAC	NM-DND-003
Anti Acetylaminofluorene(AAF)-DNA adducts Monoclonal Antibody (Clone:AAF-1)	CAC	NM-MA-001
Anti XPA Monoclonal Antibody (Clone:A-2)	CAC	KUP-TM-M01
Anti XPA Monoclonal Antibody (Clone:5F12)	BAM	70-032
Anti XPF Monoclonal Antibody (Clone:19-16)	CAC	KUP-TM-M02
Anti XPG Monoclonal Antibody (Clone:G-26)	CAC	KUP-TM-M03
Anti ERCC1 Monoclonal Antibody (Clone:E1-44)	CAC	KUP-TM-M04
Anti DDB1 Monoclonal Antibody (Clone:43233-3-1) <i>New</i>	CAC	KUP-TM-M05
PROTAMINE SULFATE COATED ELISA PLATE 96	CSR	NM-MA-P001
PROTAMINE SULFATE COATED ELISA PLATE 96 x 5	CSR	NM-MA-P002
PROTAMINE SULFATE COATED ELISA PLATE 96 x 10	CSR	NM-MA-P003

For research use only, Not for diagnostic use.



COSMO BIO Co., LTD.

Inspiration for Life Science

TOYO 2CHOME, KOTO-KU, TOKYO, 135-0016, JAPAN

URL: <http://www.cosmobio.co.jp>

e-mail: export@cosmobio.co.jp

[Outside Japan] Phone : +81-3-5632-9617

[国内連絡先] Phone : +81-3-5632-9610

FAX : +81-3-5632-9618

FAX : +81-3-5632-9619