

## MONOCLONAL ANTIBODY

*For research use only. Not for clinical diagnosis.*

**Catalog No. KUP-TM-M02**

# Anti XPF monoclonal antibody [Clone : 19-16]

## BACKGROUND

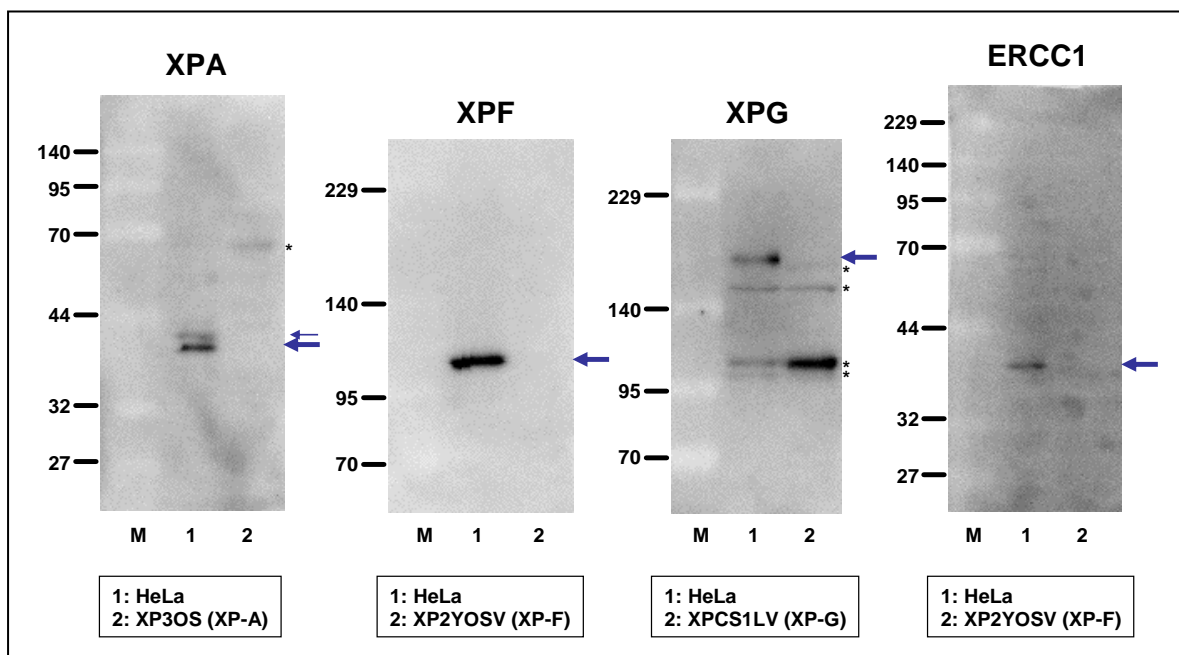
Nucleotide excision repair (NER) is a major repair system for removing a variety of DNA lesions including UV-induced cyclobutane pyrimidine dimer and (6-4) photoproduct as well as chemical-induced bulky base adducts. Defects in the NER system give rise to xeroderma pigmentosum (XP), an autosomal recessive disease characterized by a predisposition to skin cancer and in some cases neurological abnormalities. The early process of human NER, from damage recognition to dual incision (removal of damage-containing oligonucleotides), is accomplished by six core NER factors, XPC-RAD23B, TFIIH, XPA, RPA, ERCC1-XPF and XPG *in vitro*.

**XPF harbors a nuclease domain and forms a stable complex with ERCC1. The ERCC1-XPF complex has a unique ability to make a nick on the DNA strand which makes the transition from duplex to single-stranded DNA in the 5' to 3' direction. In the NER process, ERCC1-XPF is responsible for 5'-incision at a dual incision step.**

<b>Product type</b>	Primary antibodies
<b>Host</b>	Mouse
<b>Source</b>	Partially purified from culture supernatant by 50% ammonium sulfate
<b>Form</b>	Liquid
<b>Volume</b>	100 µl
<b>Specificity</b>	XPF
<b>Antigen</b>	MBP-XPF expressed in E. coli and affinity-purified by amylose column
<b>Clone</b>	19-16
<b>Isotype</b>	IgG1 (k)

<b>Application notes</b>	Western blotting, 1/1,000 Predicted molecular weight: 104 kDa Immunofluorescence 1/200
<b>Cross reactivity</b>	Human, Mouse
<b>Storage</b>	Store below -20°C (below -70°C for prolonged storage). Aliquot to avoid cycles of freeze/thaw.

## ANTIBODY CHARACTERIZATION



## RELATED PRODUCT:

Product Name	Maker	Cat#
Anti cyclobutane pyrimidine dimers (CPDs) Monoclonal Antibody (Clone:TDM-2)	CAC	NM-DND-001
Anti (6-4) photoproducts (6-4PPs) Monoclonal Antibody (Clone:64M-2)	CAC	NM-DND-002
Anti Dewar photoproducts (DewarPPs) Monoclonal Antibody (Clone:DEM-1)	CAC	NM-DND-003
Anti Acetylaminofluorene(AAF)-DNA adducts Monoclonal Antibody (Clone:AAF-1)	CAC	NM-MA-001
Anti XPA Monoclonal Antibody (Clone:A-2)	CAC	KUP-TM-M01
Anti XPG Monoclonal Antibody (Clone:G-26)	CAC	KUP-TM-M03
Anti ERCC1 Monoclonal Antibody (Clone:E1-44)	CAC	KUP-TM-M04
Anti DDB1 Monoclonal Antibody (Clone:43233-3-1)	CAC	KUP-TM-M05
PROTAMINE SULFATE COATED ELISA PLATE 96	CSR	NM-MA-P001
PROTAMINE SULFATE COATED ELISA PLATE 96 x 5	CSR	NM-MA-P002
PROTAMINE SULFATE COATED ELISA PLATE 96 x 10	CSR	NM-MA-P003

For research use only, Not for diagnostic use.



**COSMO BIO Co., LTD.**

【JAPAN】

TOYO EKIMAE BLDG. 2-20, TOYO 2-CHOME,  
KOTO-KU. TOKYO 135-0016, JAPAN  
Phone: +81-3-5632-9610  
FAX: +81-3-5632-9619  
URL: <https://www.cosmobio.co.jp/>



**COSMO BIO USA**

【Outside Japan】

2792 Loker Ave West, Suite 101  
Carlsbad, CA 92010, USA  
email: [info@cosmobiousa.com](mailto:info@cosmobiousa.com)  
Phone/FAX: (+1) 760-431-4600  
URL: [www.cosmobiousa.com](http://www.cosmobiousa.com)