



## POLYCLONAL ANTIBODY

For research use only, Not for diagnostic use.

Catalog No. ICA-TG3-MSP1

## Anti Mouse WDR45L [ WD40 repeat protein ]

### BACKGROUND

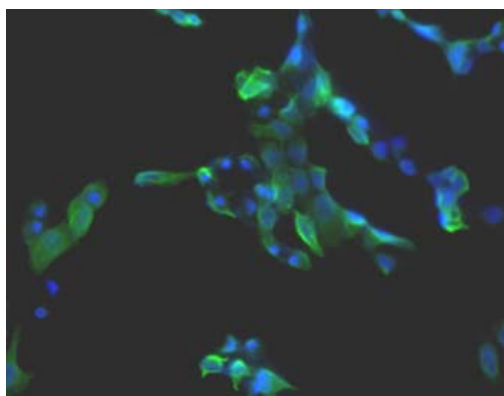
WDR45L is an ubiquitously expressed WD40 repeat protein and is upregulated in a variety of tumor tissues including ovarian and uterine cancers. WD40 repeats are found in a number of eukaryotic proteins that coordinate multi-protein complex assemblies. WD40 proteins are implicated in many functions including adaptor/regulatory modules in signal transduction, pre-mRNA processing and cytoskeleton assembly.

<b>Product type</b>	Primary antibody
<b>Immunogen</b>	ICANtibodies™ encoding murine WDR45L full length nucleic acid sequence
<b>Host Species</b>	Mouse
<b>Fusion Partner</b>	-
<b>Clone Designation</b>	-
<b>Isotype</b>	-
<b>Source</b>	Whole Serum
<b>Purification</b>	-
<b>Formulation Buffer /Form</b>	Liquid (Preservative : None)
<b>Concentration</b>	-
<b>Volume</b>	50 UL
<b>Label</b>	Unlabeled
<b>Specificity</b>	Mouse WDR45L
<b>Cross species reactivity</b>	Other species is not tested.
<b>Storage Conditions</b>	Store at -20°C (at -70°C for prolonged storage). Aliquot to avoid cycles of freeze/thaw.  Storage Instructions : Prepare fresh working dilution before use. Avoid repeated freezing and thawing cycles (it is advisable to make aliquots before storage). Alternatively, add an equal volume of glycerol (ACS grade or better) for a final concentration of 50% and store at -20°C as a liquid.  Note : Adding glycerol reduces the stated protein concentration and dilution range by one-half

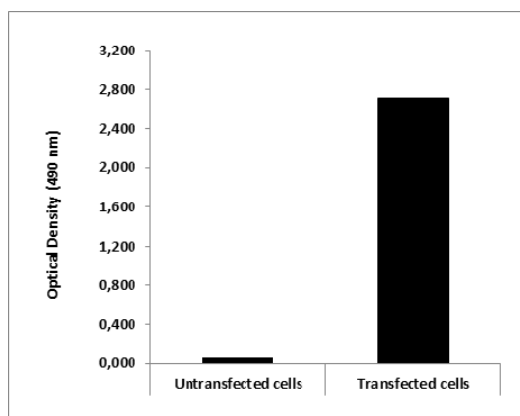
---

<b>Application notes</b>	• <b>Immunohistochemistry:</b> 1/100
<b>Recommended dilutions</b>	• <b>ELISA:</b> 1/200
	Other applications have not been tested. Optimal dilutions/concentrations should be determined by the end user.
<b>References</b>	-

## ANTIBODY CHARACTERIZATION



**Fig.1 Immunohistochemistry:** HeLa cells transfected with plasmid encoding mouse WDR45L were fixed, permeabilized and stained with Rabbit anti- mouse WDR45L Polyclonal Antibodies diluted 1/100 and Alexa488 goat anti mouse IgG secondary antibody. Nuclei were counterstained with DAPI.



**Fig.2 ELISA:** Lysates of untransfected and transfected HeLa cells with plasmid encoding mouse WDR45L were coated in 96 wells plate. Determination anti- mouse WDR45L polyclonal IgG in the mouse sera was performed by using HRP goat anti mouse IgG secondary antibody.

Developed by In-Cell-Art



*For research use only, Not for diagnostic use.*



**COSMO BIO CO., LTD.**

Inspiration for Life Science

TOYO 2CHOME, KOTO-KU, TOKYO, 135-0016, JAPAN

URL: <http://www.cosmobio.co.jp>

e-mail: [export@cosmobio.co.jp](mailto:export@cosmobio.co.jp)

[Outside Japan] Phone : +81-3-5632-9617

[国内連絡先] Phone : +81-3-5632-9610

FAX : +81-3-5632-9618

FAX : +81-3-5632-9619