



## POLYCLONAL ANTIBODY

For research use only, Not for diagnostic use.

Catalog No. ICA-TG1-RBP2

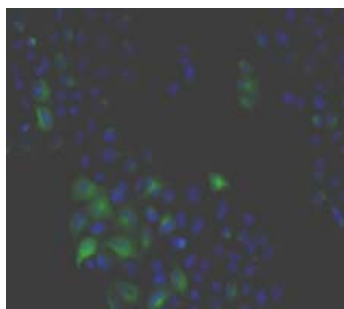
**Anti Human GPNMB [ glycoprotein NMB ]****BACKGROUND**

The transmembrane glycoprotein NMB (GPNMB) is a type I transmembrane glycoprotein which shows homology to the pmel17 precursor, a melanocyte-specific protein .GPNMB has been reported to be expressed in various cell types, including melanocytes, osteoclasts, osteoblasts, dendritic cells and to be overexpressed in various cancer types.

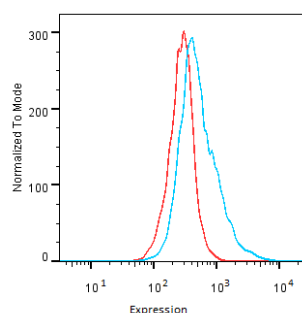
<b>Product type</b>	Primary antibody
<b>Immunogen</b>	ICAntibodies™ encoding human GPNMB full length nucleic acid sequence
<b>Host Species</b>	Rabbit
<b>Fusion Partner</b>	-
<b>Clone Designation</b>	-
<b>Isotype</b>	-
<b>Source</b>	Serum
<b>Purification</b>	The antibody was purified from rabbit sera by immunoaffinity against protein A.
<b>Formulation Buffer /Form</b>	Liquid (Preservative : None)
<b>Concentration</b>	4 mg / mL
<b>Volume</b>	50 UL
<b>Label</b>	Unlabeled
<b>Specificity</b>	Human GPNMB
<b>Cross species reactivity</b>	Rat. Other species is not tested.
<b>Storage Conditions</b>	Store at -20°C (at -70°C for prolonged storage). Aliquot to avoid cycles of freeze/thaw.  Storage Instructions : Prepare fresh working dilution before use. Avoid repeated freezing and thawing cycles (it is advisable to make aliquots before storage). Alternatively, add an equal volume of glycerol (ACS grade or better) for a final concentration of 50% and store at -20°C as a liquid.  Note : Adding glycerol reduces the stated protein concentration and dilution range by one-half

<b>Application notes</b>	
<b>Recommended dilutions</b>	<ul style="list-style-type: none"><li>• <b>Immunohistochemistry:</b> 1/100</li><li>• <b>Flow cytometry:</b> 1/100</li><li>• <b>ELISA:</b> 1/100</li><li>•</li></ul> Other applications have not been tested. Optimal dilutions/concentrations should be determined by the end user.
<b>References</b>	-

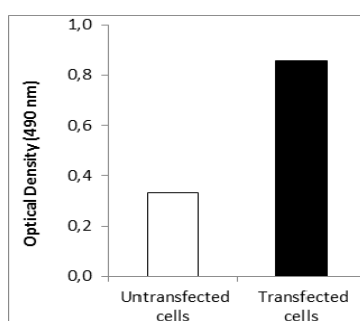
## ANTIBODY CHARACTERIZATION



**Fig.1 Immunohistochemistry:** HeLa cells transfected with ICAfectin441 and plasmid encoding human GPNMB were fixed, permeabilized and stained with Rabbit anti-human GPNMB Polyclonal IgG Antibodies diluted 1/100 and Alexa488 goat anti rabbit IgG secondary antibody. Nuclei were counterstained with DAPI.



**Fig.2 Flow cytometry:** Untransfected (red) and transfected HeLa cells with ICAfectin441 and plasmid encoding human GPNMB (blue) were stained with Rabbit anti-human GPNMB Polyclonal IgG Antibodies (diluted 1/100) and R-PE goat anti rabbit IgG secondary antibody.



**Fig.3 ELISA:** Lysates of untransfected and transfected HeLa cells with ICAfectin441 and plasmid encoding human GPNMB were coated in 96 wells plate. Determination anti-human GPNMB Polyclonal IgG in the rabbit sera was performed by using HRP goat anti rabbit IgG secondary antibody.

### RELATED PRODUCT:

Product Name	Antibody Specificity	Application	Quantity	Maker	Cat#
Anti Human GPNMB Polyclonal Antibody	Human	IHC / FCM / ELISA	50 UL	CAC	ICA-TG1-RBP1
Anti Human GPNMB Polyclonal Antibody	Human / Rat	IHC / FCM / ELISA	50 UL	CAC	ICA-TG1-RBP2
Anti Human GPNMB Polyclonal Antibody	Human / Rat / Mouse	IHC / FCM / ELISA	50 UL	CAC	ICA-TG1-RBP3

Developed by In-Cell-Art



*For research use only, Not for diagnostic use.*



**COSMO BIO CO., LTD.**

Inspiration for Life Science

TOYO 2CHOME, KOTO-KU, TOKYO, 135-0016, JAPAN

URL: <http://www.cosmobio.co.jp>

e-mail: [export@cosmobio.co.jp](mailto:export@cosmobio.co.jp)

[Outside Japan] Phone : +81-3-5632-9617

[国内連絡先] Phone : +81-3-5632-9610

FAX : +81-3-5632-9618

FAX : +81-3-5632-9619