



MONOCLONAL ANTIBODY

Catalog No. GU01-M01AS-A

Anti Schwann Cell/peripheral myelin antibody

Product type	Primary antibodies
Host	Mouse
Source	Ascites
Form	Liquid No preservative is added.
Volume	50 ul
Specificity	Reacts to Myelinating Schwann Cells or Myelin Sheath of Human Peripheral Nerve but not to Oligodendrocytes of Myelin Sheath of Human Central Nerve.
Antigen	Human peripheral nerve extract
Clone	Schwann/2E
Isotype	IgM

Application notes

IHC

Recommended use

Recommended dilutions

Immunohistochemistry 1/10,000

Optimal dilutions/concentrations should be determined by the end user.

Staining Pattern

Cross reactivity

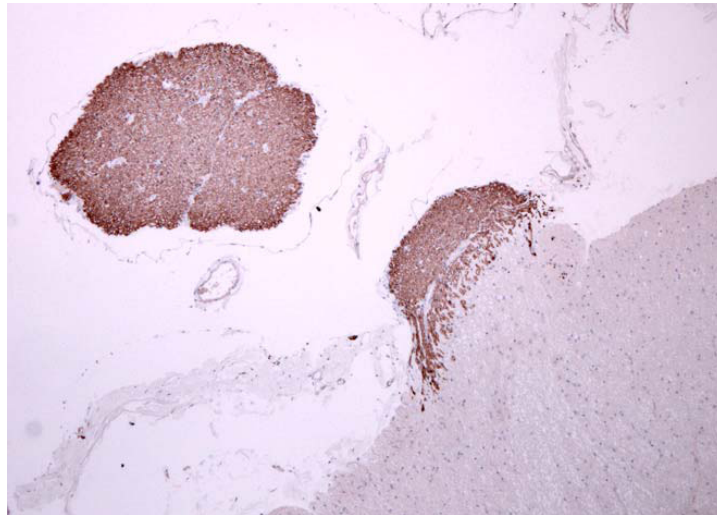
Human, Mouse, Rat

Storage

Store below -20°C (below -70°C for prolonged storage). Aliquot to avoid cycles of freeze/thaw.

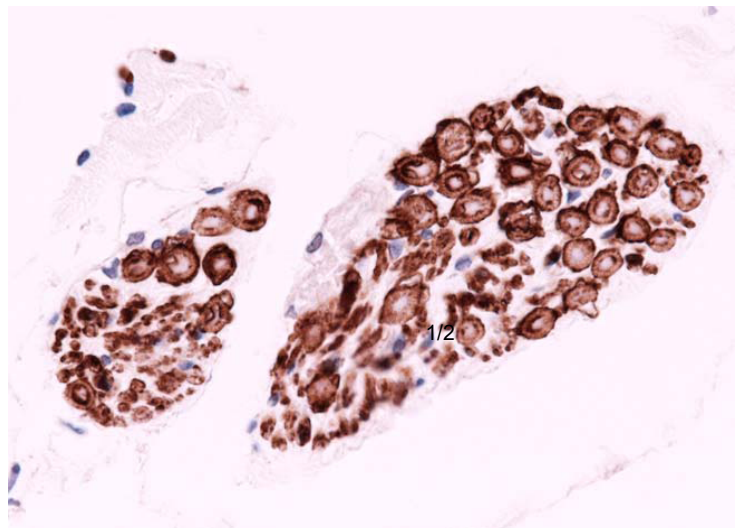
References

- 1) Nakazato Y, et al.: Monoclonal antibodies which recognize phosphorylated and nonphosphorylated epitopes of neurofilament protein. Biomed Res 1987, 8:369-376.
- 2) Arai H, et al.: A novel marker of Schwann cells and myelin of the peripheral nervous system. Pathology Int 1998, 48: 206-214.
- 3) 新井 華子, 他: シュワン細胞と末梢性髄鞘の新しいマーカー (Schwann/2E 抗体) によるシュワン細胞由来腫瘍の検索. Kitakanto Med. J. 1998, 48: 1-8.
- 4) Jasmin L, et al.: Schwann cells are removed from the spinal cord after effecting recovery from paraplegia. J Neurosci. 2000 20:9215-9223.
- 5) Jasmin L, et al.: Remyelination within the CNS: do schwann cells pave the way for oligodendrocytes? Neuroscientist. 2002 8:198-203.
- 6) 舟生 勇人, 他: 中頭蓋窩硬膜より発生した intracranial schwannoma の稀な 1 例. 脳神経外科 2003, 31: 789-793.



(Fig.1) Result of Immunohistochemistry with Schwann/2E

Schwann/2E positively reacts to Spinal Nerves but negative to Parenchymas (lower light area of the figure)
Sample : Spinal Cord of Human (parafin embedded / fixed with formaldehyde)
Dilution Rate : 1/10000
Staining Methods : Streptoavidin/Biotin



(Fig.2) Expansion Graphic of Spinal Nerves stained with Schwann/2E

Schwann Cells and Myelin Sheath are positively stained with Schwann/2E

For research use only. Not for clinical diagnosis.



COSMO BIO Co., LTD.

【JAPAN】
TOYO EKIMAE BLDG. 2-20, TOYO 2-CHOME,
KOTO-KU. TOKYO 135-0016, JAPAN
Phone: +81-3-5632-9610
FAX: +81-3-5632-9619
URL: <https://www.cosmobio.co.jp/>



COSMO BIO USA

【Outside Japan】
2792 Loker Ave West, Suite 101
Carlsbad, CA 92010, USA
email: info@cosmobioussa.com
Phone/FAX: (+1) 760-431-4600
URL: www.cosmobioussa.com