



Anti Epstein-Barr Virus Nuclear Antigen Leader Protein (EBNA-LP)

BACKGROUND

EBNA-LP is one of the first gene products to be expressed together with EBNA-2 upon EBV infection of resting B cells. EBNA-LP plays a critical role in EBV-induced B cell transformation. The LP4D3 antibody can detect the full-length of EBNA-LP that are expressed in LCL and the truncated isoform of EBNA-LP that are expressed in P3HR1.

Product type	Primary Antibodies
Immunogen	GST fused EBNA-LP
Raised in	Mouse
Myeloma	-
Clone number	LP4D3
Isotype	IgG2b, κ
Source	Culture supernatant
Purification	Affinity purified Protein G
Buffer	Phosphate buffered saline containing 0.1% NaN ₃ as a preservative
Concentration	1 mg / mL
Volume	100 μ L (100 μ g)
Label	Unlabeled
Specificity	W2 domain of EBNA-LP
Storage	Store below -20 °C

Application notes	Western blotting (1:1000)
Recommended	Immunofluorescence assay ¹⁾ , Immunoprecipitation assay ¹⁾ Immunohistochemistry (Paraffin); 10 μ g/mL overnight at 4 °C.
dilutions	Other applications have not been tested or not reactive. Optimal dilutions/concentrations should be determined by the end user.
References	1) Shaku F., <i>et al.</i> , (2005) Development of a monoclonal antibody against Epstein-Barr virus nuclear antigen leader protein (EBNA-LP) that can detect EBNA-LP expressed in P3HR1 cells. <i>Microbiol Immunol.</i> , 49 : 477-83. PMID: 15905610

Example Assay Data:

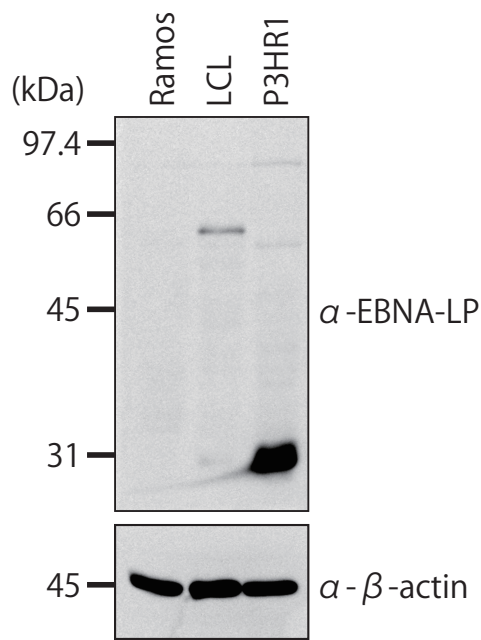


Fig.1
Western blot analysis of EBNA-LP in Ramos, LCL and P3HR1 cell lysate with anti- EBNA-LP antibody (LP4D3, 1 μ g/mL).

Western blot protocol

1. Load 5×10^4 cell lysate samples onto SDS-PAGE gel.
2. Electrotransfer to nitrocellulose membrane.
3. Block membrane in 5% Skim milk in 0.1% PBS-T for 30 min at room temperature.
4. Incubate membrane with 1 μ g/mL LP4D3 primary antibody in 1% BSA in 0.1% PBS-T for 2 hour at room temperature.
5. Incubate membrane with HRP-conjugated anti-mouse IgG secondary antibody in 3% Skim milk in 0.1% PBS-T for 2 hour at room temperature.
6. Detect using an imager.

For research use only, Not for diagnostic use.



COSMO BIO Co., LTD.

【JAPAN】
TOYO EKIMAE BLDG. 2-20, TOYO 2-CHOME,
KOTO-KU. TOKYO 135-0016, JAPAN
Phone: +81-3-5632-9610
FAX: +81-3-5632-9619
URL: <https://www.cosmobio.co.jp/>



COSMO BIO USA

【Outside Japan】
2792 Loker Ave West, Suite 101
Carlsbad, CA 92010, USA
email: info@cosmobiousa.com
Phone/FAX: (+1) 760-431-4600
URL: www.cosmobiousa.com