



**MONOCLONAL ANTIBODY**

For research use only. Not for clinical diagnosis

**Catalog No. CEC-040**

**Anti- CHD2 antibody**

**BACKGROUND**

**CHD2** is a member of the CHD family that contains chromodomain, helicase domain as well as DNA-binding domain. The CHD family is involved in gene expression and transcription by ATP-dependent chromatin remodeling. Analysis of mutant mouse revealed that CHD2 is involved in development as well as hematopoiesis, which suggests the involvement of **CHD2** in gene expression.

<b>Product type</b>	Primary antibody
<b>Immunogen</b>	Recombinant GST-fused fragment of mouse CHD2 (aa 1313-1391).
<b>Host</b>	Rat
<b>Clone number</b>	6D2
<b>Isotype</b>	IgG2a, $\kappa$
<b>Source</b>	Culture supernatant
<b>Purification</b>	Ion-exchange chromatography
<b>Form</b>	Liquid
<b>Presentation</b>	Purified monoclonal antibody in PBS, 50% Glycerol, 0.05%w/v ProClin300
<b>Concentration</b>	1 mg/mL
<b>Volume</b>	100 $\mu$ L
<b>Label</b>	Unlabeled
<b>Specificity</b>	CHD2 Epitope : mouse CHD2 (1313~1383aa)
<b>Cross reactivity</b>	Human, Mouse      Other species have not been tested.
<b>Storage</b>	Store below -20°C (below -70°C for prolonged storage) Aliquot to avoid cycles of freeze/thaw.
<b>Other</b>	-

**Application notes**      **Recommended use**  
WB, ICC, IHC    Not tested for other applications.

**Recommended dilutions**  
Western blotting, 1/1000 to 1/5000  
Immunocytochemistry, 1/100 to 1/500  
Immunohistochemistry, 1/100 to 1/500

Optimal dilutions/concentrations should be determined by the end user.

**References**      1) Harada A, et al. Hybridoma (Larchmt). 2010 Apr;29(2):173-7. PMID: [20443711](https://pubmed.ncbi.nlm.nih.gov/20443711/)  
\* This antibody is used in ref.1.

ANTIBODY CHARACTERIZATION

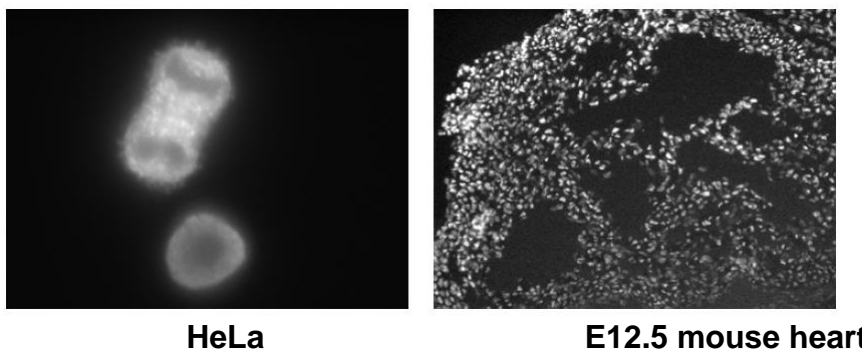


Fig.1 Immunocytochemistry/ Immunofluorescence – CHD2 antibody (6D2), HeLa (left) and E12.5 mouse heart (right)

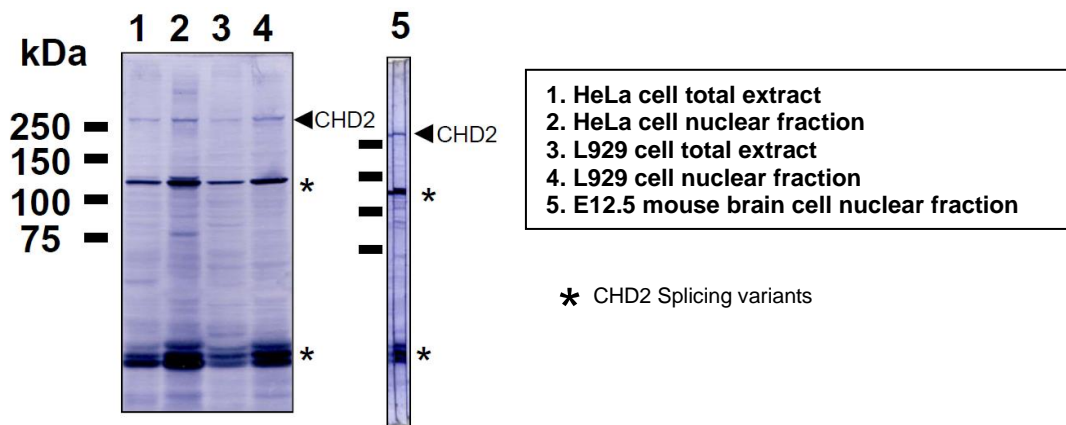


Fig.2 Western blot - CHD2 antibody (6D2), Hela, L929cell and E12.5 mouse brain extracts

*For research use only, Not for diagnostic use.*



**COSMO BIO Co., LTD.**

【JAPAN】  
 TOYO EKIMAE BLDG. 2-20, TOYO 2-CHOME,  
 KOTO-KU. TOKYO 135-0016, JAPAN  
 Phone: +81-3-5632-9610  
 FAX: +81-3-5632-9619  
 URL: <https://www.cosmobio.co.jp/>



**COSMO BIO USA**

【Outside Japan】  
 2792 Loker Ave West, Suite 101  
 Carlsbad, CA 92010, USA  
 email: [info@cosmobioussa.com](mailto:info@cosmobioussa.com)  
 Phone/FAX: (+1) 760-431-4600  
 URL: [www.cosmobioussa.com](http://www.cosmobioussa.com)