



MONOCLONAL ANTIBODY

For research use only. Not for clinical diagnosis

Catalog No. CEC-007

Anti- Histone H3.3 [Clone : 6C4A3]

BACKGROUND

Nucleosomes are composed of four different histone proteins, designated H3, H4, H2A, and H2B. Histone H3 has two main variants, H3.1 and H3.3, which show different genomic localization patterns in eukaryotes. Histone H3.3 serves as the replacement variant for the DNA-synthesis-independent deposition pathway.

Product type	Primary antibody
Immunogen	Synthetic peptide corresponding to core region (aa 79-97) of human H3.3, KTDLRFQSAAGALQEASE
Host	Rat
Clone number	6C4A3
Isotype	IgG2a, κ
Source	Culture supernatant
Purification	Ion-exchange chromatography
Form	Liquid
Presentation	Purified monoclonal antibody in PBS, 50% Glycerol, 0.05%w/v ProClin300
Concentration	1 mg/mL
Volume	100 μ L
Label	Unlabeled
Specificity	Histone H3.3, Epitope : Histone H3.3 (79-97) * Human(HeLa), Monkey(COS1), Mouse(NIH3T3), Rat(NRK), Dog(MDCK)
Cross reactivity	Human, Monkey, Mouse, Rat, Dog Other species have not been tested.
Storage	Store below -20°C (below -70°C for prolonged storage) Aliquot to avoid cycles of freeze/thaw.
Other	Data Link: UniProtKB/Swiss-Prot P84243

Application notes

Recommended use

WB Not tested for other applications.

Recommended dilutions

Western blotting, 1/10000 (Fig.2)

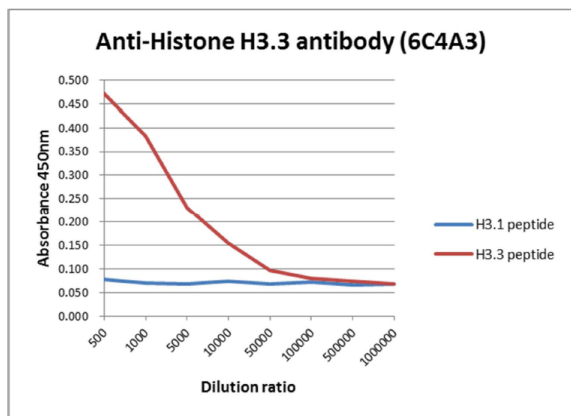
Optimal dilutions/concentrations should be determined by the end user.

References

- 1) Hake SB, *et al.*, Proc Natl Acad Sci U S A. 2006 Apr 25;103(17):6428-35. PMID: [16571659](#)
- 2) Harada, *et al.*, EMBO J. 2012 Jun 29;31(13):2994-3007. PMID: [22569126](#)

* This antibody is used in ref.2.

ANTIBODY CHARACTERIZATION



H3.1 peptide 79 KTDLRFQSSAVMALQEASEA 97

H3.3 peptide 79 KTDLRFQSAIGALQEASEA 97

Fig.1 The composition of Histone H3 variants peptides and the reactivity of Histone H3.3 antibody, 6C4A3.

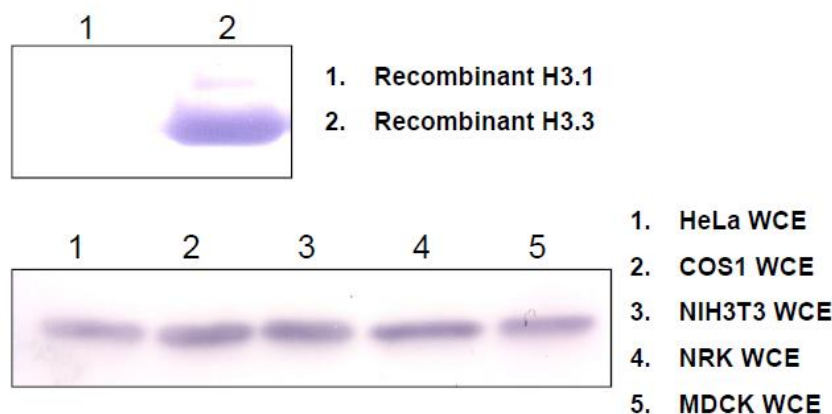


Fig.2 Western blot analysis of recombinant protein and mammalian cell extracts using Histone H3.3 antibody, 6C4A3.

For research use only, Not for diagnostic use.



COSMO BIO Co., LTD.

【JAPAN】

TOYO EKIMAE BLDG. 2-20, TOYO 2-CHOME,
KOTO-KU. TOKYO 135-0016, JAPAN
Phone: +81-3-5632-9610
FAX: +81-3-5632-9619
URL: <https://www.cosmobio.co.jp/>



COSMO BIO USA

【Outside Japan】

2792 Loker Ave West, Suite 101
Carlsbad, CA 92010, USA
email: info@cosmobiousa.com
Phone/FAX: (+1) 760-431-4600
URL: www.cosmobiousa.com