



MONOCLONAL ANTIBODY

For research use only. Not for clinical diagnosis

Catalog No. CEC-001

Anti-Histone H3 S10ph

BACKGROUND

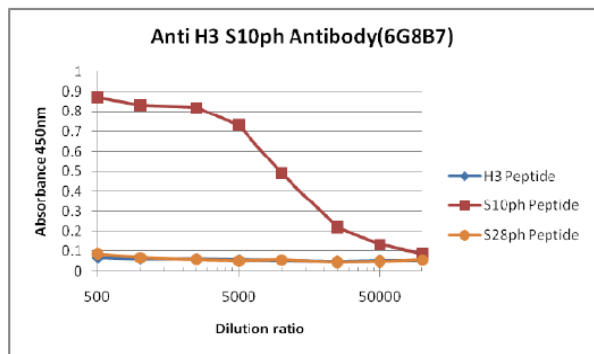
Post-translation modifications of histones modulate the accessibility and transcriptional competence of specific chromatin regions within the eukaryotic genome. Phosphorylation of histone H3 is unique in the sense that it associates on one hand with open chromatin during gene activation and marks on the other hand highly condensed chromatin during mitosis.

Product type	Primary antibody
Immunogen	Synthetic peptide corresponding to N-terminal Ser10ph (aa 1-19) of human Histone H3, ARTKQTARK(phS)TGGKAPRKQ
Host	Rat
Clone number	6G8B7
Isotype	IgG2a, κ
Source	Culture supernatant
Purification	Ion-exchange chromatography
Form	Liquid
Presentation	Purified monoclonal antibody in PBS, 50% Glycerol, 0.05%w/v ProClin300
Concentration	1 mg/mL
Volume	100 μ L
Label	Unlabeled
Specificity	Histone H3 S10ph(1-19)
Cross reactivity	Human, Monkey, Mouse, Rat, Hamster Other species have not been tested.
Storage	Store below -20°C (below -70°C for prolonged storage) Aliquot to avoid cycles of freeze/thaw.
Other	Data Link: UniProtKB/Swiss-Prot P68431 * recommended positive controls is mammalian cell

Application notes	Recommended use WB, ICC Not tested for other applications. Recommended dilutions Western blotting, 1/2500 (Fig.2) Immunocytochemistry, 1/5000 (Fig.3) Optimal dilutions/concentrations should be determined by the end user.
--------------------------	--

References	1) Strahl and Allis, Nature. 2000 Jan 6;403(6765):41-5. PMID: 10638745
-------------------	--

ANTIBODY CHARACTERIZATION



H3 peptide	1	ARTKQTARKS	TGGKAPRKQ	19
H3 S10ph peptide	1	ARTKQTARKS	Sph TGGKAPRKQ	19
H3 S28ph peptide	21	ATKAARK	Sph APATGGVKKPH	39

Fig.1 The composition of Histone H3 peptides and the reactivity of Histone H3 S10ph antibody, 6G8B7.

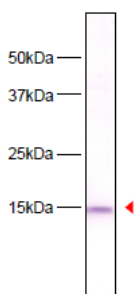


Fig.2 Western blot analysis of HeLa whole cell extracts using Histone H3 S10ph antibody, 6G8B7.

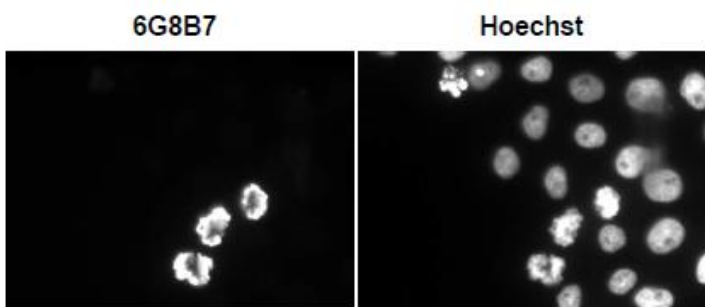


Fig.3 Immunocytochemical analysis of HeLa Cell using Histone H3 S10ph antibody, 6G8B7.

For research use only, Not for diagnostic use.

<p>COSMO BIO Co., LTD.</p> <p>【JAPAN】 TOYO EKIMAE BLDG. 2-20, TOYO 2-CHOME, KOTO-KU. TOKYO 135-0016, JAPAN Phone: +81-3-5632-9610 FAX: +81-3-5632-9619 URL: https://www.cosmobio.co.jp/</p>	<p>COSMO BIO USA</p> <p>【Outside Japan】 2792 Loker Ave West, Suite 101 Carlsbad, CA 92010, USA email: info@cosmobioussa.com Phone/FAX: (+1) 760-431-4600 URL: www.cosmobioussa.com</p>
---	---