

## MONOCLONAL ANTIBODY

*For research use only. Not for clinical diagnosis.*

**Catalog No. CE-052A**

# Anti-Oct4/POU5F1 antibody

## BACKGROUND

Oct4/Pou5f1 is a member of POU transcription factor family, which possess POU domain. This transcription factor forms a trimeric complex with SOX2 on DNA and controls the expression of a number of genes involved in embryonic development such as YES1, FGF4, UTF1 and ZFP206. Oct4/Pou5f1 is critical for early embryogenesis and for embryonic stem cell pluripotency.

<b>Product type</b>	Primary antibodies
<b>Host</b>	Rat
<b>Source</b>	Culture supernatant
<b>Form</b>	Liquid
	Purified monoclonal antibody in PBS, 50% Glycerol, 0.05% NaN <sub>3</sub> .
<b>Volume</b>	100 µl
<b>Concentration</b>	1 mg/ml
<b>Specificity</b>	Oct4/Pou5f1
<b>Antigen</b>	Synthetic peptide corresponding to the C-terminal 15 aa (aa 338 - 352) of mouse Oct4, PSVPVTALGSPMHSN
<b>Clone</b>	1C10
<b>Isotype</b>	IgG2a

**Application notes** WB, ICC Not tested for other applications.

### Recommended dilutions

Western blotting, 1/1,000 to 1/5,000

Immunocytochemistry, 1/100 to 1/500

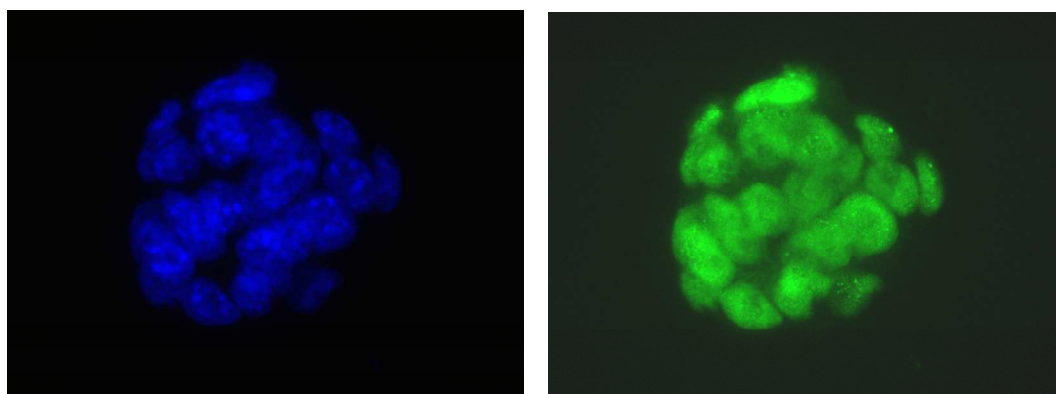


Fig.1 Immunocytochemistry/ Immunofluorescence - Oct4 /Pou5f1 antibody (1C10)  
(blue) DAPI, (green) Oct4 mouse ES cells



Fig.2 Western blot - Oct4 /Pou5f1 antibody (1C10)  
mouse ES total extracts

**Cross reactivity**

Optimal dilutions/concentrations should be determined by the end user.  
Mouse Other species have not been tested.

**Storage**

Store below -20°C (below -70°C for prolonged storage).

**References**

1) Sterneckert, J. et al. (2011) Oct4 and More: The Reprogramming Expressway. Stem Cells. Oct 18. [Epub ahead of print].

*For research use only. Not for clinical diagnosis.*



**COSMO BIO Co., LTD.**

Inspiration for Life Science

TOYO 2CHOME, KOTO-KU, TOKYO, 135-0016, JAPAN

URL: <http://www.cosmobio.co.jp>

e-mail: [export@cosmobio.co.jp](mailto:export@cosmobio.co.jp)

[Outside Japan] Phone : +81-3-5632-9617

[国内連絡先] Phone : +81-3-5632-9610

FAX : +81-3-5632-9618

FAX : +81-3-5632-9619