

MONOCLONAL ANTIBODY

For research use only. Not for clinical diagnosis.

Catalog No. CE-021B

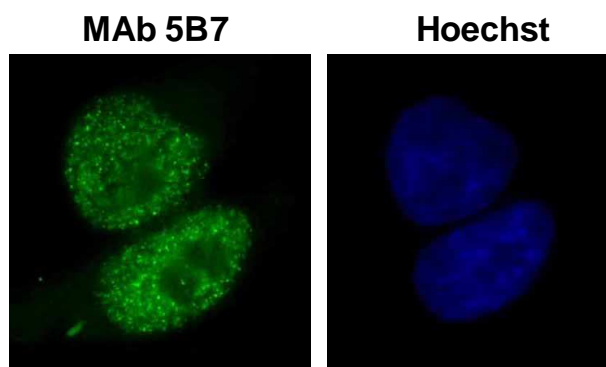
Anti-Brg1 antibody

BACKGROUND

Brg1-related gene-1 (Brg1) is a catalytic subunit of the SWI/SNF chromatin remodeling enzyme complex that has ATPase activity. This complex facilitates chromatin remodeling for gene expression by utilizing energy for ATP hydrolysis. It is well known that the SWI/SNF chromatin remodeling enzyme complex is essential for cell differentiation, cell cycle regulation, and embryogenesis.

Product type	Primary antibodies
Host	Rat
Source	Culture supernatant
Form	Liquid
	Purified monoclonal antibody in PBS, 50% Glycerol, 0.05% NaN ₃ .
Volume	100 µl
Concentration	1 mg/ml
Specificity	Brg1
Antigen	Recombinant GST-fused N-terminus region of human Brg1 (aa 213-295).
Clone	5B7
Isotype	IgG2a

Application notes	WB, ICC, IHC, ChIP, IP
	Recommended dilutions
	Western blotting, 1/1,000 to 1/5,000
	Immunocytochemistry, 1/100 to 1/500
	Immunohistochemistry, 1/100 to 1/500



HeLa cells

Fig.1 Immunocytochemistry/ Immunofluorescence - Brg1 antibody (5B7)
HeLa cells

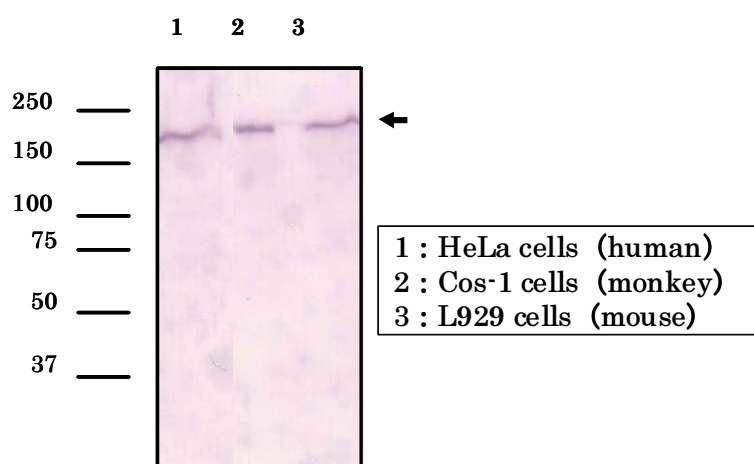


Fig.2 Western blot - Brg1 antibody (5B7)
1.HeLa, 2.Cos-1, L929 cell total extracts

Optimal dilutions/concentrations should be determined by the end user.

Cross reactivity Human, Monkey, Mouse Other species have not been tested.

Storage Store below -20°C (below -70°C for prolonged storage).

References
1) Ohkawa et al., (2007) J. Biol. Chem. 282, 6564-6570.
2) Ohkawa et al., (2010) Hybridoma, 6, 463-466.
This antibody is used in ref.1 and 2.

For research use only. Not for clinical diagnosis.



COSMO BIO Co., LTD.

Inspiration for Life Science

TOYO 2CHOME, KOTO-KU, TOKYO, 135-0016, JAPAN

URL: <http://www.cosmobio.co.jp>

e-mail: export@cosmobio.co.jp

[Outside Japan] Phone : +81-3-5632-9617

[国内連絡先] Phone : +81-3-5632-9610

FAX : +81-3-5632-9618

FAX : +81-3-5632-9619