

**MONOCLONAL ANTIBODY**

*For research use only. Not for clinical diagnosis.*

**Catalog No. CE-021A**

# Anti-Brg1 antibody

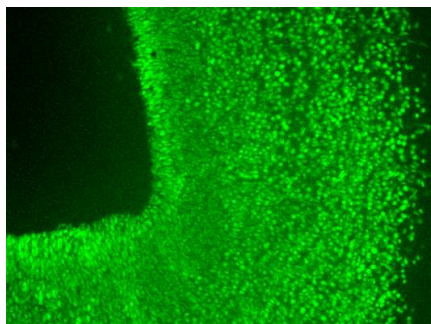
## BACKGROUND

Brg1-related gene-1 (Brg1) is a catalytic subunit of the SWI/SNF chromatin remodeling enzyme complex that has ATPase activity. This complex facilitates chromatin remodeling for gene expression by utilizing energy for ATP hydrolysis. It is well known that the SWI/SNF chromatin remodeling enzyme complex is essential for cell differentiation, cell cycle regulation, and embryogenesis.

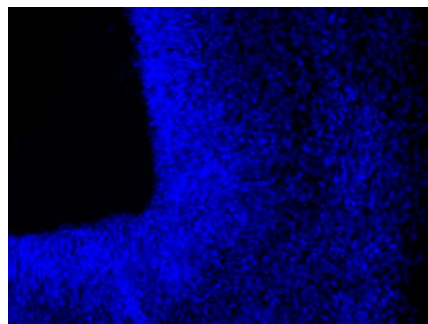
<b>Product type</b>	Primary antibodies
<b>Host</b>	Rat
<b>Source</b>	Culture supernatant
<b>Form</b>	Liquid
	Purified monoclonal antibody in PBS, 50% Glycerol, 0.05% NaN <sub>3</sub> .
<b>Volume</b>	200 µl
<b>Concentration</b>	0.5 mg/ml
<b>Specificity</b>	Brg1
<b>Antigen</b>	Recombinant GST-fused N-terminus region of human Brg1 (aa 213-295).
<b>Clone</b>	3G4
<b>Isotype</b>	IgG1

<b>Application notes</b>	WB, ICC, IHC, ChIP, IP
<b>Recommended dilutions</b>	Western blotting, 1/1,000 to 1/5,000
	Immunocytochemistry, 1/100 to 1/500
	Immunohistochemistry, 1/100 to 1/500

**MAb 3G4**



**Hoechst**



**Mouse E12.5 hind brain**

Fig.1 Immunohistochemistry/ Immunofluorescence - Brg1 antibody (3G4)  
mouse E12.5 hind brain

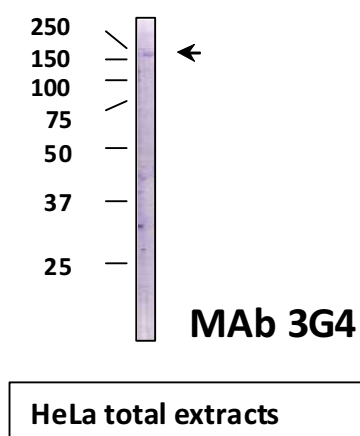


Fig.2 Western blot - Brg1 antibody (3G4)  
HeLa cell total extracts

Optimal dilutions/concentrations should be determined by the end user.

**Cross reactivity** Human, Monkey, Mouse Other species have not been tested.

**Storage** Store below -20°C (below -70°C for prolonged storage).

**References**  
1) Ohkawa et al., (2007) J. Biol. Chem. 282, 6564-6570.  
2) Ohkawa et al., (2010) Hybridoma, 6, 463-466.  
This antibody is used in ref.1 and 2.

*For research use only. Not for clinical diagnosis.*



**COSMO BIO Co., LTD.**

Inspiration for Life Science

TOYO 2CHOME, KOTO-KU, TOKYO, 135-0016, JAPAN

URL: <http://www.cosmobio.co.jp>

e-mail: [export@cosmobio.co.jp](mailto:export@cosmobio.co.jp)

[Outside Japan] Phone : +81-3-5632-9617

[国内連絡先] Phone : +81-3-5632-9610

FAX : +81-3-5632-9618

FAX : +81-3-5632-9619