



**MONOCLONAL ANTIBODY**

*For research use only. Not for clinical diagnosis.*

**Catalog No. CE-013A**

# Anti-AATF/Che-1/Traube antibody

## BACKGROUND

AATF/Che-1/Traube was identified on the basis of its interaction with MAP3K12/DLK, a protein kinase known to be involved in the induction of cell apoptosis. This protein contains an extremely acidic domain and a putative leucine zipper characteristic of transcription factors.

<b>Product type</b>	Primary antibodies
<b>Host</b>	Rat
<b>Source</b>	Culture supernatant
<b>Form</b>	Liquid
<b>Volume</b>	100 µl
<b>Concentration</b>	1 mg/ml
<b>Specificity</b>	AATF/Che-1/Traube
<b>Antigen</b>	Synthetic peptide corresponding to N-terminal 39 aa of mouse AATF, MAAPQPLALQLEQLLNPRPREADPEADPEEATRARVIDR.
<b>Clone</b>	1B2D8
<b>Isotype</b>	IgG2a

**Application notes** WB, ICC Not tested for other applications.

### Recommended dilutions

Western blotting, 1/1,000 to 1/5,000

Immunocytochemistry, 1/100 to 1/500

ELISA, 1/500,000 to 1/5,000,000

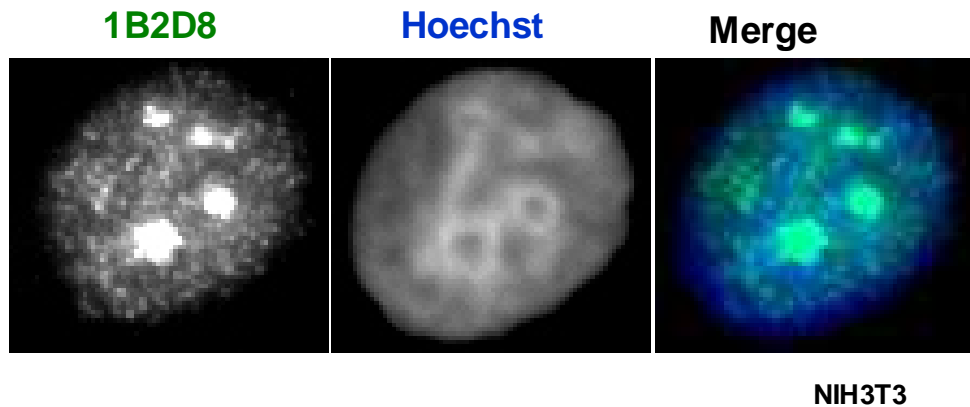


Fig.1 Immunocytochemistry/ Immunofluorescence - AATF/Che-1/Traube antibody (1B2D8) NIH3T3 (mouse) cells

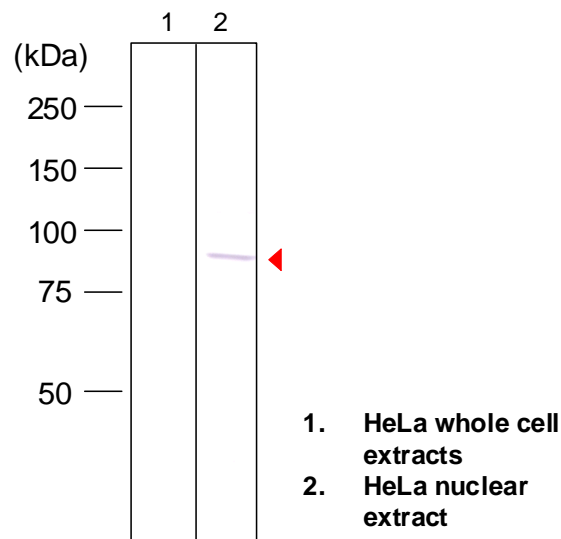


Fig.2 Western blot - AATF/Che-1/Traube antibody (1B2D8)  
HeLa cell total and nuclear extracts

Optimal dilutions/concentrations should be determined by the end user.

**Cross reactivity** Human, Mouse, Rat Other species have not been tested.

**Storage** Store below -20°C (below -70°C for prolonged storage e).

**References** 1) Ishigaki et al., (2010) Cell Death Differ., 17, 774-786.

*For research use only. Not for clinical diagnosis.*



**COSMO BIO Co., LTD.**

Inspiration for Life Science

TOYO 2CHOME, KOTO-KU, TOKYO, 135-0016, JAPAN

URL: <http://www.cosmobio.co.jp>

e-mail: [export@cosmobio.co.jp](mailto:export@cosmobio.co.jp)

[Outside Japan] Phone : +81-3-5632-9617

[国内連絡先] Phone : +81-3-5632-9610

FAX : +81-3-5632-9618

FAX : +81-3-5632-9619