



MONOCLONAL ANTIBODY

For research use only. Not for clinical diagnosis.

Catalog No. CE-012A

Anti-C/EBP β antibody

BACKGROUND

C/EBP β is a bZIP transcription factor which can bind as a homodimer to certain DNA regulatory regions. It can also form heterodimers with the related proteins CEBP-alpha, CEBP-delta, and CEBP-gamma. This protein is important in the regulation of genes involved in immune and inflammatory responses and has been shown to bind to the IL-1 response element in the IL-6 gene, as well as to regulatory regions of several acute-phase and cytokine genes.

Product type	Primary antibodies
Host	Rat
Source	Culture supernatant
Form	Liquid Purified monoclonal antibody in PBS, 50% Glycerol, 0.05% NaN ₃ .
Volume	200 μ l
Concentration	0.5 mg/ml
Specificity	C/EBP beta
Antigen	Recombinant GST-fused mouse C/EBP beta (full length).
Clone	7D2
Isotype	IgG2a

Application notes WB, ICC, IHC Not tested for other applications.

Recommended dilutions

Western blotting, 1/1,000 to 1/5,000

Immunocytochemistry, 1/100 to 1/500

Immunohistochemistry, 1/100 to 1/500

L929 cell

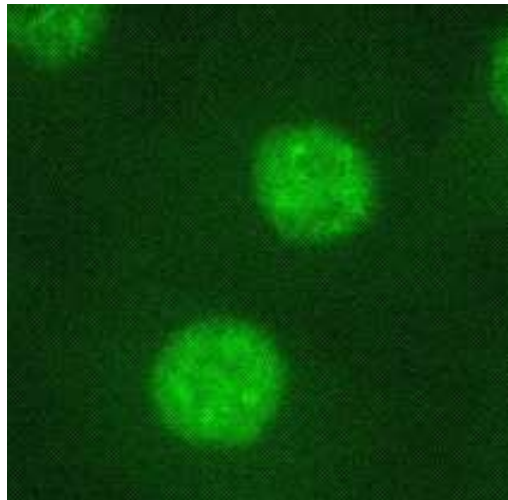


Fig.1 Immunocytochemistry/ Immunofluorescence - C/EBPbeta antibody (7D2)
L929 (mouse) cells

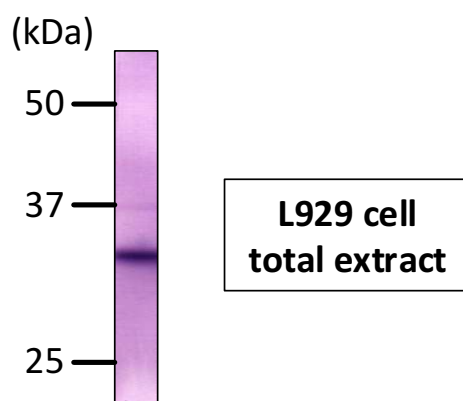


Fig.2 Western blot - C/EBPbeta antibody (7D2)
L929 (mouse) cells total extracts

Optimal dilutions/concentrations should be determined by the end user.

Cross reactivity Mouse Other species have not been tested.

Storage Store below -20°C (below -70°C for prolonged storage).

References 1) Tsukada et al., (2011) Cytokine, 54, 6-19.

For research use only. Not for clinical diagnosis.



COSMO BIO Co., LTD.

Inspiration for Life Science

TOYO 2CHOME, KOTO-KU, TOKYO, 135-0016, JAPAN

URL: <http://www.cosmobio.co.jp>

e-mail: export@cosmobio.co.jp

[Outside Japan] Phone : +81-3-5632-9617

[国内連絡先] Phone : +81-3-5632-9610

FAX : +81-3-5632-9618

FAX : +81-3-5632-9619