



**MONOCLONAL ANTIBODY**

*For research use only. Not for clinical diagnosis.*

**Catalog No. CE-005A**

# Anti-Importin 4 antibody

## BACKGROUND

Importin 4 (IPO4), one of nuclear transport receptor, mediates the nuclear import of RPS3A. In vitro, this protein mediates the nuclear import of human cytomegalovirus UL84 by recognizing a non-classical NLS.

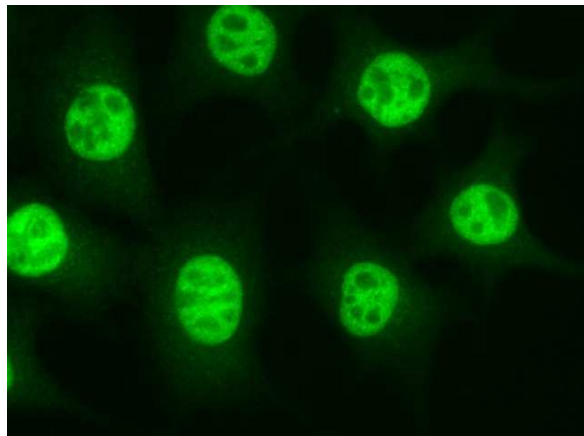
<b>Product type</b>	Primary antibodies
<b>Host</b>	Rat
<b>Source</b>	Culture supernatant
<b>Form</b>	Liquid Purified monoclonal antibody in PBS, 50% Glycerol, 0.05% NaN <sub>3</sub> .
<b>Volume</b>	100 $\mu$ l
<b>Concentration</b>	1mg/ml
<b>Specificity</b>	Importin 4 (IPO4)
<b>Antigen</b>	Recombinant GST-fused mouse importin4 (full length).
<b>Clone</b>	3C2
<b>Isotype</b>	IgG2a

**Application notes** WB, ICC Not tested for other applications.

**Recommended dilutions**

Western blotting, 1/1000 to 1/5000

Immunocytochemistry, 1/100 to 1/500



**L929**

Fig.1 Immunocytochemistry/ Immunofluorescence  
Importin4 antibody (3C2) L929 (mouse) cells

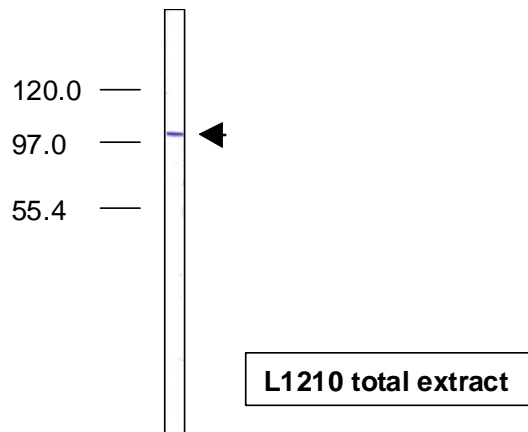


Fig.2 Western blot - Importin4 antibody (3C2)  
L1210 (mouse) cell total extracts

Optimal dilutions/concentrations should be determined by the end user.

**Cross reactivity** Human, Monkey, Mouse, Rat, Hamster

**Storage** Store below -20°C (below -70°C for prolonged storage).

**References**  
1) Miyauchi et al., (2005) J. Biol. Chem., 280, 40901-40908.  
2) Wang et al., (2010) PNAS, 107, 16131-16136.

*For research use only. Not for clinical diagnosis.*



**COSMO BIO Co., LTD.**

Inspiration for Life Science

TOYO 2CHOME, KOTO-KU, TOKYO, 135-0016, JAPAN

URL: <http://www.cosmobio.co.jp>

e-mail: [export@cosmobio.co.jp](mailto:export@cosmobio.co.jp)

[Outside Japan] Phone : +81-3-5632-9617

[国内連絡先] Phone : +81-3-5632-9610

FAX : +81-3-5632-9618

FAX : +81-3-5632-9619