



MONOCLONAL ANTIBODY

Catalog No. ABS-070002

Mouse Anti-feline CD3ε

Product type	Primary antibodies
Host	Mouse
Source	Culture supernatant
Form	Liquid
Volume	Purified IgG prepared by affinity chromatography on Protein G from culture supernatant
(Concentration)	100 µg
Specificity	Reconstitute with sterile PBS containing 0.09% sodium azide
Antigen	Feline CD3ε
Clone	Synthetic protein sequence derived from feline CD3ε
Isotype	5G-6-7-3
	Mouse IgG1

Application notes WB, Flow Cytometry, ELISA (Not tested by IHC)
Recommended use

Recommended dilutions
Western blotting, 1/200—1/1000

Optimal dilutions/concentrations should be determined by the end user.
Staining Pattern

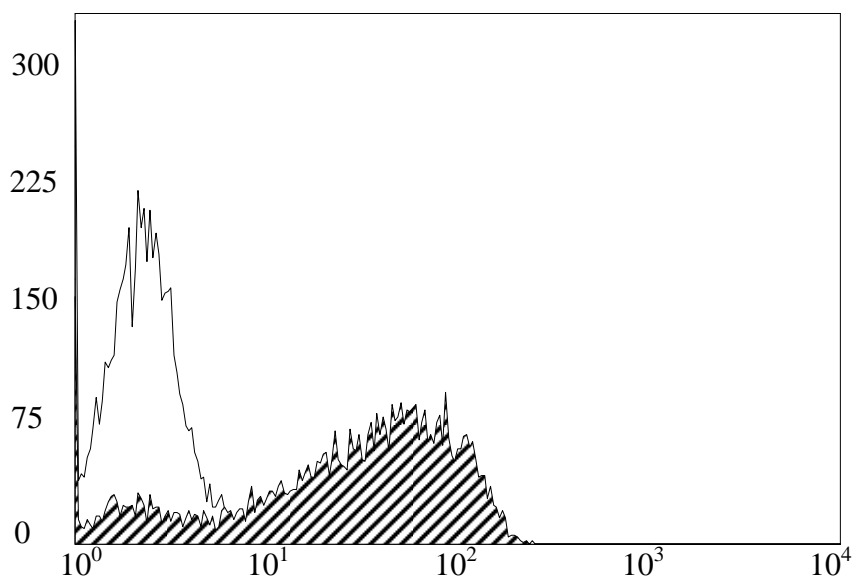
Cross reactivity Feline (Do not react with canine)
Storage Store at 4°C. or -20°C for long term storage.
References No known references at this time

For research use only. Not for clinical diagnosis.



COSMO BIO Co., LTD.
Inspiration for Life Science

Mouse Anti-feline CD3ε



ABS-070002 staining of feline peripheral blood

Mononuclear cells (PBMCs)

Manufactured by Ab Science, Inc.



COSMO BIO Co., LTD.

Inspiration for Life Science

TOYO 2CHOME, KOTO-KU, TOKYO, 135-0016, JAPAN

URL: <http://www.cosmobio.co.jp>

e-mail: export@cosmobio.co.jp

[Outside Japan] Phone : +81-3-5632-9617

[国内連絡先] Phone : +81-3-5632-9610

FAX : +81-3-5632-9618

FAX : +81-3-5632-9619