



MONOCLONAL ANTIBODY

Catalog No. ABS-070001

Mouse Anti-canine CD3 ϵ

Product type	Primary antibodies
Host	Mouse
Source	Culture supernatant
Form	Liquid
Volume	Purified IgG prepared by affinity chromatography on Protein G from culture supernatant
(Concentration)	100 μ g
Specificity	Reconstitute with sterile PBS containing 0.09% sodium azide
Antigen	Canine CD3 ϵ
Clone	Synthetic protein sequence derived from canine CD3 ϵ
Isotype	1B9-7-1-1
	Mouse IgG1

Application notes WB (Not tested by IHC)

Recommended use

Recommended dilutions

Western blotting, 1/200—1/1000

Optimal dilutions/concentrations should be determined by the end user.

Staining Pattern

Cross reactivity Canine (Do not react with feline)

Storage Store at 4°C. Do not freeze.

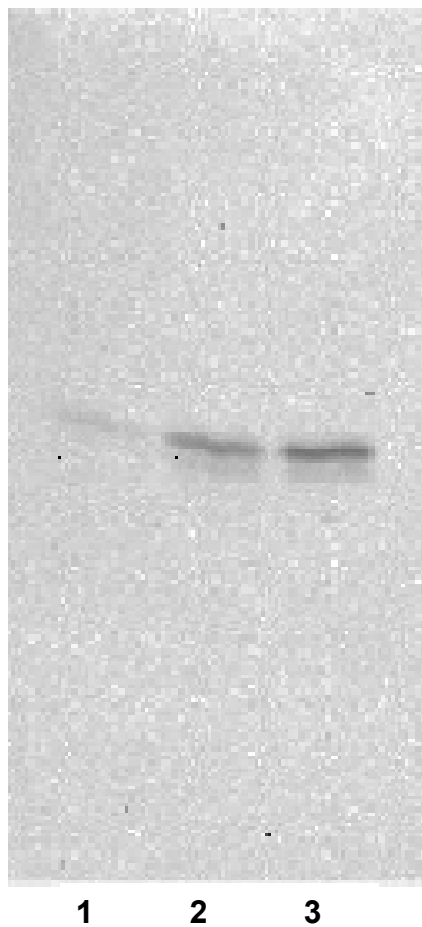
References No known references at this time

For research use only. Not for clinical diagnosis.



COSMO BIO Co., LTD.
Inspiration for Life Science

Mouse Anti-canine CD3ε



1: Peripheral Blood Mono- nuclear Cells (PBMCs)
2: Anti-canine CD3 antibody - stimulated lymphocyte
3: PHA-stimulated lymphocyte

Manufactured by Ab Science, Inc.



COSMO BIO Co., LTD.

Inspiration for Life Science

TOYO 2CHOME, KOTO-KU, TOKYO, 135-0016, JAPAN

URL: <http://www.cosmobio.co.jp>

e-mail: export@cosmobio.co.jp

[Outside Japan] Phone : +81-3-5632-9617

[国内連絡先] Phone : +81-3-5632-9610

FAX : +81-3-5632-9618

FAX : +81-3-5632-9619