

CosmoSonic II[®] Ultrasonic Cell Disruptor

Product list

CosmoSonic II[®] Ultrasonic Cell Disruptor

Product Name	Applicable tubes	Cat. No.	Quantity
CosmoSonic II [®] Type 6	0.5, 1.5, 10, 15, 50 mL	BMB-BR2006A	1 unit
CosmoSonic II [®] Type 12		BMB-BR2012A	1 unit
CosmoSonic II [®] Type 24		BMB-BR2024A	1 unit
Ice cold water circulator for CosmoSonic II [®]		BMB-BR2CR01	1 unit

Accessories for 0.5, 1.5, 10 and 15 mL tubes

Product Name	Applicable tubes	Catalog Number	Quantity	Acceptable model
Gear Plate	0.5, 1.5, 10, 15 mL tubes	BMB-NG-6	1 PC	Type 6
		BMB-NG-310	1 PC	Type 12, 24
0.5 mL Tube Attachment	General	BMB-MAT-05	1 PC	Type 6
		BMB-MAT-310-05	1 PC	Type 12, 24
1.5 mL Tube Attachment	General	BMB-MAT-15	1 PC	Type 6
		BMB-MAT-310-15	1 PC	Type 12, 24
10 mL Resonance Rod Unit	Dedicated tubes (BMB-AS-500)	BMB-CHIP-10	1 set (6 PC)	Type 6
15 mL Resonance Rod Unit	Falcon / Greiner*	BMB-FT-15WS	1 set (3 PC)	Type 12, 24
	Corning / Iwaki*	BMB-CT-15WS		
	SMILON*	BMB-ST-15WS		

Accessories for 50 mL tube

Product Name	Applicable tubes	Catalog Number	Quantity	Acceptable model
Gear Plate	50 mL tube	BMB-NG-50-3	1 PC	Type 6
		BMB-NG-310-50	1 PC	Type 12, 24
50 mL Resonance Rod Unit	Nalgene*	BMB-CHIP-50	1 PC	Type 6
	Falcon / Greiner*	BMB-FT-50WS		
	Corning / Iwaki*	BMB-CT-50WS		
	SMILON*	BMB-ST-50WS		

Consumable goods

Product Name	Applicable tubes	Catalog Number	Quantity
O Ring for	10 mL Resonance Rod Unit	Dedicated tubes (Cat. No. BMB-AS-500, BMB-AS-1000)	BMB-P-10
	15 mL Resonance Rod Unit		BMB-P-10A
	50 mL Resonance Rod Unit	Nalgene*	BMB-P-22A
		Falcon / Greiner*	BMB-P-22B
10 mL Dedicated Tubes		BMB-AS-500	1 pack (500 PC)
TPX 1.5 mL Micro Tube		HTC-M-50001	1 pack (1000 PC)

*Contact us for a list of applicable catalog numbers

CosmoSonic II[®] Ultrasonic Cell Disruptor



Features

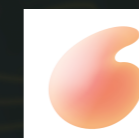
- Choose between 3 capacities (Types 6/12/24) depending on research scale
- Maintain consistent sample cooling with the Ice Cold Water Circulator (sold separately)
- Handle samples easily with the moving tray
- Operate easily with a convenient front control panel
- Choose from a variety of accessories to accommodate your wave disruption needs
- Enjoy seamless lab integration with the sound and temperature absorbing box
- Includes overturning safety accessories

10174



COSMO BIO Co., LTD.

TOYO EKIMAE BLDG. 2-20, TOYO 2-CHOME,
KOTO-KU, TOKYO 135-0016, JAPAN
TEL : (81)3-5632-9617
FAX : (81)3-5632-9618
e-mail : export@cosmobio.co.jp
URL : www.cosmobio.com



COSMO BIO Co., LTD.
Inspiration for Life Science

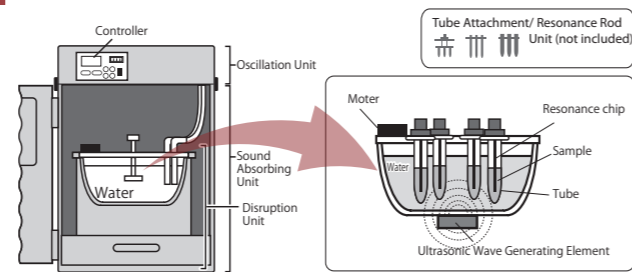
What is ultrasonic wave disruption system CosmoSonic II[®] Ultrasonic Cell Disruptor?

- The CosmoSonic II is a hermetically sealed unit that can be tested free of biohazards, contaminations, and radioisotopes.
- It allows for simultaneous processing of many specimens. (Max. 0.5 mL x 48 tubes)
- It promotes reproducible results for a small or large number of samples.
- The CosmoSonic II can process samples ranging in volume from 0.5 mL to 50 mL depending on the accessory pieces chosen.
- For enhancing the disruption efficiency, autoclavable resonance chip can be used with tubes 10 ml and up.
- An integrated programmable timer allows for easy setup.
- The included high-level Sound Absorbing Box reduces noise from ultrasonic sources.



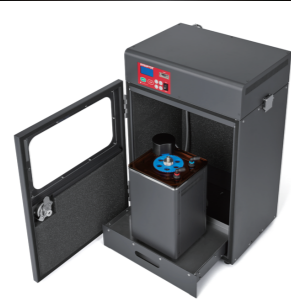
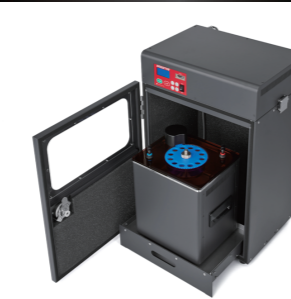

Applications

- Fragmentation of chromatin at ChIP Assay
- Fragmentation of genome DNA for next-generation sequencer
- Extraction of nucleic acid, protein, pigment etc. from cell/tissue
- Disruption *E. coli*, *lactobacillus*, *chlorella* etc.
- Dissolution of hard-soluble samples
- Dispersion of nano particle or catalyser for fuel battery



Types of Units Allow for Flexibility

- Choose your Type depending on your research scale
- Accessories and Cold Water Circulator not included

Model	Type 6		Type 12		Type 24	
Cat. No.	BMB-BR2006A		BMB-BR2012A		BMB-BR2024A	
Includes Oscillation Unit (Disruption Unit, Sound Absorbing Unit)						
	0.5 mL	12 tubes	0.5 mL	24 tubes	0.5 mL	48 tubes
	1.5, 10, 15 mL	6 tubes	1.5, 10, 15 mL	12 tubes	1.5, 10, 15 mL	24 tubes
Maximum of samples that can be processed simultaneously	50 mL	3 tubes	50 mL	6 tubes	50 mL	12 tubes
Disruption unit size (mm)	175(W) × 160(D) × 280(H)		240(W) × 210(D) × 280(H)		320(W) × 180(D) × 280(H)	
Weight	~28 kg		~30 kg		~33 kg	
Ultrasonic Wave Frequency	20 KHz					
Ultrasonic wave output power	High/Low					
Run cycle (Cycle number)	1~60 times					
Interval timer (ON/OFF)	ON: 1~99 Sec. digital OFF: 30~99 Sec. digital					
Oscillation unit size	400(W) × 300(D) × 620(H)					
CosmoSonic II Specification	AC100 V, 50/60 Hz, 5.5 A					

High cooling efficiency of the Ice Cold Water Circulator for CosmoSonic II[®] (sold separately)

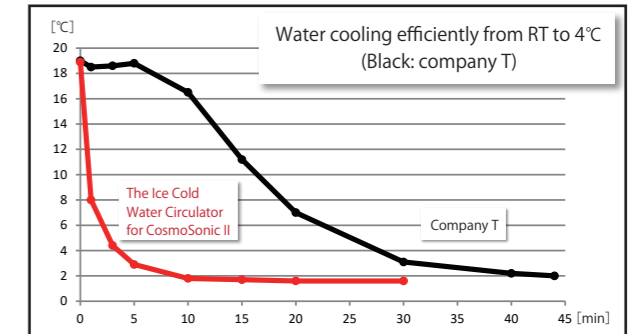
- Uses a generic flake ice as the solvent
- Has a synchronizing function of water flow and ultrasonic oscillation timing of CosmoSonic II[®]
- Full-time ice cold water circulation is available regardless of whether CosmoSonic II[®] is running
- Temperature display of cold circulation water



Installation Size (mm)	300 (W) × 300 (D) × 620 (H)
Power	AC100 V, 50/60 Hz, 1.5 A, 25 W

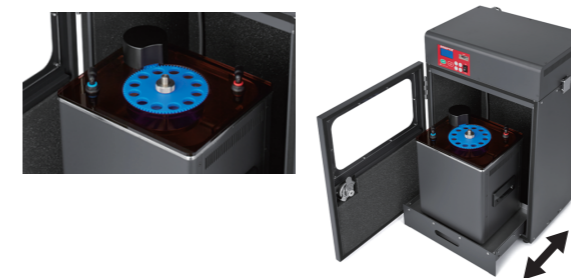
Customize your CosmoSonic II[®] by selecting the accessories you need!

Need to treat another size sample? No problem!
Swap Gear plates and Tube Attachments/
Resonance Rod Units within CosmoSonic II[®] Types



Moving tray for easy sample setting

Easily set samples in Disruption unit.



Easily accessible and operable control panel



A variety of accessories accommodates your ultrasonic wave disruption needs

Match the colored arrows to the accessory catalog number (Tubes shown are not included)

	For 0.5 mL tubes	For 1.5 mL tubes	For 10 mL tubes	For 15 mL tubes	For 50 mL tubes
Compatible with Type 6					
Tube Attachment/Resonance Rod Unit (RRU)	Tube Attachment BMB-MAT-05	Tube Attachment BMB-MAT-15	RRU BMB-CHIP-10	RRU BMB-FT-15WS-CT-15WS-ST-15WS	RRU BMB-CHIP-50-FT-50WS-CT-50WS-ST-50WS
Blue Gear Plate	BMB-NG-6				
Compatible with Types 12 and 24					
Tube Attachment/Resonance Rod Unit (RRU)	Tube Attachment BMB-MAT-310-05	Tube Attachment TOS-MAT-310-15	RRU BMB-CHIP-310	RRU BMB-FT-310-15WS-CT-310-15WS-ST-310-15WS	RRU BMB-CHIP-310-50
Blue Gear Plate	BMB-NG-310				

* According to CosmoSonic II[®] Type, the accessories for previous CosmoSonic models can be used.

Sound Absorbing Box has heat-absorbing fan

No need to worry about external hot surfaces with the internal heat-absorption fan in the Sound Absorbing box.

Safety against overturning is included as standard

Included stabilizing straps provide protection against earthquakes and tipping