

Analyzing functionality of Sugar Chains **GlyScope and Lectins****Lectins Specific for Sialic Acid (Sia)**

Description	Label	Cat. No.	Quantity	Storage
<i>Maackia amurensis</i> [MAM]	Unlabeled	JOM-J110	2 mg	4°C
	Biotin	JOM-J210	1 mg	4°C
	Agarose	JOM-J310	2 ml	4°C
	FITC	JOM-J510	1 mg	-20°C
<i>Sambucus sieboldiana</i> [SSA]	Unlabeled	JOM-J118	5 mg	4°C
	Biotin	JOM-J218	1 mg	4°C
	Agarose	JOM-J318	2 ml	4°C
	FITC	JOM-J518	1 mg	-20°C
<i>Triticum vulgare</i> (Wheat germ) [WGA]	Unlabeled	JOM-J120	5 mg	4°C
	Biotin	JOM-J220	1 mg	4°C
	Agarose	JOM-J320-2ML	2 ml	4°C
	Agarose	JOM-J320-5ML	5 ml	4°C
	HRP	JOM-J420	1 mg	-20°C
	FITC	JOM-J520	1 mg	-20°C

Lectin Sets

Description	Label	Cat. No.	Quantity	Storage
Lectin Set-Biotin 1 (Con A/DBA/LCA/PHA-E4/PNA/ECA/UEA-I/WGA)	Biotin	JOM-J251	1 set	-20°C
Lectin Set-Biotin 2 (ABA/DSA/Lotus/MAM/PHA-L4/SBA/SSA)	Biotin	JOM-J252	1 set	-20°C
Lectin Set-Agarose 1 (Con A/LCA/ECA/WGA)	Agarose	JOM-J351	1 set	4°C
Lectin Set-Agarose 1 (for elution) Sugar Set-1	-	JOM-J354	1 set	4°C
Lectin Set-Agarose 2 (PHA-E4/PHA-L4/PNA/UEA-I)	Agarose	JOM-J352	1 set	4°C
Lectin Set-Agarose 2 (for elution) Sugar Set-2	-	JOM-J355	1 set	4°C
Lectin Set-Agarose 3 (AAL/DSA/MAM/SSA)	Agarose	JOM-J353	1 set	4°C
Lectin Set-Agarose 3 (for elution) Sugar Set-3	-	JOM-J356	1 set	4°C
Lectin Set-HRP 1 (Con A/LCA/PHA-E4/PNA/ECA/WGA)	HRP	JOM-J451	1 set	-20°C
Lectin Set-HRP 2 (Con A/DBA/LCA/PHA-E4/PNA/ECA/UEA-I/WGA)	HRP	JOM-J452	1 set	-20°C
Lectin Set-FITC 1 (Con A/DBA/LCA/PHA-E4/PNA/ECA/UEA-I/WGA)	FITC	JOM-J551	1 set	-20°C
Lectin Set-FITC 2 (ABA/DSA/Lotus/MAM/PHA-L4/SBA/SSA)	FITC	JOM-J552	1 set	-20°C

HPLC Columns for Lectins

Description	Cat. No.	Quantity	Storage
<i>Aleuria aurantia</i> -HPLC Column [AAL]	J601-L	1 pc	RT
<i>Aleuria aurantia</i> -HPLC Column Short [AAL]	J601-S	1 pc	RT
<i>Arachis hypogaea</i> (Peanut)-HPLC Column [PNA]	JOM-J614	1 pc	RT
<i>Canavalia ensiformis</i> (Jack bean)-HPLC Column [Con A]	JOM-J603	1 pc	RT
<i>Datura stramonium</i> -HPLC Column [DSA]	JOM-J605	1 pc	RT
<i>Lens culinaris</i> -HPLC Column [LCA]	JOM-J607	1 pc	RT
<i>Maackia amurensis</i> -HPLC Column [MAM]	JOM-J610	1 pc	RT
<i>Phaseolus vulgaris</i> -HPLC Column [PHA-E4]	JOM-J611	1 pc	RT
<i>Sambucus sieboldiana</i> -HPLC Column [SSA]	JOM-J618	1 pc	RT
<i>Triticum vulgare</i> (Wheat germ)-HPLC Column [WGA]	JOM-J620	1 pc	RT

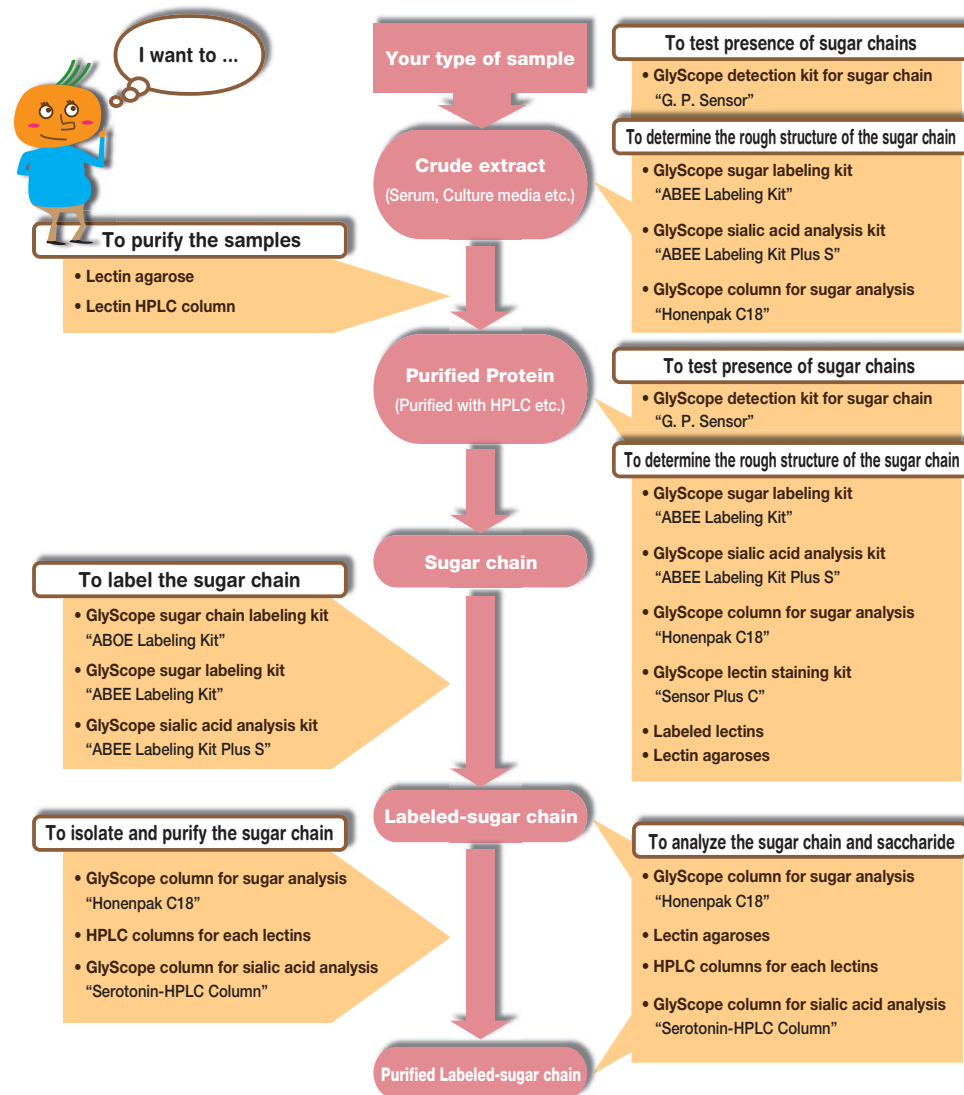
Antibodies for Lectin

Description	Label	Cat. No.	Quantity	Storage
Lectin Anti-H	Unlabeled	JOM-J121	8 ml	4°C
Lectin Anti-H Strong	Unlabeled	JOM-J122	2 ml	4°C

Analyzing functionality of Sugar Chains
GlyScope and Lectins

Sugar chains are well known to function by binding with proteins (glycoproteins) and lipids (glycolipids) in the cell. Glycoproteins and glycolipids have been shown to have various roles *in vivo*.

Find the product you need!



10143



COSMO BIO CO., LTD.

TOYO EKIMAE BLDG. 2-20, TOYO 2-CHOME,
KOTO-KU, TOKYO 135-0016, JAPAN
TEL : (81)3-5632-9617
FAX : (81)3-5632-9618
e-mail : export@cosmobio.co.jp
URL : www.cosmobio.com



www.cosmobio.com

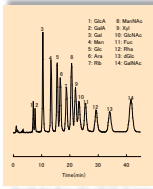


COSMO BIO CO., LTD.

GlyScope

For Analysis of Sugar Chains

- Features**
- Compatible with general-purpose machines in your laboratory
 - Rapid analysis system



Analytic Results of GlyScope ABEE Labeling Kit (Cat. No. JOM-J710)

Description	Label	Cat. No.	Quantity	Storage
GlyScope Sensor plus C, Lectin Staining Kit		JOM-J701	1 kit	4°C
GlyScope G. P. Sensor		JOM-J702	1 kit	4°C
GlyScope Chitoooligo-Agarose		JOM-J703	5 ml	4°C
GlyScope Fucose-Agarose		JOM-J704	5 ml	4°C
GlyScope Lactose-Agarose		JOM-J705	5 ml	4°C
GlyScope Maltose-Agarose		JOM-J706	5 ml	4°C
GlyScope Melibiose-Agarose		JOM-J707	5 ml	4°C
GlyScope Carbohydr-Agarose Set		JOM-J708	1 set	4°C
GlyScope Serotonin-HPLC Column		JOM-J709-L	1 pc	RT
GlyScope Serotonin-HPLC Column Short		JOM-J709-S	1 pc	RT
GlyScope ABEE Labeling Kit		JOM-J710	1 kit	-20°C
GlyScope ABEE Labeling Kit Plus 5 w/o Acetic Anhydride		JOM-J711-EX	1 kit	-20°C
GlyScope Solvent Set (for ABEE Labeling Kit)		JOM-J712	1 set	RT
GlyScope Monosaccharide Mixture-5 (for ABEE Labeling Kit)	Unlabeled	JOM-J713	0.5 ml	-20°C
GlyScope Monosaccharide Mixture-11 (for ABEE Labeling Kit)	Unlabeled	JOM-J714	0.5 ml	-20°C
GlyScope Honenpak C18 (for ABEE Labeling Kit)		JOM-J715	1 pc	RT

Lectins

Lectin is a protein which binds to the sugar chain through recognizing the structure of the sugar chain. It has been shown to be involved in development, differentiation, immunity, canceration and infection.

Lectins Specific for Galactose (Gal)/N-acetylgalactosamine (GalNAc)

Description	Label	Cat. No.	Quantity	Storage	
<i>Agaricus bisporus</i> [ABA]	Unlabeled	JOM-J102	5 mg	4°C	
	Biotin	JOM-J202	1 mg	4°C	
	FITC	JOM-J502	1 mg	-20°C	
<i>Dolichos biflorus</i> [DBA]	Unlabeled	JOM-J104	5 mg	4°C	
	Biotin	JOM-J204	1 mg	4°C	
	HRP	JOM-J404	1 mg	-20°C	
	FITC	JOM-J504	1 mg	-20°C	
<i>Erythrina cristagalli</i> [ECA]	Unlabeled	JOM-J106	5 mg	4°C	
	Biotin	JOM-J206	1 mg	4°C	
	Agarose	JOM-J306	2 ml	4°C	
<i>Phaseolus vulgaris</i> [PHA-E4]	Unlabeled	JOM-J111	5 mg	4°C	
	Biotin	JOM-J211	1 mg	4°C	
	Agarose	JOM-J311-2ML	2 ml	4°C	
	Agarose	JOM-J311-5ML	5 ml	4°C	
	HRP	JOM-J411	1 mg	-20°C	
<i>Phaseolus vulgaris</i> [PHA-L4]	Unlabeled	JOM-J112	5 mg	4°C	
	Biotin	JOM-J212	1 mg	4°C	
	Agarose	JOM-J312	2 ml	4°C	
	HRP	JOM-J412	1 mg	-20°C	
<i>Phaseolus vulgaris</i> [PHA-P]	Unlabeled	JOM-J512	1 mg	-20°C	
	Unlabeled	JOM-J113	50 mg	4°C	
	<i>Arachis hypogaea</i> (Peanut) [PNA]	Unlabeled	JOM-J114	5 mg	4°C
		Biotin	JOM-J214	1 mg	4°C
Agarose		JOM-J314	2 ml	4°C	
HRP		JOM-J414	1 mg	-20°C	
FITC		JOM-J514	1 mg	-20°C	
<i>Glycine max</i> (Soybean) [SBA]	Unlabeled	JOM-J117	5 mg	4°C	
	Biotin	JOM-J217	1 mg	4°C	
	Agarose	JOM-J317	2 ml	4°C	
	HRP	JOM-J417	1 mg	-20°C	
	FITC	JOM-J517	1 mg	-20°C	

Lectins Specific for Mannose (Man)

Description	Label	Cat. No.	Quantity	Storage
<i>Canavalia ensiformis</i> (Jack bean) [Con A]	Unlabeled	JOM-J103	500 mg	4°C
	Biotin	JOM-J203	5 mg	4°C
	Agarose	JOM-J303-100ML	100 ml	4°C
	Agarose	JOM-J303-10ML	10 ml	4°C
	HRP	JOM-J403	2 mg	-20°C
<i>Lens culinaris</i> [LCA]	FITC	JOM-J503	10 mg	-20°C
	Unlabeled	JOM-J107	5 mg	4°C
	Biotin	JOM-J207	1 mg	4°C
	Agarose	JOM-J307	5 ml	4°C
<i>Lens culinaris</i> [LCA-A (isolectin A)]	HRP	JOM-J407	1 mg	-20°C
	FITC	JOM-J507	1 mg	-20°C
	Unlabeled	JOM-J108	5 mg	4°C
<i>Pisum sativum</i> [PSA]	Unlabeled	JOM-J115	5 mg	4°C
	Agarose	JOM-J315	2 ml	4°C

Lectins Specific for Fucose (Fuc)

Description	Label	Cat. No.	Quantity	Storage
<i>Aleuria aurantia</i> [AAL]	Agarose	J301	1 ml	4°C
	FITC	J501	1 mg	4°C
<i>Aleuria aurantia</i> [AAL], recombinant	Unlabeled	JOM-J101-R	1 mg	4°C
	Biotin	JOM-J201-R	1 mg	4°C
<i>Lotus tetragonolobus</i> [Lotus]	Unlabeled	JOM-J109	5 mg	4°C
	Biotin	JOM-J209	1 mg	4°C
	Agarose	JOM-J309	2 ml	4°C
	FITC	JOM-J509	1 mg	-20°C
<i>Ulex europaeus</i> [UEA-I]	Unlabeled	JOM-J119	2 mg	4°C
	Biotin	JOM-J219	1 mg	4°C
	Agarose	JOM-J319	2 ml	4°C
	HRP	JOM-J419	1 mg	-20°C
	FITC	JOM-J519	1 mg	-20°C
<i>Lens culinaris</i> [LCA]	Unlabeled	JOM-J107	5 mg	4°C
	Biotin	JOM-J207	1 mg	4°C
	Agarose	JOM-J307	5 ml	4°C
	HRP	JOM-J407	1 mg	-20°C
<i>Lens culinaris</i> [LCA-A (isolectin A)]	FITC	JOM-J507	1 mg	-20°C
	Unlabeled	JOM-J108	5 mg	4°C
<i>Pisum sativum</i> [PSA]	Unlabeled	JOM-J115	5 mg	4°C
	Agarose	JOM-J315	2 ml	4°C

Lectins Specific for N-acetylglucosamine (GlcNAc)

Description	Label	Cat. No.	Quantity	Storage
<i>Datura stramonium</i> [DSA]	Unlabeled	JOM-J105	5 mg	4°C
	Biotin	JOM-J205	1 mg	4°C
	Agarose	JOM-J305	2 ml	4°C
	HRP	JOM-J405	1 mg	-20°C
	FITC	JOM-J505	1 mg	-20°C
<i>Phytolacca americana</i> [PWM]	Unlabeled	JOM-J116	5 mg	4°C
	Agarose	JOM-J316	5 ml	4°C
<i>Triticum vulgare</i> (Wheat germ) [WGA]	Unlabeled	JOM-J120	5 mg	4°C
	Biotin	JOM-J220	1 mg	4°C
	Agarose	JOM-J320-2ML	2 ml	4°C
	Agarose	JOM-J320-5ML	5 ml	4°C
	HRP	JOM-J420	1 mg	-20°C
	FITC	JOM-J520	1 mg	-20°C