

# Primary antibody detection kit (for quick detection western)

## Easy-WESTERN-II Quick & Super

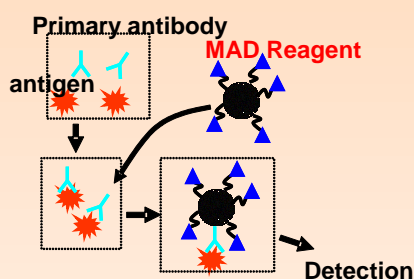
Easy-WESTERN, based on our original MAD (multi-purpose antibody detection) technology, detects the primary antibodies without using the 2nd antibody with rapid protocol.

### Advantages

1. High sensitivity detection without using the 2nd antibody
2. Quick One Step (60 min) detection
3. Possible to simultaneous multiple antigen detection
4. Easy to Use (the renewal provided easier use and more sensitive detection)
5. Provides the easiest method for re-probing

- The performance of this product may vary depending on the set of antigen and antibody.
- The operation time of 60 min is that necessary to detect signals starting from transferred membranes blocking.
- The dilution buffer is modified in the renewed product for easier use and higher sensitivity.

### [Principle]



### [Product lineup]

Product #	Product name	Content
BCL-EZS21	Easy-WESTERN-II Super basic set	High sensitivity detection (for 50 tests)
BCL-EZS22	Easy-WESTERN-II Super marker	basic set + marker detector (for 50)
BCL-EZS24	Easy-WESTERN-II Super mouse	basic set + mouse IgG enhancer (for 50)
BCL-EZS23	Easy-WESTERN-II Super full set	basic set + marker detector + marker
BCL-EZQ21	Easy-WESTERN-II Quick basic set	Quick detection (for 50 tests)
BCL-EZQ22	Easy-WESTERN-II Quick marker	basic set + marker detector (for 50)
BCL-EZQ24	Easy-WESTERN-II Quick mouse IgG	basic set + mouse IgG enhancer (for 50)
BCL-EZQ23	Easy-WESTERN-II Quick full set	basic set + marker detector + marker

\*: Marker detector detects signals of molecular markers, such as MagicMark, that are detected by the aid

\*\* : Mouse IgG enhancer enhances signals when the primary antibody is mouse IgGs, and is essential if 50 doses in a 10 mL assay system

### [Related products]

Product #	Product name	Content
BCL-125	Signal Booster Solution A & B set	250mL each
	Antigen/antibody reaction enhancer. Two solution type.	
BCL-SBN-01	Signal Booster Neo	250mL
	Antigen/antibody reaction enhancer. One solution protein-free type.	
BCL-BKSW-01	Blocking sol. Trial set (western)	20 mL×4 set
	Blocking trial set with 4 different agents (casein, degarade casein, BSA and chemical)	
BCL-EEC-01	Easy ELISA Constructor (ab)	1kit (192 assays)
	Antibody-detecting ELISA builder. The built ELISA is highly sensitive and quick operating.	

### [Produced by]

Beacle, Inc.

14-1 yoshida kawaracho sakyo-ku, Kyoto

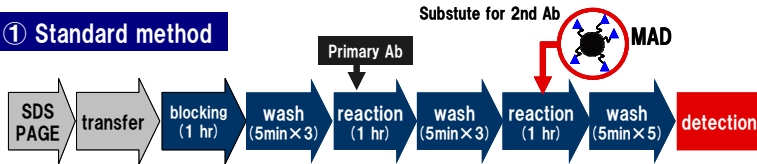
606-8305 Japan

Website: <http://www.beacle.com>.

E-mail: [technical-support@beacle.com](mailto:technical-support@beacle.com)

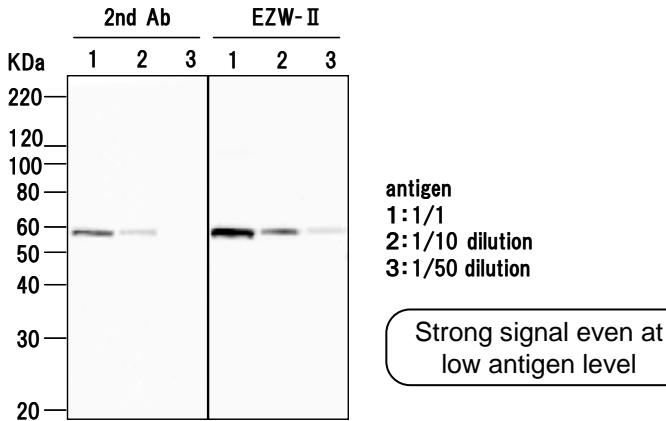
# Experimental examples of Easy-WESTERN (EZW) -II

## ① Standard method

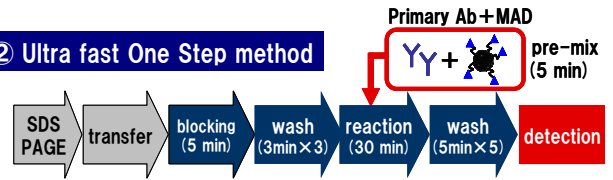


HuH7 Cell Lysate

primary ab : anti-vimentin, mouse IgG2a(1/5000)  
2nd ab : anti-mouse IgG-HRP, rabbit poly (1/5000)  
or MAD (1/2000)

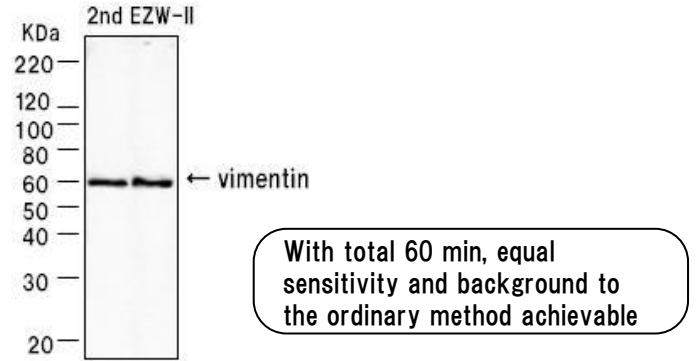


## ② Ultra fast One Step method

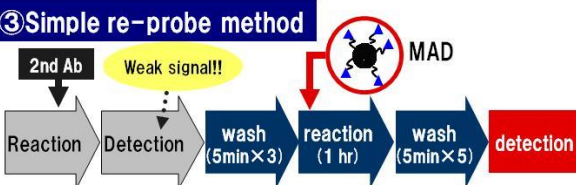


HuH7 Cell lysate

primary ab: anti-vimentin, mouse IgG2a (1/2500)  
2nd ab: anti-mouse IgG-HRP 1/500 with ordinary pc. or  
MAD 1/2000 with ultra fast pc.

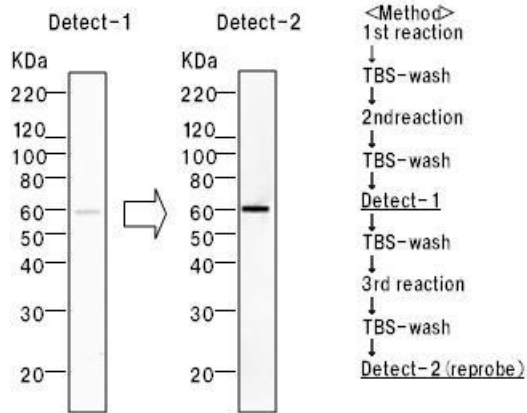


## ③ Simple re-probe method



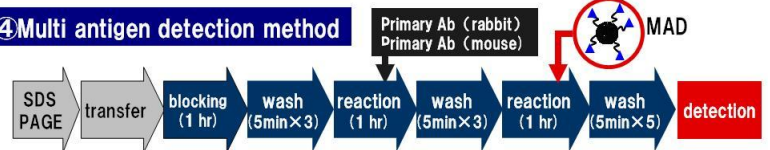
HuH7 Cell Lysate

primary ab : anti-vimentin, mouse IgG2a (1/1000)  
2nd ab : anti-mouse IgG-HRP (rabbit poly, 1/5000)  
reprobing : MAD(1/2000)



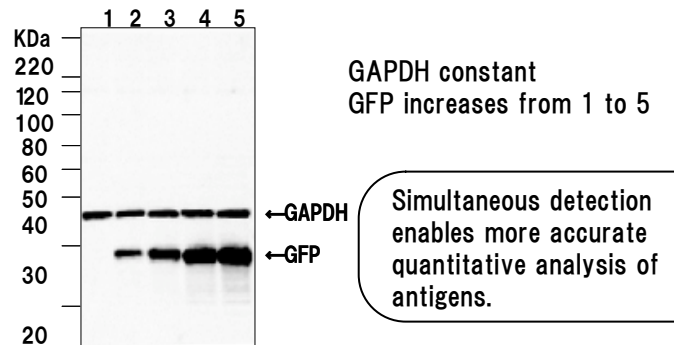
Simply add MAD reagent to membrane with weak signals to get strong signal

## ④ Multi antigen detection method



HuH7 Cell Lysate

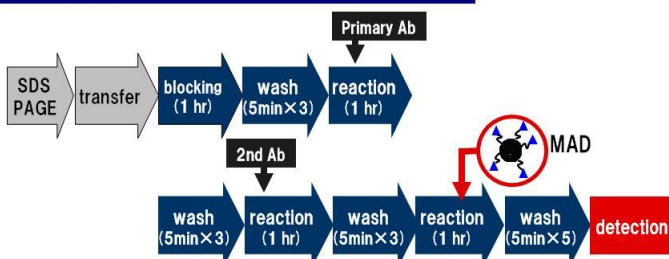
primary ab: anti-GFP, Rabbit poly (1/2000)  
anti-GAPDH, Rabbit mono (1/10000)  
2nd ab.: MAD (1/2000)



HuH7 Cell Lysate

primary ab): anti-vimentin, mouse IgG2a(1/1000)  
2nd ab): anti-mouse IgG-HRP(rabbit poly (1/5000)  
enhancing reaction : MAD(1/2000)

## ⑤ Third reaction method for high sensitivity



The third reaction can be eliminated by pre-mixing of 2nd Ad and MAD reagent.

As the additional signal enhancer to expectedly weak signals

