

Hepatitis B virus surface antigen, Pre-S1 peptides (Recombinant)

Product #* : Pre-S1 peptide : BCL-AGS1-01(no Tag), BCL-AGS1-21(Tagged)

The surface antigen of Hepatitis B virus (HBV) is composed of Pre-S1, Pre-S2, and S domains. The longest surface antigen, which has all the three domains, is called L protein, the middle sized antigen which has Pre-S2 and S domains, is called M protein, and the smallest one consisted of S domain is called S protein. S protein is generally also called HBsAg. Pre-S1 domain is known to be the target molecule of HBV receptors expressed on human hepatic cell surface. On the other hand, Pre-S2 domain is reportedly related to HBV invasion into cells and carcinogenesis. Thus, Pre-S1 and Pre-S2 domains are becoming more and more important in HBV research field.

The products are recombinant peptides having Pre-S1 domain. Two types of peptides are available; one has no tag peptide, and the other is fusion peptide with a tag-peptide. Choose either one suitable for your research purpose.

Production cell : E.coli
 Product form : White lyophilized powder
 content : 100 µg
 Subtype : adr
 Dissolution : Pour 100µL of DW to make 1000 µg/mL of protein in 1% sucrose containing PBS (137mM NaCl, 8.1mM Na₂HPO₄ · 12H₂O, 2.68mM KCl, 1.47mM KH₂PO₄, pH7.3).
 purity : Over 95% (see below SDS-PAGE)
 Preservation : -20°C
 Application : ELISA, WESTERN and others

Amino acid sequence :

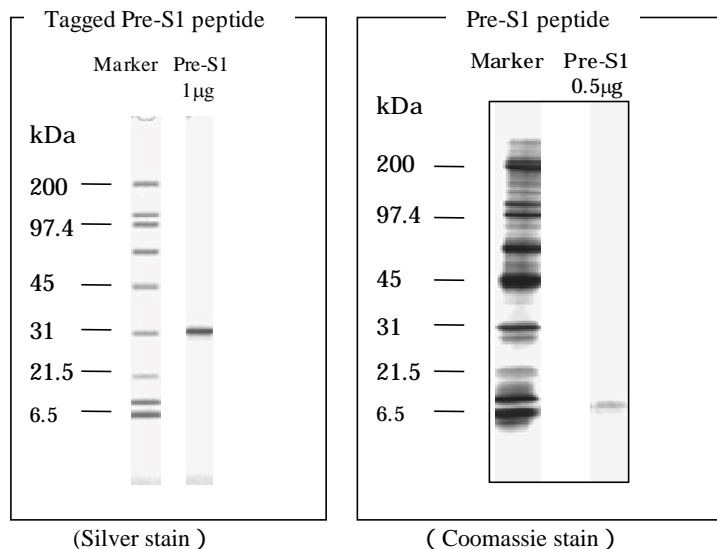
BCL-AGS1-01 (no Tag) :

AMADIGSMGTNLSVNPPLGFFPDHQLDPAFGANSHNPDWDFNPNKDHWPEANQVGAGAFGPGFTPPHGGLLGWSPQAQGVLT
TTVPVAPPASTNRQSGRQPTPISPLRDSHPQA (115aa)

BCL-AGS1-21 (Tagged)

MSDKI IHLTDDSFDTDVLKADGAILVDFWAEWCGPCKMIAPILDEIADEYQGLTVAKLNIDQNPGTAPKYGIRGIPITLLL
FKNGEVAATKVGALSKGQLKEFLDANLAGSGSMHHHHHSSGLVPRGSGMKEATAAKFERQHMDSPDLGTDDDDKAMAD
IGSMGTNLSVNPPLGFFPDHQLDPAFGANSHNPDWDFNPNKDHWPEANQVGAGAFGPGFTPPHGGLLGWSPQAQGVLT
VAPPVAPPASTNRQSGRQPTPISPLRDSHPQA (273aa, underline:Thioredoxin-His Tag)

SDS-PAGE :



Beacle Inc. E-mail: technical-support@beacle.com HP: http://www.beacle.com
--



遺伝子組換え B 型肝炎ウイルス表面抗原 Pre-S1 ペプチド

Hepatitis B Virus Surface Antigen Pre-S1 peptides (Recombinant)

Product #* : Pre-S1 ペプチド : BCL-AGS1-01(Tag 無) , BCL-AGS1-21(Tag 有)

B型肝炎ウイルス (HBV) 表面抗原 (HBsAg) の全長は L タンパク質 (抗原) と呼ばれ、Pre-S1、Pre-S2、S、3つの領域から構成されています。Pre-S1 領域は HBV がヒト肝細胞を認識するドメインで、ヒト肝細胞には Pre-S1 領域を認識する受容体があると言われていています。一方、Pre-S2 領域は HBV の細胞内への侵入に係る他、肝細胞ガン発症にも関係すると言われていています。

本品は、Pre-S1 領域を持つ遺伝子組換えペプチドです。Tag 付のペプチドと Tag なしのペプチドの 2 種類を用意しています。

発現株 : 遺伝子組み換え大腸菌 (E.coli)
 状態 : 凍結乾燥 (白色)
 容量 : 100 µg
 サブタイプ : adr
 溶解方法 : 100 µg 入りバイアルへ精製水を 100µL バイアルに加えて下さい。抗原濃度 1000 µg/mL の 1% sucrose 含有 PBS (137mM NaCl、8.1mM Na₂HPO₄ · 12H₂O、2.68mM KCl、1.47mM KH₂PO₄、pH7.3) 溶液となります。
 純度 : 95%以上 (SDS-PAGE 参照)
 保存 : -20°C (出荷後 3 年間保証)
 用途 : ELISA やウェスタン用の標準抗原

アミノ酸配列 :

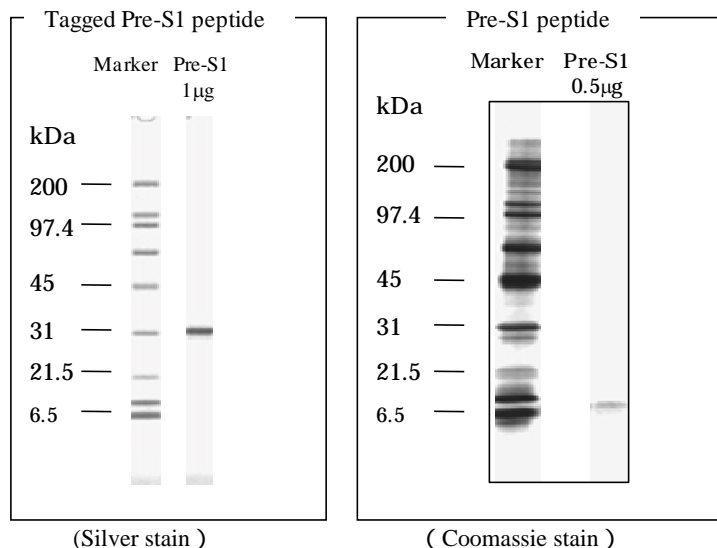
BCL-AGS1-01(Tag 無) :

AMADIGSMGTNLSVNPPLGFFPDHQLDPAFGANSHNPDWDFNPNKDHWPANQVGAGAFGPGFTPPHGGLLGWSPQAQGVLTTPVPVAPPASTNRQSGRQPTPISPPLRDSHPQA (115aa)

BCL-AGS1-21(Tag 有)

MSDKIIHLTDDSFDTDVLKADGAILVDFWAEWCGPCKMIAPILDEIADEYQGLTVAKLNIDQNPGTAPKYGIRGIPTLLL
 FKNGEVAATKVGALSKGQLKEFLDANLAGSGSGMHSHHHSSGLVPRGSGMKEATAAKFERQHMDSPDLGTTTTDDKAMAD
 IGSMTNLSVNPPLGFFPDHQLDPAFGANSHNPDWDFNPNKDHWPANQVGAGAFGPGFTPPHGGLLGWSPQAQGVLTTPV
 VAPPASTNRQSGRQPTPISPPLRDSHPQA (273aa, 下線部は Thioredoxin-His Tag 配列)

SDS-PAGE :



株式会社ビークル

E-mail: technical-support@beacle.com

HP: <http://www.beacle.com>

