



# Hepatitis B virus surface antigen, Pre-S1 peptides (Recombinant)

Product #\* : Pre-S1 peptide : BCL-AGS1-02(no Tag), BCL-AGS1-22(Tagged)

The surface antigen of Hepatitis B virus (HBV) is composed of Pre-S1, Pre-S2, and S domains. The longest surface antigen, which has all the three domains, is called L protein, the middle sized antigen which has Pre-S2 and S domains, is called M protein, and the smallest one consisted of S domain is called S protein. S protein is generally also called HBsAg. Pre-S1 domain is known to be the target molecule of HBV receptors expressed on human hepatic cell surface. On the other hand, Pre-S2 domain is reportedly related to HBV invasion into cells and carcinogenesis. Thus, Pre-S1 and Pre-S2 domains are becoming more and more important in HBV research field.

The products are recombinant peptides having Pre-S1 domain. Two types of peptides are available; one has no tag peptide, and the other is fusion peptide with a tag-peptide. Choose either one suitable for your research purpose.

- Production cell : E.coli
- Product form : White lyophilized powder
- content : 100 µg
- Subtype : adr
- Dissolution : Pour 100µL of DW to make 1000 µg/mL of protein in 1% sucrose containing PBS (137mM NaCl, 8.1mM Na2HPO4 · 12H2O, 2.68mM KCl, 1.47mM KH2PO4, pH7.3).
- purity : Over 95% (see below SDS-PAGE)
- Preservation : -20°C
- Application : ELISA, WESTERN and others

Amino acid sequence :

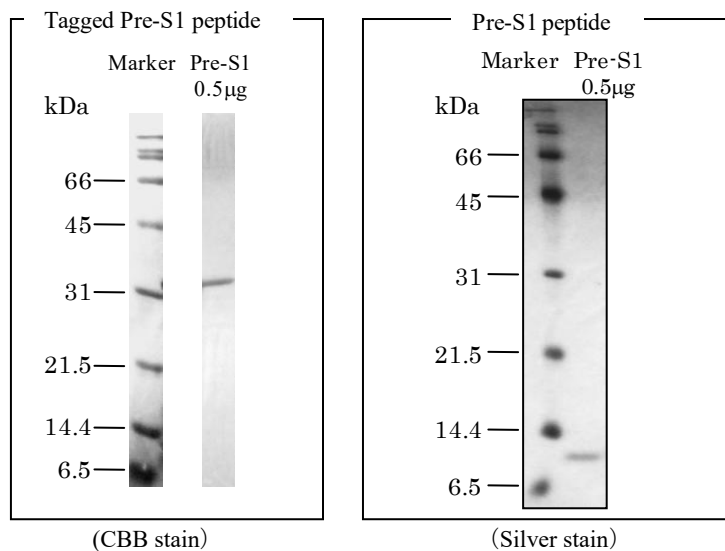
BCL-AGS1-02 (no Tag) :

GPMGTNLSVNPPLGFFPDHQLDPAFGANSHNPDWFNPNKDHWPANQVGAGAFGPGFTPPHGGLLGWSPQAQGVLTTPVPV  
APPASTNRQSGRQPTPI SPPLRDSHPQA (110aa)

BCL-AGS1-22 (Tagged)

MSDKIIHLTDDSFDTDVLKADGAILVDFWAEWCGPCKMIAPILDEIAD EYQGLTVAKLNIDQNPGTAPKYGIRGIPTLLL  
FKNGEVAATKVGALSKGQLKEFLDANLAGSGSGHMHSHHSSGLVPRGSGMKETA AAKFERQHMDSPDLGTD DDDKAMAD  
IGSLEVL FQGPMTNLSVNPPLGFFPDHQLDPAFGANSHNPDWFNPNKDHWPANQVGAGAFGPGFTPPHGGLLGWSPQA  
QGVLTTPVPVAPPASTNRQSGRQPTPI SPPLRDSHPQA (281aa, underline indicates Thioredoxin-His Tag sequence)

SDS-PAGE :



**COSMO BIO Co., LTD.**  
 TOYO EKIMAE BLDG. 2-20, TOYO 2-CHOME,  
 KOTO-KU, TOKYO 135-0016, JAPAN  
 TEL : (81)3-5632-9617 FAX : (81)3-5632-9618  
 e-mail : export@cosmobio.co.jp  
 URL : www.cosmobio.com