



Anti- Centrin 1 antibody, affinity purified (rabbit polyclonal)

Centrin 1 (human; 172 aa, MW; 19,570) plays a fundamental role in microtubule organizing center structure and function. Centrin, also known as caltractins, are a family present in the centrioles and pericentriolar lattice. Human centrin genes are CETN1, CETN2 and CETN3. Centrin, are required for duplication of centrioles. They may also play a role in severing of microtubules by causing calcium-mediated contraction

Applications

- 1) Western blotting (~ 1/1,000 dilution)
- 2) Immunofluorescent staining (1/100~1/1,000 dilution)

Not tested with other applications

Reactivity: Reacts with human centrin-1. Not tested with other species.

Immunogen: C-terminal peptide of human Centrin-1; 155C-GEVNEEEFLRIMKK168 conjugated with KLF

Purity: Affinity-purified with the immunogen peptide

Form: 1mg/ml in PBS, 50% glycerol. Filter-sterilized.

Size: 100 ug

Storage: Shipped at 4°C or -20°C. Upon arrival, aliquot and store at -20°C

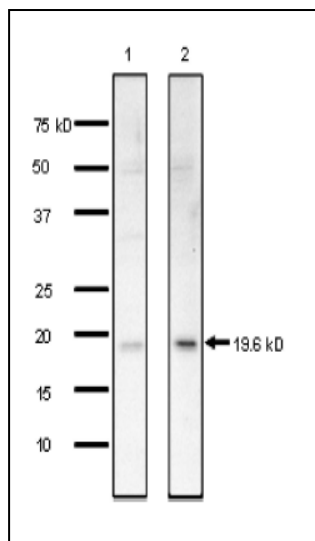


Fig.1 Identification of Centrin-1 in the crude extracts of human cells by Western blotting with this antibody
HeLa cells (lane 1, 10 µg) and MCF-7 cells (lane 2, 20 µg). The antibody was used at 1/1000 dilution.

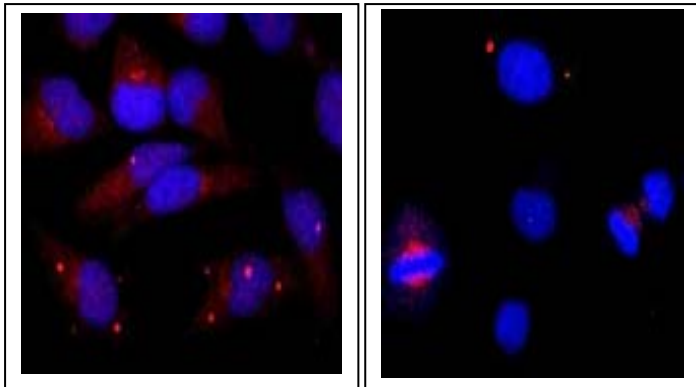


Fig.2. Immunofluorescence staining of Centrin 1 protein in HeLa cells with anti-Centrin 1 antibody.

Growing HeLa cells were fixed with 4% paraformaldehyde, and permeabilized with 0.25% Triton X-100. Anti-Centrin 1 antibody was used at 1/100 dilution. As 2nd antibody, goat anti-rabbit IgG conjugated with Alex 488 (red) at 1/1,000 dilution. DNA was stained with DAPI (blue).

For research use only. Not for clinical diagnosis.

Manufactured by BioAcademia Inc.



COSMO BIO Co., LTD.

Inspiration for Life Science

TOYO 2CHOME, KOTO-KU, TOKYO, 135-0016, JAPAN

URL: <http://www.cosmobio.co.jp>

e-mail: export@cosmobio.co.jp

[Outside Japan] Phone : +81-3-5632-9617

[国内連絡先] Phone : +81-3-5632-9610

FAX : +81-3-5632-9618

FAX : +81-3-5632-9619