



Anti-Sds23 (*S. pombe*) antibody, rabbit serum

BACKGROUND

Schizosaccharomyces pombe **Sds23** protein functions to facilitate the progression in anaphase in mitotic cell cycle. For initiating anaphase in fission yeast, PP1 (protein phosphatase 1) and 20S cyclosome/APC are required. The **sds23** gene is a multicopy suppressor for mutations in PP1 and the 20S cyclosome/APC, implying that the gene dosage increase can relieve the requirement for PP1 and the cyclosome/APC for the onset of anaphase. The **sds23** gene encodes a 408 aa product and appears to be conserved. The **sds23** gene is not essential for cell viability, but in the **sds23** deletion mutant, the progression of anaphase and cytokinesis are retarded and cell shape is aberrant. Therefore **Sds23** protein is involved in progression in anaphase as well as in cytokinesis and cell shape control. **Sds23** is neither physically bound to PP1 nor a subunit of the cyclosome. It possibly regulates the PP1 and 20S cyclosome/APC in an unknown fashion.

Product type	Primary antibodies
Host	Rabbit
Source	serum
Form	Liquid Rabbit antiserum added with 0.05 % sodium azide
Volume	200 µl
Concentration	
Specificity	Sds23
Antigen	Recombinant <i>S. pombe</i> Sds23 corresponding to aa 98-345
Isotype	

Application notes Immunoblotting, IP
Recommended use

Recommended dilutions
Immunoblotting (dilution: 1/500)

Optimal dilutions/concentrations should be determined by the end user.

Data Link: [Swiss-Prot Q09826](#)

Staining Pattern

Cross reactivity Specific to *S. pombe*

Storage -20°C

References 1) Ishii K *et al* "Requirement for PP1 phosphatase and 20S cyclosome/APC for the onset of anaphase is lessened by the dosage increase of a novel gene *sds23+*." **EMBO J.** 15: 6629-6640 (1996) PMID: [8978689](#)

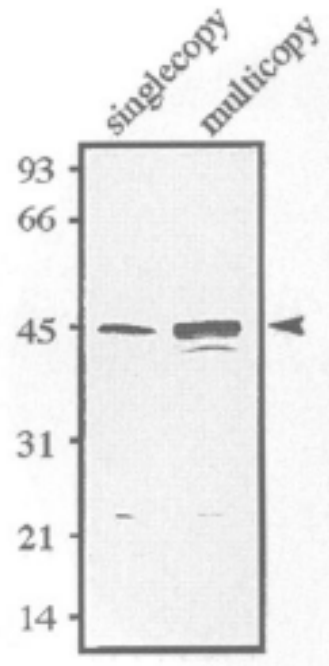


Fig.1, Identification of Sds23 protein (ref.1).

Extracts of wild-type and wild-type carrying psds23 were made and immunoblotted using anti-Sds23 antibodies.

For research use only. Not for clinical diagnosis.

Manufactured by BioAcademia, Inc.



COSMO BIO Co., LTD.

Inspiration for Life Science

TOYO 2CHOME, KOTO-KU, TOKYO, 135-0016, JAPAN

URL: <http://www.cosmobio.co.jp>

e-mail: export@cosmobio.co.jp

[Outside Japan] Phone : +81-3-5632-9617

[国内連絡先] Phone : +81-3-5632-9610

FAX : +81-3-5632-9618

FAX : +81-3-5632-9619