



Catalog No. 63-003EX

Anti-Rad22/Rad52 (*S. pombe*) antibody, affinity purified

Rad22 protein of *Schizosaccharomyces pombe* (469 aa, 52 kDa) is a functional and structural homolog of *Saccharomyces cerevisiae* and human Rad52 proteins, which play a major role together with Rhp51 in genetic recombination and recombination repair, by mediating strand annealing reaction between homologous DNA strands.

Applications

- 1) Western blotting (x 2,000~5,000 dilution)
- 2) Immunoprecipitation
- 3) Immunofluorescence Staining
- 4) ELISA

Immunogen: Recombinant full-size Rad22 protein of *S. pombe*
Expressed in *E. coli*.

Purification: Affinity-purified with highly purified Rad22 protein
conjugated with agarose beads.

Form: 1 mg/ml in PBS with 50% Glycerol, filter-sterilized

Size: 50 ul

Storage: Sent at 4°C or -20°C and store at -20°C

Data Link: [SwissProt: P36592](#) *Schizosaccharomyces pombe*

□ [Entrez Gene: 2543086](#) *Schizosaccharomyces pombe*

Reference

1. Lehmann AR "Molecular biology of DNA repair in the fission yeast *Schizosaccharomyces pombe*." *Mutation Res* **363**:147-161 Review (1996) PMID: [8765156](#)

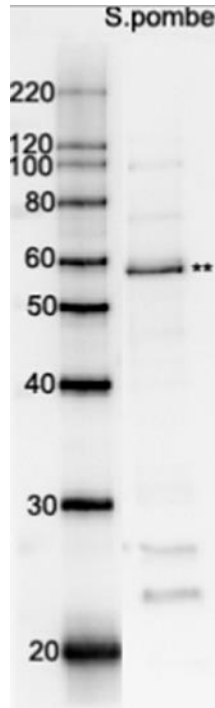


Fig.1 Western blot analysis of Rad22 in the whole cell extracts with affinity-purified antibody.

M: Molecular weight markers (kD)

Lane 1: Protein size markers (kDa)

Lane 2: Extract of wild-type *S. pombe*

** indicates Rad22 protein band.

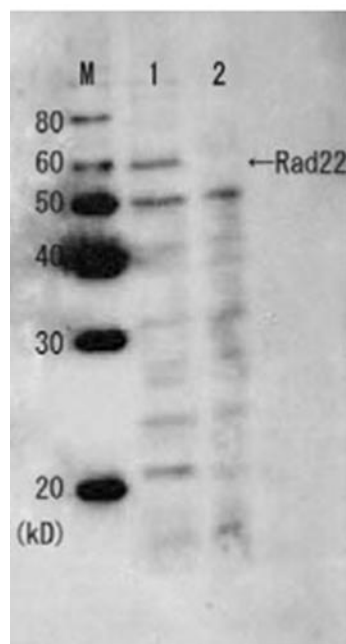


Fig.2. Western blot analysis of Rad22 protein in the whole cell extracts with anti-Rad22 serum before affinity purification.

M: Molecular weight markers (kD)

Lane1: Wild-type strain

Lane2: Rad22 deletion mutant strain

