



**POLYCLONAL ANTIBODY**

*For research use only. Not for clinical diagnosis.*

**Catalog No. BAM-60-051**

# Anti-His 6 tag

## BACKGROUND

Epitope tagging has become a powerful tool for detection and purification of expressed proteins. His6-epitope tag is especially useful because the tagged recombinant proteins can be easily purified by affinity chromatography with metal ion (e.g.Ni<sup>2+</sup>, Co<sup>2+</sup> etc.) conjugated resins. Due to their small size, His epitope tag does not affect the tagged protein's biochemical properties in most cases.

Anti-His epitope tag antibody is useful for identification of a recombinant protein tagged with 6X His at N-terminal, C-terminal and internal of the proteins.

<b>Product type</b>	Primary antibodies
<b>Host</b>	Rabbit
<b>Source</b>	
<b>Form</b>	Liquid Antiserum added with 0.05% sodium azide
<b>Volume Concentration</b>	100 µl
<b>Specificity</b>	This antibody recognizes His6-tagged fusion proteins.
<b>Antigen</b>	GSHHHHHHGGC synthetic peptide cross-linked to KLH with C-terminal Cystein.
<b>Clone</b>	
<b>Isotype</b>	
<b>Cross reactivity</b>	
<b>Storage</b>	Shipped at 4 degrees and stored at -20 degrees or below

---

<b>Application notes</b>	WB, ELISA Not good for immunoprecipitation. Other applications have not been tested. Recommended dilutions Western blotting (dilution: 1/1,000) ELISA (assay dependent)
--------------------------	---

Optimal dilutions/concentrations should be determined by the end user.

<b>References</b>	1) Simpson RJ, Adams PD and Golemis EA " Basic Methods in Protein Purification and Analysis.A laboratory Manual" ColdSpring Harbor Laboratory Press (2009) New York
-------------------	---

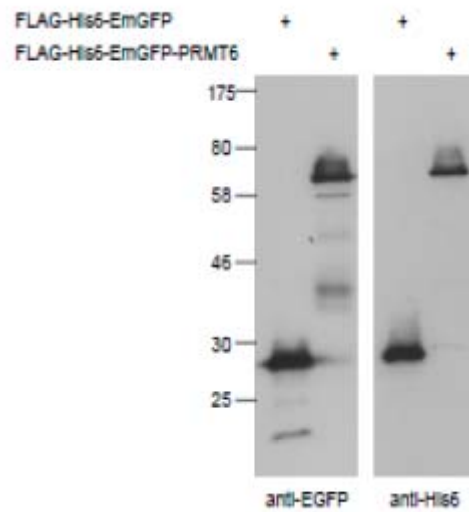


Fig.1 Detection of His-tagged proteins (FLAG-His6-EmGFP, FLAG-His6-EmGFP-PRMT6) in crude extract of 293T cells expressing the recombinant proteins with anti-EGFP antibody (left panel,) and anti-His6 antibody (right panel). The antibodies were used at x 1,000 fold dilution.

*For research use only. Not for clinical diagnosis.*

Manufactured by BioAcademia, Inc.



**COSMO BIO Co., LTD.**

Inspiration for Life Science

TOYO 2CHOME, KOTO-KU, TOKYO, 135-0016, JAPAN

URL: <http://www.cosmobio.co.jp>

e-mail: [export@cosmobio.co.jp](mailto:export@cosmobio.co.jp)

[Outside Japan] Phone : +81-3-5632-9617

[国内連絡先] Phone : +81-3-5632-9610

FAX : +81-3-5632-9618

FAX : +81-3-5632-9619