



***E. coli* RuvC Protein**

***E. coli* RuvC protein** (19 kDa) is a structurally specific endonuclease which binds specifically to the Holliday structure, an intermediate of recombination, at the late stage of homologous recombination and recombination repair and introduces a nick in the symmetrical point of the Holliday junction cleaving and resolving the recombinant (1, 2). Functional form is dimer.

Applications

- 1) Functional studies in vitro. RuvC cleaves recombination intermediate at Holliday Junction.
- 2) SDS-PAGE (0.2 ug/lane)
- 3) Standard antigen for western blotting and ELISA

Product: Full-length recombinant protein expressed in E.coli and highly purified by combined chromatography. RuvC protein purity is over 90% by SDS-PAGE (CBB staining)

Concentration: 1.0 mg/ml (determined by BCA method)

Form: 50% glycerol, 10 mM Tris-HCl (pH7.5), 2 mM EDTA, 100 mM NaCl, 5 mM mercaptoethanol

Size: 20 ug

Storage: Sent at 4°C or at -20°C. Upon arrival, centrifuge briefly and store at -20°C (or -80°C for longer period.)

Data Link UniProtKB/Swiss-Prot [P0A814](#) (RUVC_ECOLI)

References: This product was used in References 2 and 3.

1. Shinagawa H and Iwasaki H (1996) "Processing the holliday junction in homologous recombination." *Trend Biochem Sci* **21**:107-111 PMID: [8882584](#)
2. Iwasaki H *et al* (1991) "Escherichia coli RuvC protein is an endonuclease that resolves the Holliday structure." *EMBO J* **10**:4381-4389 (1991) PMID: [1661673](#)
3. Murayama Y *et al* (2008) "Formation and branch migration of Holliday junctions mediated by eukaryotic recombinases." *Nature* **451**:1018-1021 PMID: [18256600](#)



COSMO BIO Co., LTD.
Inspiration for Life Science

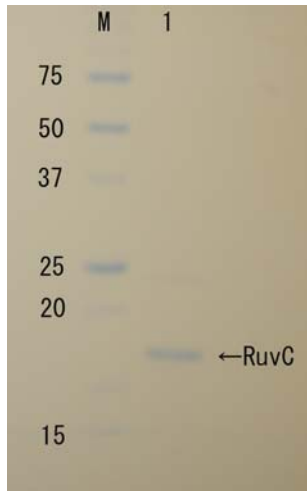


Fig.1 Polyacrylamide gel electrophoresis of RuvC protein.

Related Products:

[01-007EX](#) *E.coli* RuvA protein

[01-011EX](#) *E.coli* RuvC protein

[61-005EX](#) anti-RuvA antibody, rabbit polyclonal

[61-007EX](#) anti-RuvB antibody, rabbit polyclonal

[61-009EX](#) anti-RuvC antibody, rabbit polyclonal

For research use only. Not for clinical diagnosis.

Manufactured by BioAcademia Inc.



COSMO BIO Co., LTD.

Inspiration for Life Science

TOYO 2CHOME, KOTO-KU, TOKYO, 135-0016, JAPAN

URL: <http://www.cosmobio.co.jp>

e-mail: export@cosmobio.co.jp

[Outside Japan] Phone : +81-3-5632-9617

[国内連絡先] Phone : +81-3-5632-9610

FAX : +81-3-5632-9618

FAX : +81-3-5632-9619