

MASSON'S TRICHROME STAIN KIT

KH07007-125/500 mL

DESCRIPTION AND USE

Masson's trichrome stain is used to demonstrate connective tissue elements, collagen and muscle fibers. After staining, collagen and mucin will be coloured in blue, muscle fibers, cytoplasm and keratin in red and the nuclei blue/black.

Designed for research use only, it is not approved for human or animal use, or clinical diagnosis. Depending on the sample type, it is possible that times need to be modified. BQC recommends to perform a test first.

MATERIALS SUPPLIED

Item	Size
Hematoxylin Weigert's Reagent A	125/500 mL
Hematoxylin Weigert's Reagent B	125/500 mL
Fosfotungstic Fosfomolibdic Acid	125/500 mL
Aniline Blue	125/500 mL
1 % Glacial Acetic acid	125/500 mL
Bovin fixative	125/500 mL
Biebrich Scarlet	125/500 mL

STORAGE AND STABILITY

On receipt store kit components at RT. Do not use after the expiration date stated on the packaging.

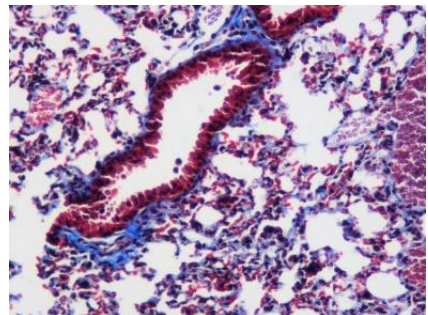
RELATED PRODUCTS

Product	Reference
Iron Stain Kit	KH07014
Mayer's Hematoxylin-Eosin Stain Kit	KH07004
Schiff Reagent Solution	KH07013

SHORT PROCEDURE

0		Deparaffinize sample and hydrate with ddH ₂ O (BQC protocol available)
1	60 min	Place slide in Bovin fixative at 60 °C
2	10 min	Let the slides to cool. Wash with tap water
3		Mix equal parts of Hematoxylin Weigert's Reagents A and B
4	5 min	Place slide inside
5		Wash with tap water
6	15 min	Apply Biebrich Scarlet and do not rinse
7	10-15 min	Apply Fosfotungstic Fosfomolibdic Acid. Do not rinse.
8	5-10 min	Apply Aniline Blue Reagent
9	3-5 min	Apply 1% Glacial Acetic Acid
10		Dehydrate with ethanol (not included), clear and coverslip

STAINING EXAMPLE



Histological Gut section from a C57BL6J wildtype mouse stained with BQC Masson's Trichrome Stain Kit

FOR RESEARCH USE ONLY