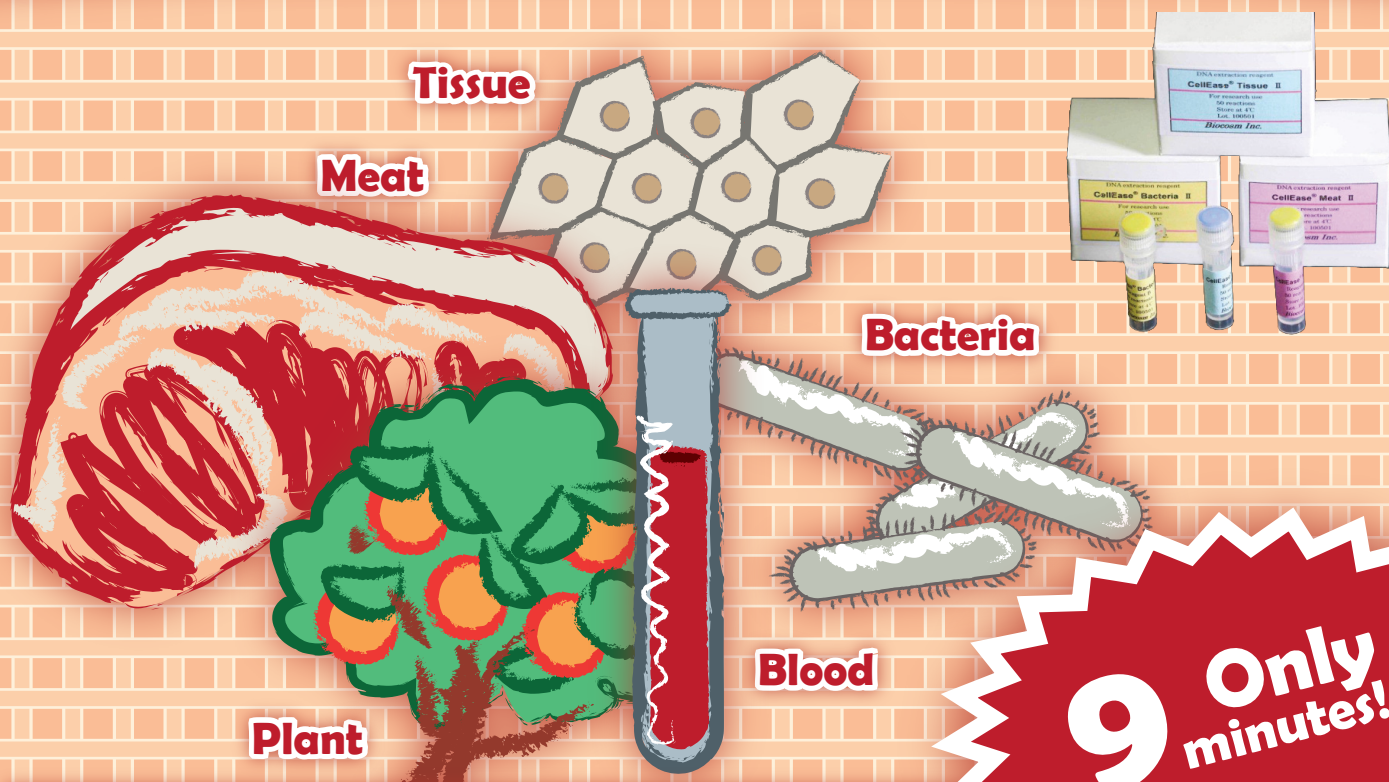
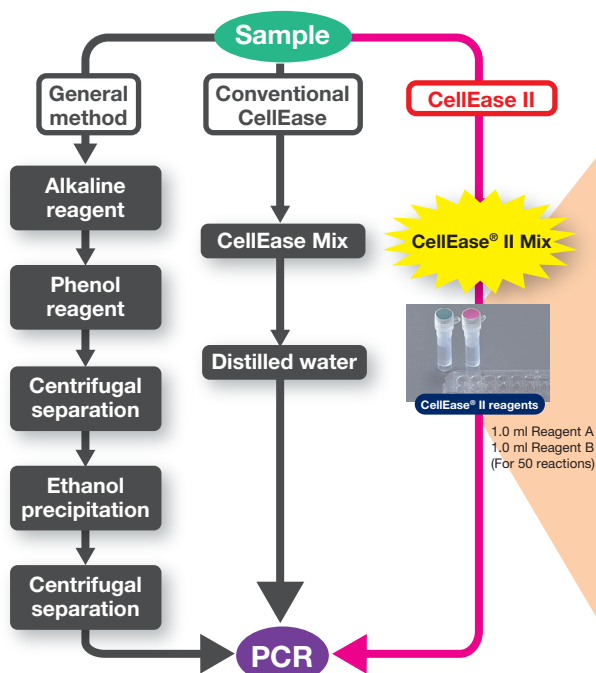


CellEase® II Series

For fast and simple DNA extraction



9 only minutes!



Mix CellEase® mixture and sample

- 100 μ l of CellEase® mixture
Reagent A 20 μ l
Reagent B 20 μ l
Distilled water 60 μ l
- 2~10 mg sample

72°C, 6 min
94°C, 3 min

Incubate at specified temperatures

Use 1~10 μ l of extracted DNA
as a template for PCR
(Total 50 μ l reaction volume)



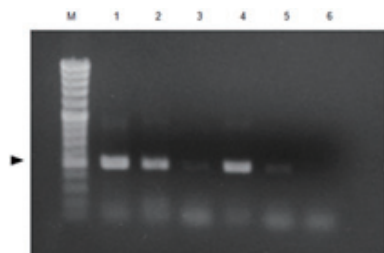
COSMO BIO CO., LTD.

CellEase® II Series

For fast and simple DNA extraction

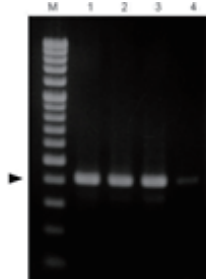
DNA Extraction Examples

DNA extraction from mouse tail



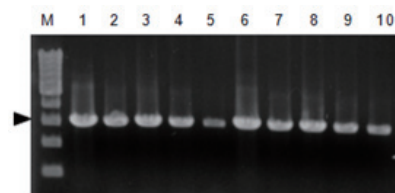
M: Marker (100 bp ladder)
 1: DNA extract by using CellEase® Tissue II conc.
 2: DNA extract by using CellEase® Tissue II conc.x10
 3: DNA extract by using CellEase® Tissue II conc.x100
 4: DNA extract by using conventional CellEase® conc.
 5: DNA extract by using conventional CellEase® conc.x10
 6: DNA extract by using conventional CellEase® conc.x100

DNA extraction from whole blood



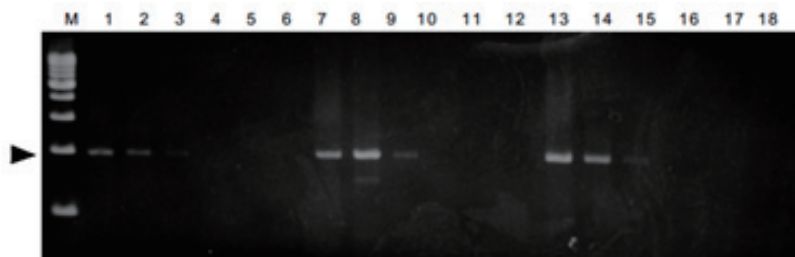
Sample: Whole blood (EDTA)
 M: Marker (100 bp ladder)
 1: CellEase® Blood
 2: CellEase® Blood
 3: CellEase® Blood
 4: Extraction by water

DNA extraction from *Staphylococcus aureus*



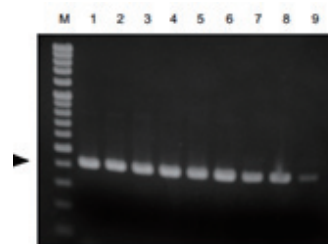
M: Marker (500 bp ladder)
 1: Undiluted Sample Add 5 µl of DNA extract to PCR
 2: x 10 dilution
 3: x 10² dilution
 4: x 10³ dilution
 5: x 10⁴ dilution
 6: Undiluted Sample Add 6 µl of DNA extract to PCR
 7: x 10 dilution
 8: x 10² dilution
 9: x 10³ dilution
 10: x 10⁴ dilution

DNA extraction from tomato leaf



M: Marker (500 bp ladder)
 1: + CellEase®, Without dilution Add 5 µl to PCR
 2: + CellEase®, x10 dilution Add 5 µl to PCR
 3: + CellEase®, x 100 dilution Add 5 µl to PCR
 4: - CellEase®, Without dilution Add 5 µl to PCR
 5: - CellEase®, x10 dilution Add 5 µl to PCR
 6: - CellEase®, x 100 dilution Add 5 µl to PCR
 7: + CellEase®, Without dilution Add 6 µl to PCR
 8: + CellEase®, x10 dilution Add 6 µl to PCR
 9: + CellEase®, x 100dilution Add 6 µl to PCR
 10: - CellEase®, Without dilution Add 6 µl to PCR
 11: - CellEase®,x10 dilution Add 6 µl to PCR
 12: - CellEase®,x 100 dilution Add 6 µl to PCR
 13: + CellEase®, Without dilution Add 7 µl to PCR
 14: + CellEase®, x10 dilution Add 7 µl to PCR
 15: + CellEase®, x 100 dilution Add 7 µl to PCR
 16: - CellEase®, Without dilution Add 7 µl to PCR
 17: - CellEase®, x10 dilution Add 7 µl to PCR
 18: - CellEase®, x 100 dilution Add 7 µl to PCR

DNA extraction from fish (Tuna) samples



M: Marker (100 bp ladder)
 1: Sample 6 mg, Add 5 µl of DNA extract to PCR
 2: Sample 6 mg, Add 6 µl of DNA extract to PCR
 3: Sample 6 mg, Add 7 µl of DNA extract to PCR
 4: Sample 9 mg, Add 5 µl of DNA extract to PCR
 5: Sample 9 mg, Add 6 µl of DNA extract to PCR
 6: Sample 9 mg, Add 7 µl of DNA extract to PCR
 7: Sample 18 mg, Add 5 µl of DNA extract to PCR
 8: Sample 18 mg Add 6 µl of DNA extract to PCR
 9: Sample 18 mg Add 7 µl of DNA extract to PCR

Ordering Information

Product Name	Catalog Number	size	Storage
CellEase® Tissue II	BIC-BCR10-00001	50 Reactions	4°C
CellEase® Bacteria II	BIC-BCR10-00002		
CellEase® Meat II	BIC-BCR10-00003		
CellEase® Blood	BIC-BCR11-00001		
CellEase® Plant	BIC-BCR11-00002		

10124



COSMO BIO CO., LTD.

TOYO EKIMAE BLDG. 2-20, TOYO 2-CHOME,
 KOTO-KU. TOKYO 135-0016, JAPAN
 TEL : (81)3-5632-9617
 FAX : (81)3-5632-9618
 e-mail : export@cosmobio.co.jp
 URL : www.cosmobio.com

