

Leptin ELISA Kits

Plasma leptin is often studied as an index for obesity. These kits utilize a traditional sandwich assay format where leptin in sample is captured by immobilized monoclonal anti-leptin antibody and detected with biotin-labeled anti-leptin antibody. Following the addition of streptavidin-peroxidase and peroxidase substrate OPD, leptin concentration of samples is determined by comparing color values to a leptin standard curve.



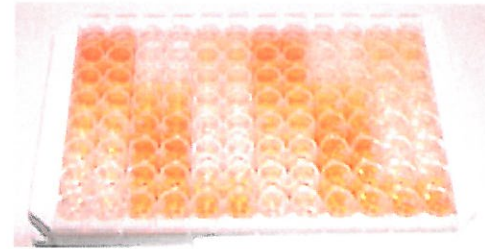
Rat Leptin ELISA Kit

Leptin ELISA Kits

Description	Cat No.	Sample/Volume	Assay Range	Assay Time	Price
Leptin ELISA (rat) Not cross-reactive with rat IL-1 α , IL-1 β , rat TNF- α , human TNF- α , and other cytokines.	YII-YK050-EX	culture supernatant, plasma, serum (20 or 50 μ l)	78.1~20,000 pg/mL	5.5 hr	\$632
High Sensitivity Leptin ELISA (rat)	YII-YK051-EX	plasma, serum (25 μ l)	78.1~2,500 pg/mL	6.5 hr	\$632
Leptin ELISA Kit (mouse)	YII-YK052-EX	serum (25 μ l)	0.313~20 ng/mL	6.5 hr	\$632

Obestatin ELISA Kits

These obestatin ELISA kits utilize a competitive assay format where obestatin in sample inhibits the maximal binding of biotin-labeled obestatin to rabbit anti-mouse obestatin antibody. Obestatin/anti-obestatin complexes are then captured by immobilized anti-Ig, and levels of captured complex are quantitated following addition of streptavidin-peroxidase and peroxidase substrate TMB.



Obestatin ELISA Kits

Description	Cat No.	Sample/Volume	Assay Range	Assay Time	Price
Obestatin EIA Kit (human) Sample pre-treatment not required.	YII-YK231-EX	plasma, serum (20 μ l)	0.412 – 100 ng/ml	18-20 hr	\$800
Obestatin EIA Kit (mouse, rat)	YII-YK230-EX	plasma, serum, brain tissue Extract (25 μ l)	0.082~20 ng/ml	16-18 hr	\$800

Related Antibodies

Description	Reactivity	Cat No.	Size	Application	Price
anti leptin	rat	YII-YC040-EX	50 μ l	IHC	\$632
anti-Obestatin	human	YII-Y461-EX	50 μ l	IHC	\$369
anti Obestatin	mouse/rat	YII-Y460-EX	50 μ l	IHC	\$369
anti Ghrelin	rat	KAL-KR069	25 μ g	IHC(p)	\$516

Excellent Endocrine ELISAs

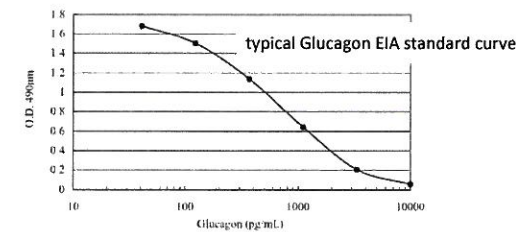
Very smart choices for your endocrine assay needs. Endocrine immunoassays from Cosmo Bio USA are developed and manufactured by the Yanaihara Institute, a Japanese company with a passion and established reputation for producing assays of the highest quality, specificity, sensitivity. USA researchers can rely on Cosmo Bio USA for full technical support, quick delivery, and efficient customer service for all Yanaihara products.

See our website for product manuals and additional details on all products.

Glucagon EIA Kit (pancreatic specific)



The Glucagon EIA Kit utilizes a unique pancreatic glucagon specific antibody (against amino acids 19-29) in a competitive format where glucagon in sample inhibits the binding of biotinylated glucagon to immobilized antibody. Captured glucagon is then quantitated by color reaction upon addition of streptavidin-coupled peroxidase and peroxidase substrate OPD.



Analytical Recovery of Glucagon Standard from Spiked Human Plasma			
Glucagon added (pg/ml)	Observed (pg/ml)	Expected (pg/ml)	Recovery (%)
0	316	-	-
200	536	516	110
500	856	816	108
1,000	1,316	1,316	101
Intra-assay CV	3.3-5.1%		
Inter-assay CV	7.3-18.9%		

Glucagon EIA Kit Info

Description	Cat No.	Sample/Volume	Assay Range	Assay Time	Price
Glucagon EIA, pancreatic specific (rt, ms, hu)	YII-YK090-EX	plasma, urine (100 μ l or 50 μ l)	50 - 10,000 pg/ml	24-72 hr	\$800

Related EIA Kits

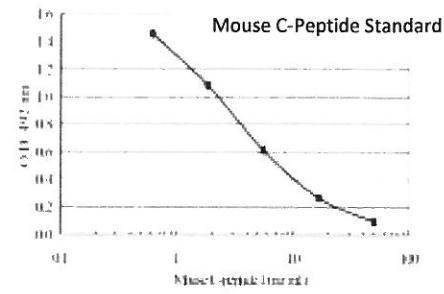
Description	Cat No.	Sample/Volume	Assay Range	Assay Time	Price
Glicentin EIA (rat)	YII-YK111-EX	plasma (30 μ l)	0.206-50 pmol/ml	16-18 hr	\$800
Glucagon-Like Peptide 1 EIA (rat,ms, hu)	YII-YK160-EX	plasma (30 μ l)	0.206~50 ng/ml	16-18 hr	\$800
Glucagon-Like Peptide 2 EIA (rat)	YII-YK140-EX	plasma, urine (25 μ l)	0.137~100 ng/ml	16-18 hr	\$800
Glucagon-Like Peptide 2 EIA (hu)	YII-YK141-EX	plasma (25 μ l)	0.137~100 ng/ml	16-18 hr	\$800
Glucagon-Like Peptide 2 EIA (ms)	YII-YK142-EX	plasma, urine (25 μ l)	0.412~100 ng/ml	16-18 hr	\$800

Related antibodies

Description	Reactivity	Cat No.	Size	Application	Price
anti-Glucagon (total)	hu,rt	YII-YP040-EX	50 μ l	IHC, RIA	\$422
anti GLP-1 (7-36) amide	hu	YII-Y320-EX	50 μ l	IHC, EIA, RIA	\$369
anti GLP-2 (14-33)	rat	YII-Y321-EX	50 μ l	IHC, RIA	\$369
anti GLP-2	rat	YII-Y322-EX	50 μ l	IHC, EIA	\$369
anti GLP-2	ms/rt	YII-Y323-EX	50 μ l	IHC, EIA	\$369
anti Glicentin (1-32)	rt	YII-Y324-EX	50 μ l	IHC, EIA	\$369

C-Peptide EIA Kits

Proinsulin processing results in the equimolar secretion of insulin and C-Peptide into blood. C-peptide therefore reflects serum insulin levels and is an indicator of pancreatic B cell function. These rapid, convenient, and highly specific kits utilize a competitive assay format where C-Peptide in sample inhibits the maximal binding of biotin-labeled C-Peptide to anti-C-Peptide antibody. C-Peptide/anti-C-Peptide complexes are then captured by immobilized anti-Ig, and levels of captured C-Peptide-biotin/rabbit anti-C-Peptide complexes are quantitated following addition of streptavidin-peroxidase and peroxidase substrate OPD.



C-Peptide EIA Kits

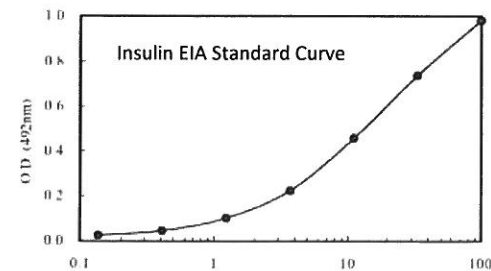
Description	Cat No.	Sample/Volume	Assay Range	Assay Time	Price
C-Peptide (I & II) EIA (mouse) CV(%) Serum: 1.4-3.1 (Intra-assay); 4.2-8.1 (Inter-assay)	YII-YK013-EX	serum, plasma (25 µl)	50 - 10,000 pg/mL	18-20 hr + 1.5 hr	\$800
C-Peptide (I & II) EIA (rat)	YII-YK010-EX	culture supernatant, plasma, serum, urine (50 µl)	1.56 - 50 ng/mL	5.5 hr	\$800
C-peptide I EIA (mouse)	YII-YK011-EX	serum, plasma, urine (25 µl)	0.617 - 50 ng/mL (detection limit 0.206 ng/ml)	16-18 hr + 2.5 hr	\$800
C-Peptide II ELISA (mouse)	YII-YK012-EX	serum, plasma, urine (25 µl)	0.412 - 100 ng/mL	16-18 hr + 2.5 hr	\$800

Related Antibodies

Description	Reactivity	Cat No.	Size	Application	Price
anti C Peptide II	human	YII-Y220-EX	50 µl	EIA, IHC, RIA	\$369
anti C Peptide I	human	YII-Y221-EX	50 µl	IHC, RIA	\$369
anti C-Peptide I	mouse	YII-Y222-EX	50 µl	IHC	\$369
anti C-Peptide II	mouse	YII-Y223-EX	50 µl	IHC	\$369

Insulin EIA Kit

The Insulin EIA kit is highly specific and free of interference from similar substances. Samples may be used without pretreatment. The assay utilizes a traditional sandwich format where insulin in samples is captured by immobilized anti-insulin antibody and detected with a biotin-labeled anti-insulin antibody. Insulin is then quantitated following the addition of streptavidin-peroxidase and peroxidase substrate TMB.



Insulin EIA Kit

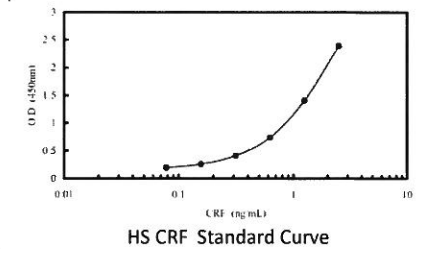
Description	Cat No.	Sample/Volume	Assay Range	Assay Time	Price
Insulin EIA Kit (human, rabbit, dog) CV(%) Human Serum: 6.59-7.10 (intra-assay) 6.86-11.86 (inter-assay)	YII-YK060-EX	serum (25 µl)	0.137~100 ng/ml	16-20 hr	\$527

Related Antibodies

Description	Reactivity	Cat No.	Size	Application(s)	Price
anti-Insulin	human	YII-Y370-EX	50 µl	IHC, EIA	\$369

CRF Family ELISA Kits

The corticotropin-releasing factor (CRF) family of stress-related neuroactive peptides include CRF, urotensin I, sauvagine, urocortin II and urocortin III. Urocortins bind preferentially to CRF type 2 receptors. CRF reduction has been associated with Alzheimers disease, hypoglycemia, hepatitis and other conditions. Urocortins have been most widely studied for their role in stress-induced appetite suppression. The High Sensitivity CRF ELISA employs a traditional sandwich assay format with OPD as peroxidase substrate, while the urocortin ELISAs utilizes a competitive assay format employing biotinylated urocortin and peroxidase substrate OPD.



CRF Family ELISA

Product Name	Cat No.	Sample/Volume	Assay Range	Assay Time	Price
High Sensitivity CRF ELISA (mouse, rat) Does not cross-react with urocortin.	YII-YK131-EX	plasma, brain tissue extract (50 µl)	0.078-2.5 ng/ml	7.5 hr	\$832
Urocortin 2 EIA (mouse)	YII-YK190-EX	plasma, serum (20 µl)	0.82~200 ng/mL	16-18 hr + 3 hr	\$800
Urocortin 2 EIA (rat)	YII-YK191-EX	plasma, serum (50 µl)	1.56~100 ng/mL	16-18 hr + 3 hr	\$800
Urocortin 3 EIA (mouse, rat)	YII-YK200-EX	plasma, serum (25 µl)	0.41~100 ng/mL	16-18 hr + 3 hr	\$800

Related Antibodies

Product Name	Reactivity	Cat No.	Size	Application(s)	Price
Anti CRF (3-41)	hu, ms, rt	YII-Y211-EX	50 µl	IHC(f), IA	\$369
Anti CRF (24-41)	hu	YII-Y210-EX	50 µl	IHC/IA	\$369
Anti Urocortin (3-40)	ms, rt	YII-Y360-EX	50 µl	IHC, IA	\$369
Anti Urocortin	ms/rt	YII-Y361-EX	50 µl	IHC, IA	\$369
Anti Urocortin 1	ms,rt	YII-Y362-EX	50 µl	IHC, IA	\$369
Anti Urocortin 2	ms	YII-Y363-EX	50 µl	IHC, IA	\$369
Anti Urocortin 3	rt	YII-Y364-EX	50 µl	IHC, IA	\$369

PYY ELISA Kits

Peptide YY (PYY) is a gastric peptide hormone that inhibits several gastric functions. Plasma PYY levels decrease after eating. This immunoassay enables the convenient and sensitive quantification of PYY in human plasma, showing essentially no reactivity with the related NPY peptide. In use, PYY in sample inhibits maximal binding of biotin-PYY to PYY antibody which are quantitated in a color reaction using peroxidase substrate OPD.

PYY EIA Kits

Description	Cat No.	Sample/Volume	Assay Range	Assay Time	Price
Rat PYY EIA	YII-YK081-EX	Plasma (25 µl)	0.14~100 ng/mL	16-20 hr + 2.5 hr	\$800
Human PYY EIA	YII-YK080-EX	Plasma (25 µl)	0.14~100 ng/mL	16-20 hr + 2.5 hr	\$800

PYY Related Antibodies

Product Name	Reactivity	Cat No.	Size	Application(s)	Price
Anti PYY	human	YII-Y072-EX	50 µl	IHC (p)	\$369
Anti PYY	porcine	YII-Y070-EX	50 µl	RIA, IHC	\$369
Anti Pancreastatin (33-51)	rat	YII-Y090-EX	50 µl	RIA, IHC	\$369
Anti PP (18-36)	human/rat	YII-Y080-EX	50 µl	RIA, IHC	\$369