

The useful tools for the study of MSR-A in atherogenesis and various other pathological conditions.

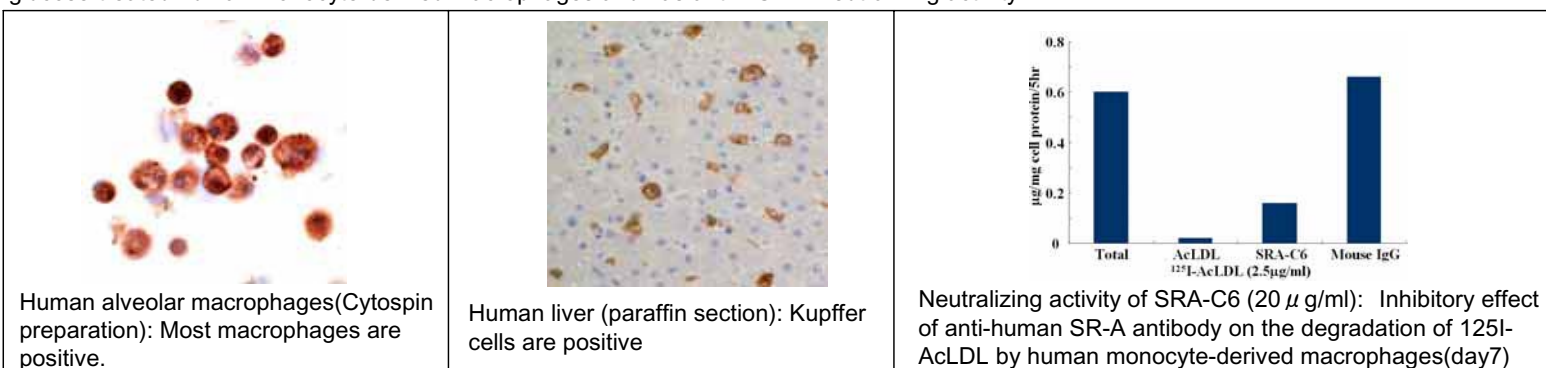
Anti Human Macrophage Scavenger Receptor A

(MSR-A:CD204) Monoclonal Antibody

(Clone No.: SRA-C6)

Class A macrophage scavenger receptor (MSR-A: CD204) was identified in the search for the receptor molecules that are implicated in the pathological deposition of cholesterol during atherogenesis through receptor-mediated uptake of modified low density lipoprotein (LDL). MSR-A possesses a wide range of ligand-binding specificities and recognize a variety of molecules such as modified LDL including acetylated LDL, oxidized LDL, advanced glycation end products (AGEs), polyribonucleotides such as poly G and poly I and bacterial surface lipids including lipopolysaccharide and lipoteicoic acid.

This antibody was produced from the mouse immunized with recombinant protein of human type I MSR-A, and has been proved to be useful for the western blotting and immunohistochemistry. This antibody also inhibits the endocytic degradation of acetylated LDL and oxidized LDL by high glucose-treated human monocyte-derived macrophages and has anti MSR-A neutralizing activity.



Takeya M, Department of Cell Pathology, Graduate School of Medical Sciences, Kumamoto University, Kumamoto, Japan

Code	Host	Clone	Application	Size
KAL-KT118	Mouse	SRA-C6	IHC, WB	50ug
KAL-KT118-S	Mouse	SRA-C6	IHC, WB	50ug

* KAL-KT118-S is "additive-free".

New!

Macrophage related Antibody

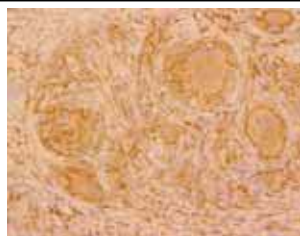


COSMO BIO Co., LTD.
Inspiration for Life Science

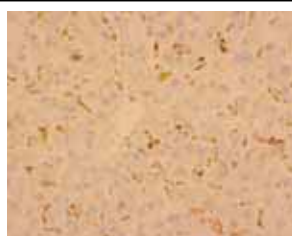
Anti Human Macrophage Scavenger Receptor A

(MSR-A:CD204) Monoclonal Antibody

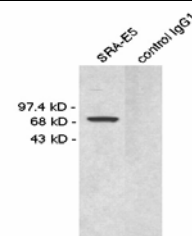
(Clone No.: SRA-E5)



Skin Sarcoidosis (paraffin section)
Epithelioid cells and multi-nucleated giant cells in granulomas and surrounding macrophages are positive.
Takeya M., Second Department of Pathology, Kumamoto University School of Medicine, Kumamoto, Japan



Human liver (paraffin section)
Kupffer cells are positively stained.



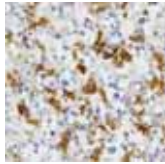
Western blotting
A single band at 72kD is observed. DTT treated.
(sample : lysate of THP-1 cells, a human histiocytic cell line)

Code	Host	Clone	Application	Size
KAL-KT022	Mouse	SRA-E5	IHC, WB	50ug

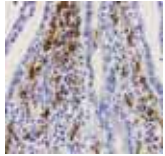
IHC: Immunohistochemistry WB: Westernblotting FCM: Flow Cytometry IP: Immunoprecipitation IC: Immnocytochemistry

Macrophage related Antibody

Anti Human Macrophage Surface Antigen Monoclonal Antibody



Human spleen (frozen section): Red pulp macrophages are positive.



Small Intestine of Guinea Pig (paraffin section): Macrophages in lamina propria are positive.

Macrophages are present in nearly all tissues and organs of the body. They are differentiated from monocytes derived from the bone marrow. Macrophages and monocytes are phagocytes, acting in both innate immunity and cell-mediated immunity of vertebrate animals. Their function is to phagocytize cellular debris and pathogens, and to stimulate lymphocytes and other immune cells to respond to the pathogen.

Macrophages are able to be identified immunohistochemically by virtue of the presence of monocyte/macrophage-associated antigens such as CD68. Antibodies recognizing CD68 have been used as some of the best reagents to detect macrophages in tissues.

CD68 is a 110-kD transmembrane glycoprotein that is highly expressed by human monocytes and tissue macrophages. It is a member of the lysosomal/endosomal-associated membrane glycoprotein (LAMP) family.

This antibody recognizes CD68 antigen. The molecular size of the antigen identified by this antibody was 110 kDa. Immunoprecipitated antigen by this antibody was also recognized by the other CD68 antibodies such as KP-1 and PG-M1.

In immunohistochemical assays, this antibody recognizes freshly isolated human blood monocytes and tissue macrophages. This antibody also recognizes macrophages obtained from guinea pigs, pigs, bovine species, and monkeys. Since this antibody strongly labels guinea pig macrophages, this antibody will be suitable to examine such macrophages in experimental guinea pig models.

This antibody will be very useful to research of CD68, macrophage, allergic diseases and delayed hypersensitivity.

Takeya M.,
Department of Cell Pathology, Graduate School of Medical Sciences,
Kumamoto University, Kumamoto, Japan

Code	Host	Clone	Application	Size
KAL-KT117	Mouse	PM-1K	IHC	50ug

Anti Human Macrophage Surface Antigen Monoclonal Antibody



Human lymph node (paraffin section)

Macrophages in marginal sinus are positively stained.

This antibody **AM-3K** reacts intensely with most of macrophages in lymphoreticular organs and in many other organs and tissues. AM-3K also reacts with the macrophages in many pathological conditions. However, this antibody does not react with dendritic cell population, such as epidermal Langerhans cells, interdigitating cells in the paracortex of lymph nodes, nor follicular dendritic cells.

This antibody also reacts monkey, horse, cow etc..

Takeya M., Second Department of Pathology,
Kumamoto University School of Medicine, Kumamoto, Japan

Code	Host	Clone	Application	Size
KAL-KT013	Mouse	AM-3K	IHC	50ug

Anti Rat Macrophage / Dendritic Cells Monoclonal Antibody



Rat spleen (frozen section)

Macrophages in red pulp and white pulp were positively stained.

This antibody **RM-4** is very useful for not only in discriminating macrophage/dendritic cells from various cell populations but also in identifying endosomes and lysosomes.

Takeya M., Second Department of Pathology,
Kumamoto University School of Medicine, Kumamoto, Japan

Code	Host	Clone	Application	Size
KAL-KT014	Mouse	RM-4	IHC	50ug

Anti Rabbit Macrophage / Monocyte Monoclonal Antibody



Rabbit Liver (frozen section): Kupffer cells are positively stained.

This anti-rabbit macrophage monoclonal antibody, RbM2, was produced by using thioglycate-elicited rabbit peritoneal macrophages as immunogen.

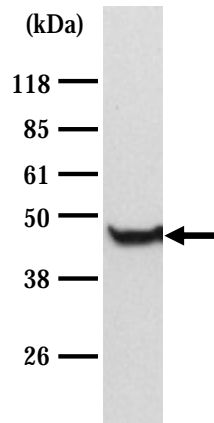
The antigen recognized by RbM2 is a lysosomal membrane protein with 50,000 molecular weight.

Thus, this antibody is very useful for not only in discriminating monocyte / macrophages from various cell populations but also in identifying lysosomes and their related structures in macrophages.

Takeya M., Second Department of Pathology,
Kumamoto University School of Medicine, Kumamoto, Japan

Code	Host	Clone	Application	Size
KAL-KT015	Mouse	RbM2	IHC	50ug

Anti CapG (macrophage-capping protein) Polyclonal Antibody



Western blotting

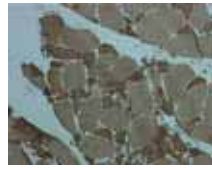
Sample : Human fibroblast extract

Dr. Yutsudo, M
At Research Institute for Microbial Diseases,
Osaka University Japan

Code	Host	Clone	Application	Size
KAL-KR089	Rabbit	-	WB	25ug

Inflammation Antibody

Anti Human Chemokine-like factor 1 Polyclonal Antibody



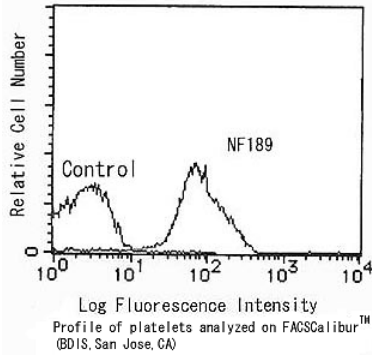
Sample :
biopsied muscle of a patient with multiple myositis

Chemokine is a member of cytokines (interleukin, interferon etc.) and is known to activate chemokinesis of leukocytes. Chemokine-like factor 1 (CKLF1) is a novel chemokine and expressed on various types of tissue.

Drs. Kobayashi S. and Nagai A. at Department of Internal Medicine III, Shimane Medical University

Code	Host	Clone	Application	Size
KAL-KR072	Rabbit	-	IHC	25ug

Anti Human CD36 Monoclonal Antibody



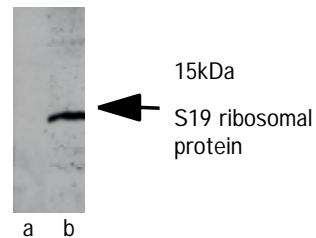
CD36 is single-strand glycoprotein with molecular weight of 88kDa, and is known to limited versatility receptor.

This antibody has been proved to be useful for flow cytometry with high affinity.

Code	Host	Clone	Application	Size
KAL-KS017	Mouse	NF189	FCM	50ug

Anti S19 Ribosomal Protein Polyclonal Antibody

Detecting S19 protein in HepG2 Cell Homogenate



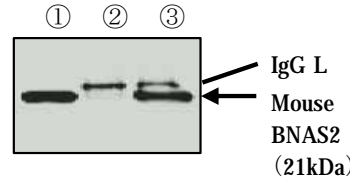
S19 Ribosomal protein consists of 145 amino acids with a predicted molecular weight of 16 kD. The cross-linked homo-dimer from apoptosis cells has been proved to exhibit the monocyte chemotactic activity. Also it is related with rheumatoid arthritis.

This antibody was purified from the serum of the rabbit immunized with S19 recombinant protein, and has been proved to be useful for the immunoblotting.

a: Non immuned rabbit antibody
b: Anti S19 ribosomal protein antibody

Code	Host	Clone	Application	Size
KAL-KY008	Rabbit	-	ELISA,WB	100ug

Anti Mouse BNAS2 (BASH N terminus associated protein 2) Polyclonal Antibody



Imamura Y, Kitamura D
Division of Molecular Biology,
Research Institute for Biological Science,
Tokyo University of Science

Western blotting (After Immunoprecipitation)

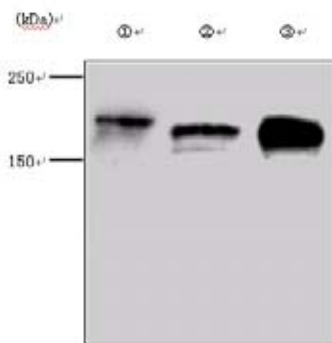
Sample :

Extracts from COS7 cells transfected with expression vectors for T7-tagged mouse BNAS2

- ① Extracts
- ② Extracts immunoprecipitated with rabbit IgG
- ③ Extracts immunoprecipitated with mouseBNAS2 Ab

Code	Host	Clone	Application	Size
KAL-KR093	Rabbit	-	WB,IP,IC	25ug

Anti Mouse CIBZ Polyclonal Antibody



Western blotting

Sample :

- ① Myc-CIBZ protein
- ② mouse brain lysate
- ③ mouse kidney lysate

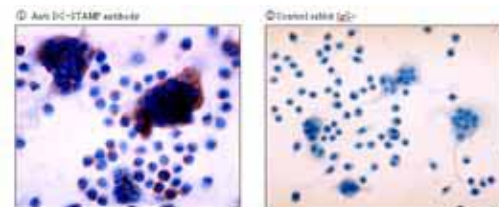
Dr. Kawaichi M. at Division of Gene Function in Animals, Graduate School of Biological Sciences, Nara Institute of Science and Technology

Code	Host	Clone	Application	Size
KAL-KR103	Rabbit	-	WB	100ug

Anti Mouse DC-STAMP Polyclonal Antibody

DC-STAMP(FIND) :

Dendritic Cell-Specific Transmembrane Protein (IL-Four Induced)



Immunohistochemistry

Sample : RAW-D cells stimulated with RANKL+TNF- α

- ① Anti DC-STAMP antibody
- ② Control rabbit IgG

Dr. Nomiya H. at Department of Molecular Enzymology, Kumamoto University Graduate school of Medical Sciences

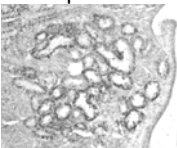
Code	Host	Clone	Application	Size
KAL-KR104	Rabbit	-	IHC	25ug



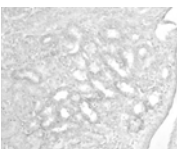
Featured Antibody

Anti Rabbit POEM/nephronectin Polyclonal Antibody

Sample : Mouse Kidney



Anti POEM/nephronectin Antibody



control (Rabbit IgG)

POEM (Pre osteoblastic EGF repeat protein with MAM domain)/nephronectin is a novel ligand for $\alpha 8 \beta 1$ integrin. Its mRNA and protein is widely expressed in developing embryo, such as kidney, bone, muscles and endocrine organs except uriniferous tubule after childbirth. POEM/nephronectin estimated to encode a 60k dalton protein which has several functional domains, such as a signal sequence, five EGF-like repeated sequences, a proline-rich domain, a RGD cell binding motif and a MAM domain. POEM/nephronectin protein is firmly bound to the cell surface after its secretion and not observed in culture medium. Recent research results indicate that not only the MAM domain but also the RGD cell binding motif in POEM/nephronectin protein plays an important role in cell adhesion, spreading, and survival.

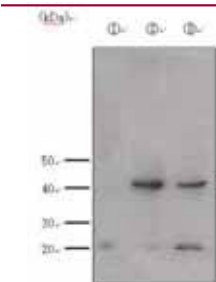
This antibody was established from the purified serum immunized with a short peptide of mouse POEM/nephronectin. It is useful for immunohistochemical detection of POEM/nephronectin.

Preparation of antibodies and instruction :

Drs. Tezuka K. at Department of Tissue and Organ Development, Regeneration and Advanced Medical Science, Gifu University Graduate School of Medicine

Code	Host	Clone	Application	Size
KAL-KR052	Rabbit	-	IHC	50ug

Anti Mouse Indoleamine-pyrrole 2,3 dioxygenase (IDO) Polyclonal Antibody



Sample : CMT-93 mouse rectum-derived cell lysate

- ① Additive nothing
- ② Interferon-gamma (+)
- ③ Interferon-gamma (+), dbcAMP(+)

Preparation of antibodies and instruction :
Dr. Minatogawa Y. at Department of Biochemistry, Kawasaki Medical School

Code	Host	Clone	Application	Size
KAL-KR101	Rabbit	-	WB	150ug

Anti Matrix Gla Protein Polyclonal Antibody (Gla: gamma-carboxyglutamic acid)



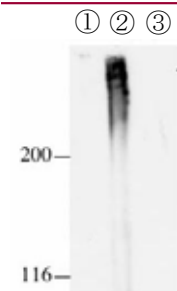
Sample : Mouse Limb (Embryo 14 days)
(Calcification site and its around mature hypertrophic chondrocyte are positively stained.)

Preparation of antibodies and instruction

Dr. Mano H. and Dr. Nakatani S. at Department of Clinical Dietetics and Human Nutrition, Faculty of Pharmaceutical Sciences, Josai University

Code	Host	Clone	Application	Size
KAL-KR083	Rabbit	-	IHC	50ug

Anti Rat Cubilin Polyclonal Antibody



Sample : 200 μ g /lane
1) Rat heart lysate (Negative Control)
2) Rat kidney lysate
3) Rat liver lysate (Negative Control)

Preparation of antibodies and instruction
Dr. Akihiko Saito at Department of Applied Molecular Medicine,
Dr. Fumitake Gejyo at Biological Functions and Medical Control Homeostatic Regulation and Development, Niigata University Graduate School of Medical and Dental Sciences

Endocytic receptors Cubilin and Megalin are colocalized in the renal proximal tubule. Among the ligands are vitamin transcobalamin(TC)-B12, vitamin D-binding protein(DBP), albumin, apolipoprotein(apoA- I) etc. From the fact renal failure is accompanied by the dysfunction of Cubilin, Cubilin is expected to involve the disease development of kidney.

This antibody was established from the purified serum of rabbits immunized with partial peptide of rat Cubilin. This antibody is useful for Western blotting.

Code	Host	Clone	Application	Size
KAL-KR065	Rabbit	-	WB	25ug

- All Cosmo Bio products are for research use only, not for use as a diagnostic. -

Distributor



COSMO BIO CO., LTD.

Inspiration for Life Science

TOYO 2CHOME, KOTO-KU, TOKYO, 135-0016, JAPAN

<http://www.cosmobio.co.jp>

e-mail : export@cosmobio.co.jp

Phone : +81-3-5632-9617

FAX : +81-3-5632-9618

Macrophage related Antibody

Product Name	Cat#	Clone	Quantity	Price
Anti Human Macrophage Scavenger Receptor A (MSR-A:CD204) Monoclonal Antibody	KAL-KT118	SRA-C6	50ug	¥55000 \$524 €424
	KAL-KT118-S	SRA-C6	50ug	¥55000 \$524 €424
	KAL-KT022	SRA-E5	50ug	¥55000 \$524 €424
Macrophage related Antibody	KAL-KT117	PM-1K	50ug	¥55000 \$524 €424
	KAL-KT013	AM-3K	50ug	¥49000 \$467 €377
	KAL-KT014	RM-4	50ug	¥49000 \$467 €377
	KAL-KT015	RbM2	50ug	¥49000 \$467 €377
	KAL-KR089	-	25ug	¥49000 \$467 €377
	KAL-KS017	NF189	50ug	¥30000 \$286 €231
Inflamation Antibody	KAL-KR072	-	25ug	¥49000 \$467 €377
	KAL-KY008	-	100ug	¥45000 \$429 €347
	KAL-KR093	-	25ug	¥49000 \$467 €377
	KAL-KR103	-	100ug	¥49000 \$467 €377
	KAL-KR104	-	25ug	¥49000 \$467 €377
Featured Antibody	KAL-KR052	-	50ug	¥49000 \$467 €377
	KAL-KR101	-	150ug	¥49000 \$467 €377
	KAL-KR083	-	50ug	¥49000 \$467 €377
	KAL-KR065	-	25ug	¥49000 \$467 €377



COSMO BIO Co., LTD.
Inspiration for Life Science

TOYO EKIMAE BLDG, 2-20, TOYO 2CHOME, KOTO-KU, TOKYO 135-0016, JAPAN

TEL: +81-3-5632-9617 FAX: +81-3-5632-9618 e-mail: export@cosmobio.co.jp

www.cosmobio.co.jp