



**NSE**

**Human, Recombinant, *E. coli***

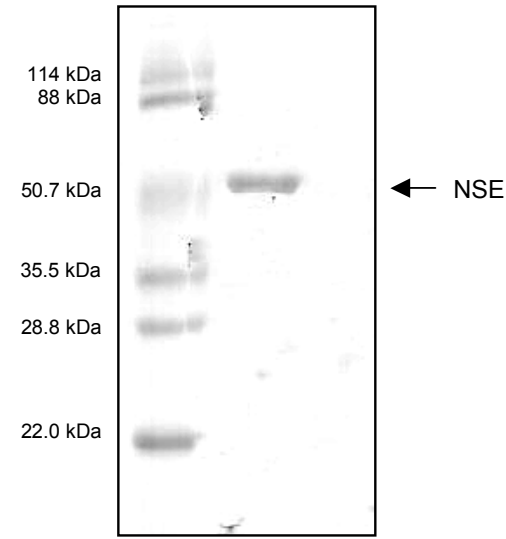
**Cat. No.:** RCP9279                      **Size:** 10µg  
RCP9280                                      100µg  
RCP9126                                      1000µg

**Synonym:** Neuronal specific enolase; EC. 4.2.1.11; 2-phospho-D-glycerate hydrolyase; enolase 2 (gamma neuronal); neuron specific enolase; neural enolase; enolase 2

**Description:** NSE is the  $\gamma\gamma$  isoform of the glycolytic enzyme enolase and is expressed primarily in neurons, in normal and neoplastic neuroendocrine cells . NSE is a highly soluble cytoplasmic protein that is readily secreted into the CSF and serum following tissue damage. NSE shows neurotrophic and neuroprotective properties on a broad spectrum of central nervous system (CNS) neurons and binds in a calcium-dependent manner to cultured neocortical neurons promoting cell survival.

**RANDOX** recombinant NSE comprises a 433 amino acid fragment (2-434) corresponding to processed mature NSE protein and is expressed in *E. coli* with an amino-terminal hexahistidine tag. This product is for research use only and is not intended for diagnostic or therapeutic use.

**Form:** Liquid  
**Purity:** >95% by SDS-PAGE



**Enzyme Activity:** Not determined.

**References:** Kaiser, E. *et al.*,(1989) *Clin. Chim. Acta.* **183 (1)** :13-3