

L-Selectin

Human, Recombinant, *E. coli*

Cat. No.:	RCP9252	Size:	10µg
	RCP9253		100µg
	RCP9117		1000µg

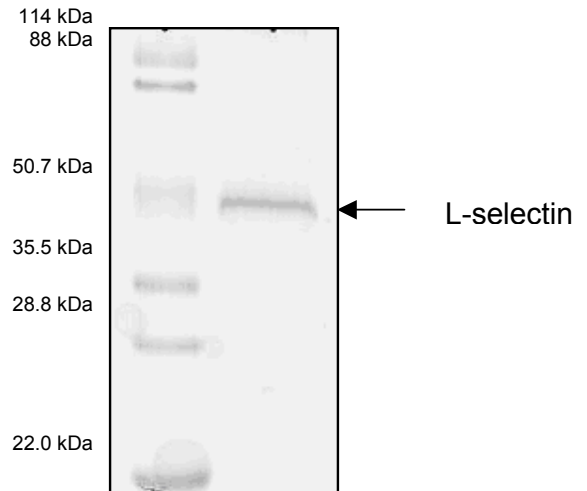
Synonym: Leukocyte Selectin, L-SEL, Leukocyte adhesion molecule LAM-1, Leukocyte cell adhesion molecule LECAM-1, TQ1, CD62L, Leukocyte surface antigen Leu-8, DREG, lymph node homing receptor LNHR, MEL-14.

Description: L-Selectin belongs to a family of divalent cation-dependent carbohydrate-binding glycoproteins or adhesion molecules. L-Selectin is expressed constitutively on lymphocytes, monocytes and granulocytes and interacts specifically with carbohydrate groups on activated endothelial cells. L-Selectin may be shed by proteolytic cleavage and circulating levels in biological fluids may be used as an indicator of various pathological conditions.

RANDOX recombinant human L-selectin comprises a 294 amino acid fragment (39-332) corresponding to the mature L-Selectin extracellular domain and is expressed in *E. coli* with an amino-terminal hexahistidine tag. This product is for research use only and is not intended for diagnostic or therapeutic use.

Form: Liquid

Purity: >95% by SDS-PAGE



References: Tedder, T.F *et al.* (1990) *J. Immunol.* **144** (2): 532-540.
Schleiffenbaum, B. *et al.* (1992) *J. Cell Biol.* **119** (1): 229-238.